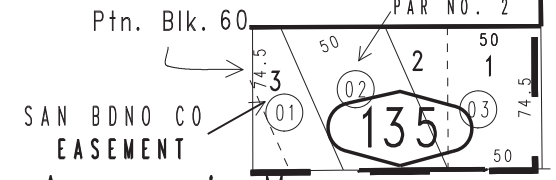
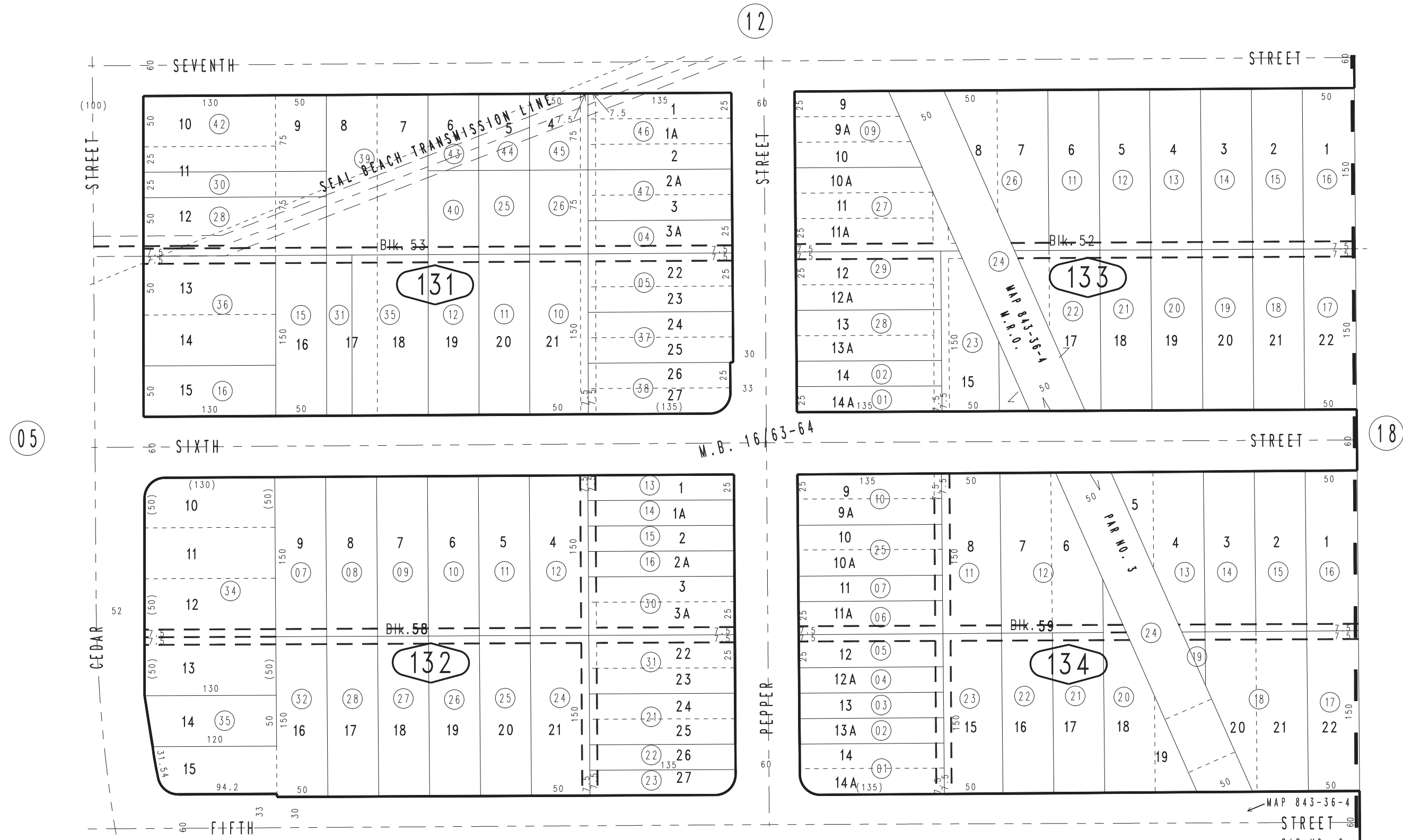


THIS MAP IS FOR THE PURPOSE OF AD VALOREM TAXATION ONLY.

Ptn. Town of Crestmore M.B. 16/63-64

Colton Joint Unified 0259-13
Tax Rate Area
64040



Ptn. N.W.1/4, Sec. 34
T.1S., R.5W.

Assessor's Map
Book 0259 Page 13
San Bernardino County