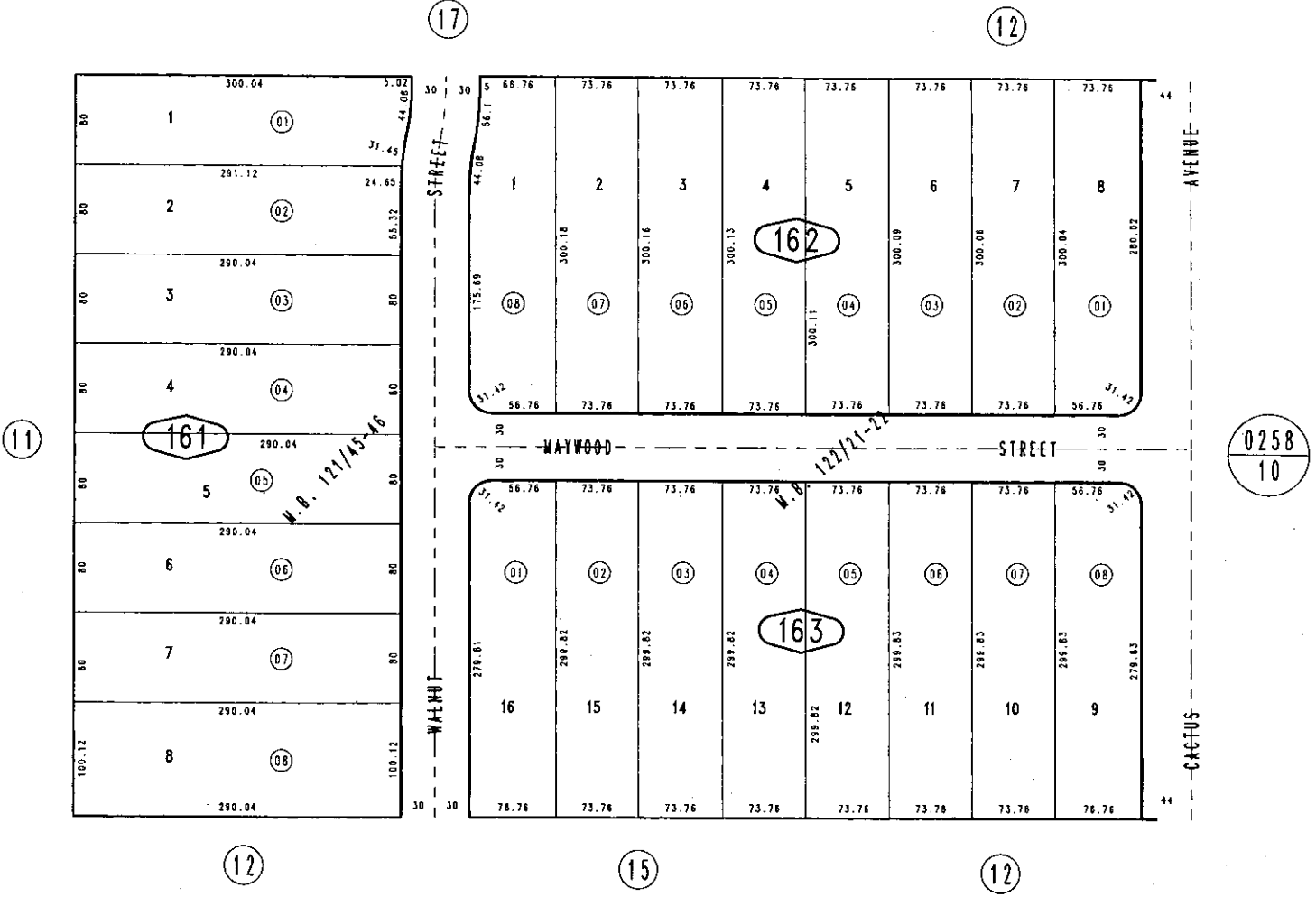
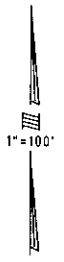


THIS MAP IS FOR THE PURPOSE OF AD VALOREM TAXATION ONLY.

Tract No. 8833, M.B. 121/45-46

Colton Joint Unified Tax Rate Area 0257-16 64027



September 2003

Tract No. 8817, M.B. 122/21-22

Assessor's Map Book 0257 Page 16 San Bernardino County

REVISED