

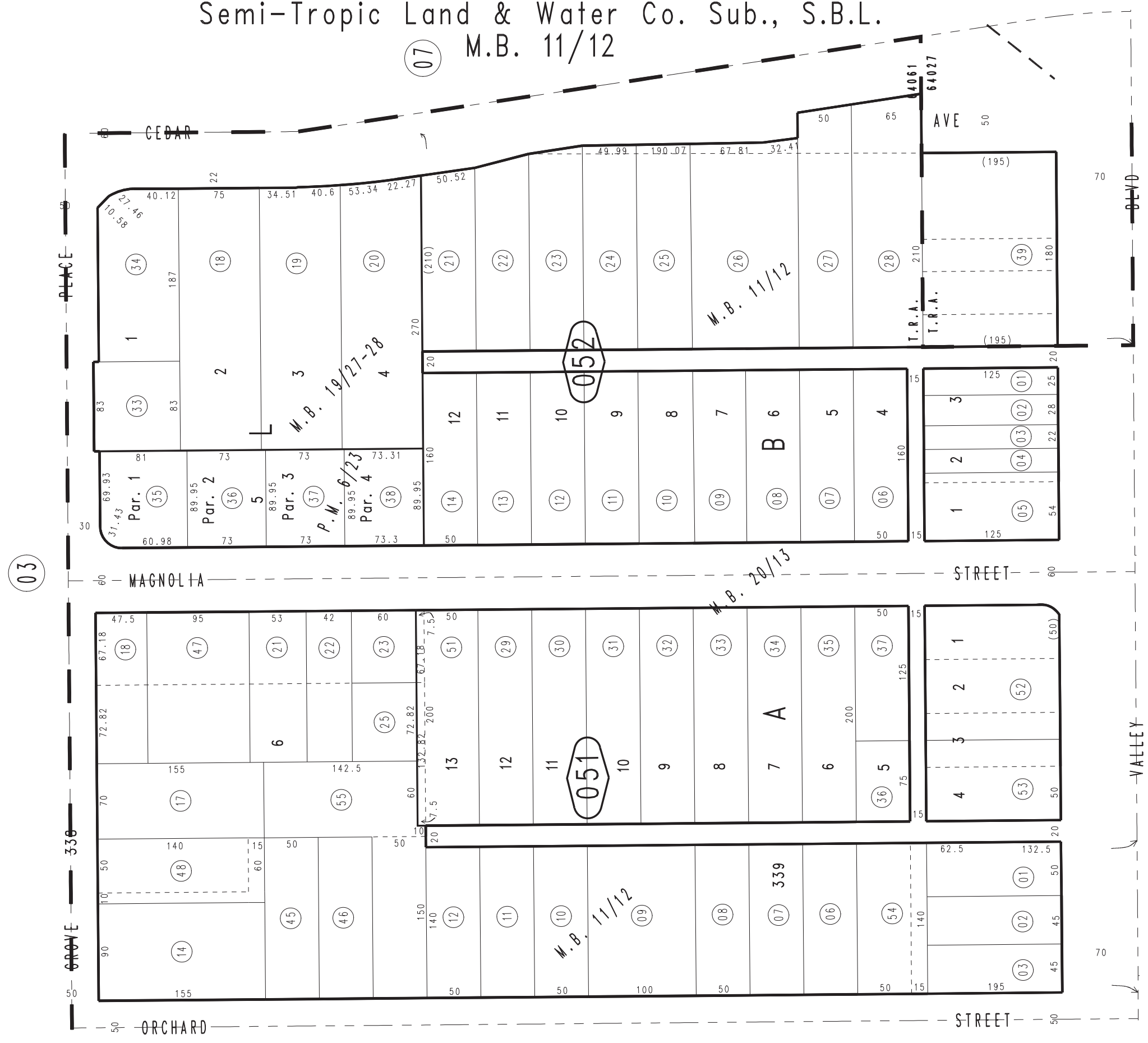
THIS MAP IS FOR THE PURPOSE OF AD VALOREM TAXATION ONLY.



# Semi-Tropic Land & Water Co. Sub., S.B.L.

07 M.B. 11/12

0253-05



Colton Joint Unified Tax Rate Area 64027,64061

Parcel Map No. 610, P.M. 6/23

W.P. Martin Sub., M.B. 20/13

Ptn. Bloomington Villa Lots & Ptn. Re-Sub. Townsite of Bloomington. M.B. 19/27-28

04

Assessor's Map Book 0253 Page 05 San Bernardino County

REVISED 11/13/21 RU 02/24/22 RU 12/09/22 KA