

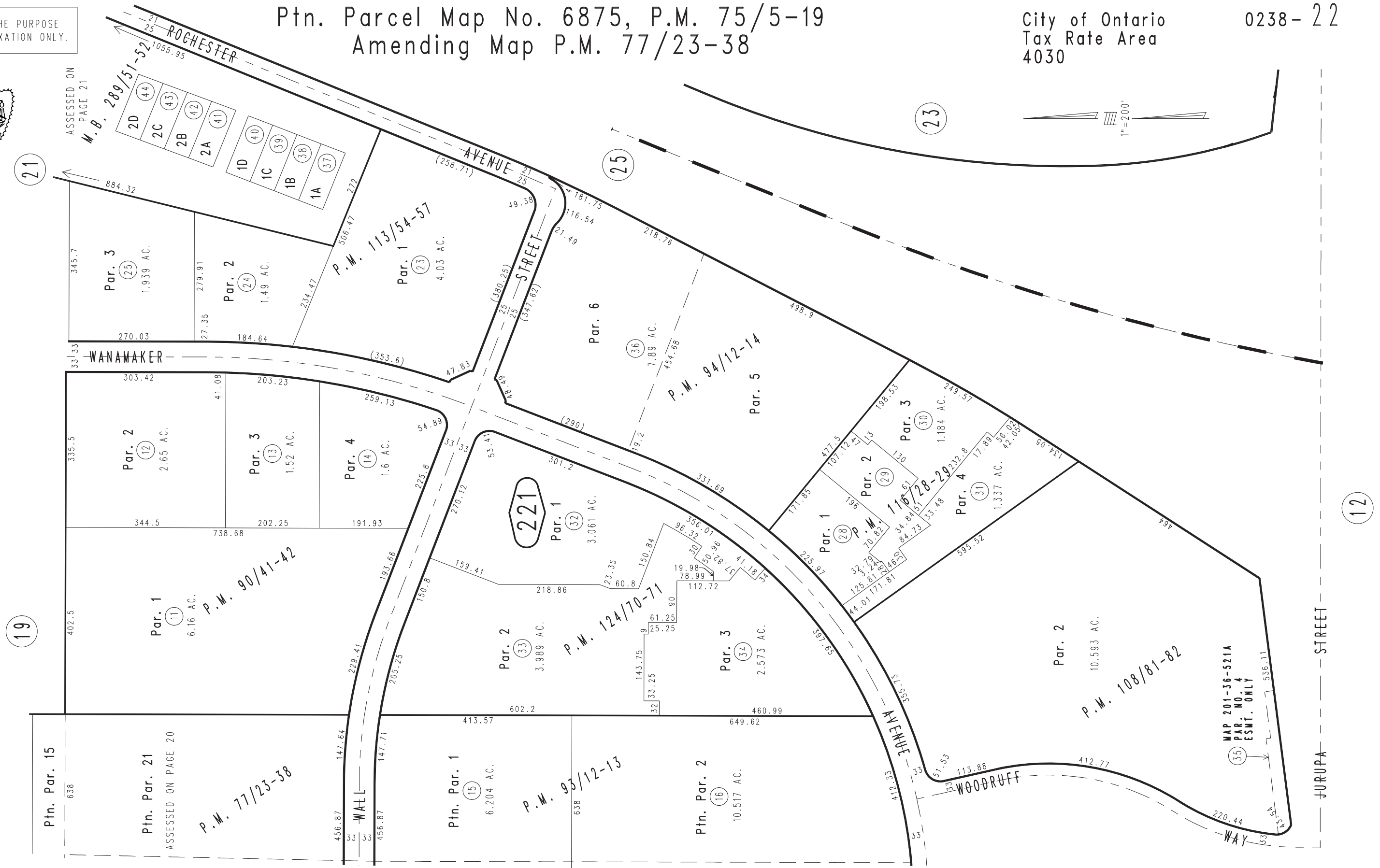
THIS MAP IS FOR THE PURPOSE OF AD VALOREM TAXATION ONLY.



# Ptn. Parcel Map No. 6875, P.M. 75/5-19 Amending Map P.M. 77/23-38

City of Ontario  
Tax Rate Area  
4030

0238-22



Ptn. Parcel Map No. 8938, P.M. 94/12-14  
 Ptn. Parcel Map No. 8801, P.M. 93/12-13  
 Parcel Map No. 8351, P.M. 90/41-42  
 Ptn. Parcel Map No. 9553, P.M. 113/54-57

Parcel Map No. 9474, P.M. 124/70-71  
 Parcel Map No. 10089, P.M. 116/28-29  
 Ptn. Parcel Map No. 9752, P.M. 108/81-82  
 Ptn. Tract No. 16040, M.B. 289/51-52,  
 Condominium Plan 2002-646328

Ptn. S.1/2, Sec.30  
 T.1S.,R.6W.

Assessor's Map  
 Book 0238 Page 22  
 San Bernardino County