

THIS MAP IS FOR THE PURPOSE
OF AD VALOREM TAXATION ONLY.

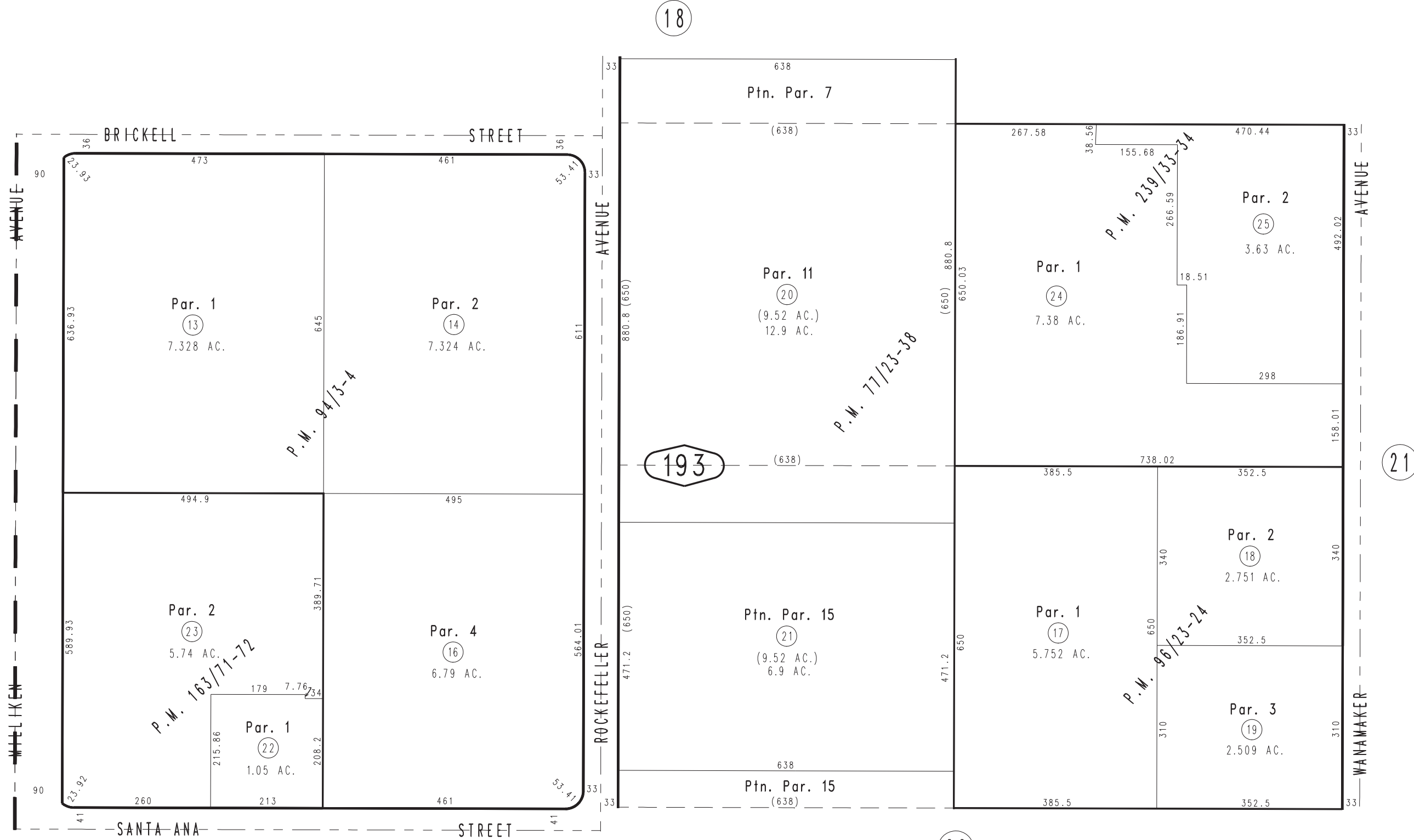
Ptn. Parcel Map No. 6875, P.M. 75/5-19 Amending Map P.M. 77/23-38

City of Ontario
Tax Rate Area
4030

0238-19



0211
22



20

22

Parcel Map No. 19235, P.M. 239/33-34
 Parcel Map No. 13840, P.M. 163/71-72
 Parcel Map No. 8538, P.M. 96/23-24
 Ptn. Parcel Map No. 8848, P.M. 94/3-4

Ptn. N.W.1/4, Sec.30
 T.1S.,R.6W.

Assessor's Map
 Book 0238 Page 19
 San Bernardino County

REVISED
 11/29/11 RU