

THIS MAP IS FOR THE PURPOSE OF AD VALOREM TAXATION ONLY.



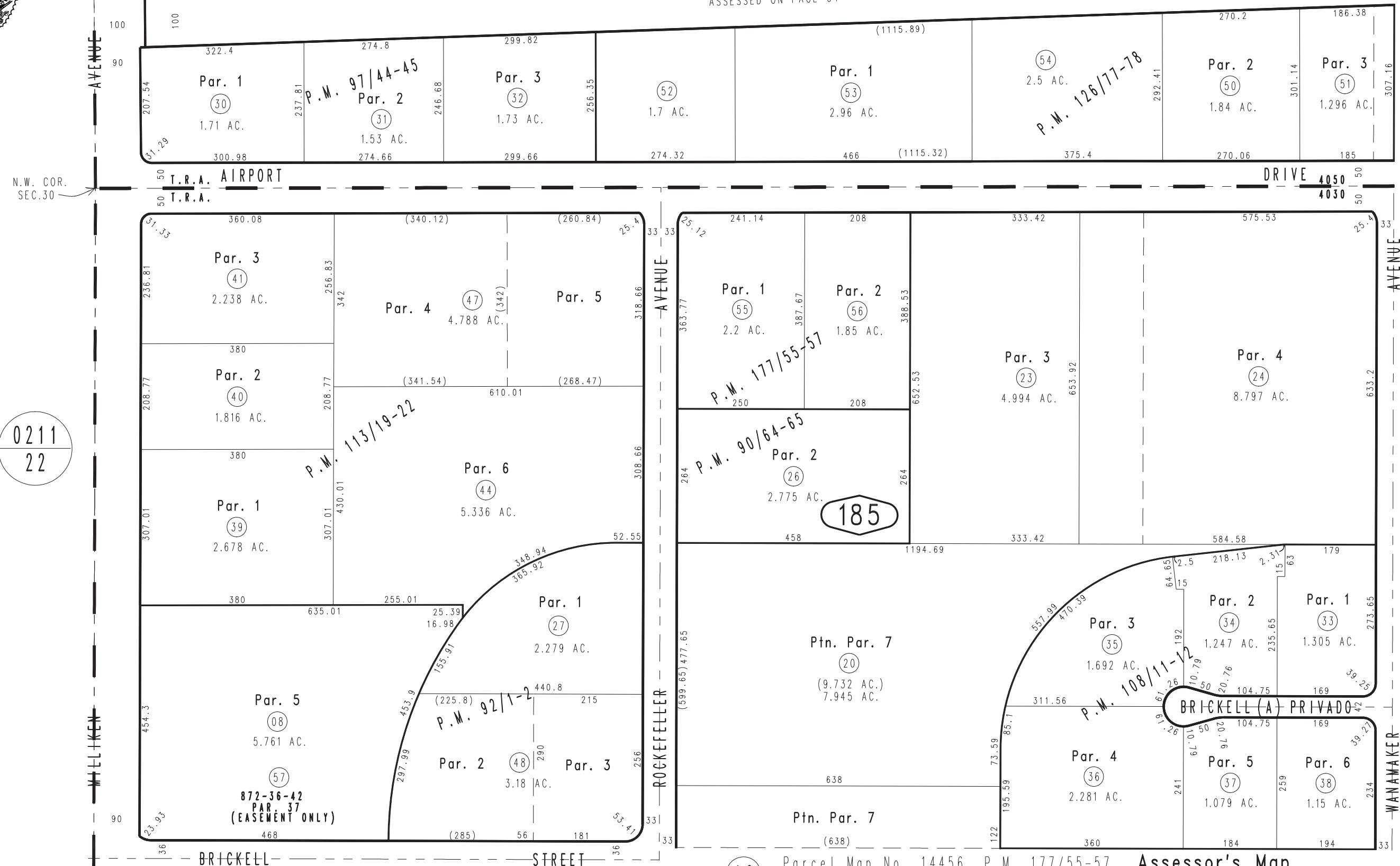
Ptn. Parcel Map No. 3837, P.M. 34/72

City of Ontario Tax Rate Area 4050 4030 0238-18

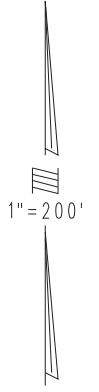
04

MAP 872-36-4J PTN. PAR. NO. 25

S.P.R.R. ASSESSED ON PAGE 04



04



21

Ptn. N.W.1/4, Sec.30 T.1S.,R.6W.

0211
22

Parcel Map No. 8867, P.M. 92/1-2
 Ptn. Parcel Map No. 8754, P.M. 90/64-65
 Parcel Map No. 8792, P.M. 97/44-45
 Parcel Map No. 8951, P.M. 113/19-22
 Ptn. Parcel Map No. 6875, P.M. 75/5-19, Amending Map P.M. 77/23-38
 Parcel Map No. 14456, P.M. 177/55-57
 Parcel Map No. 10999, P.M. 126/77-78
 Parcel Map No. 8951, P.M. 113/19-22
 Parcel Map No. 9428, P.M. 108/11-12

Assessor's Map
 Book 0238 Page 18
 San Bernardino County

REVISED
 01/06/10 LH
 06/12/12 BK-MC