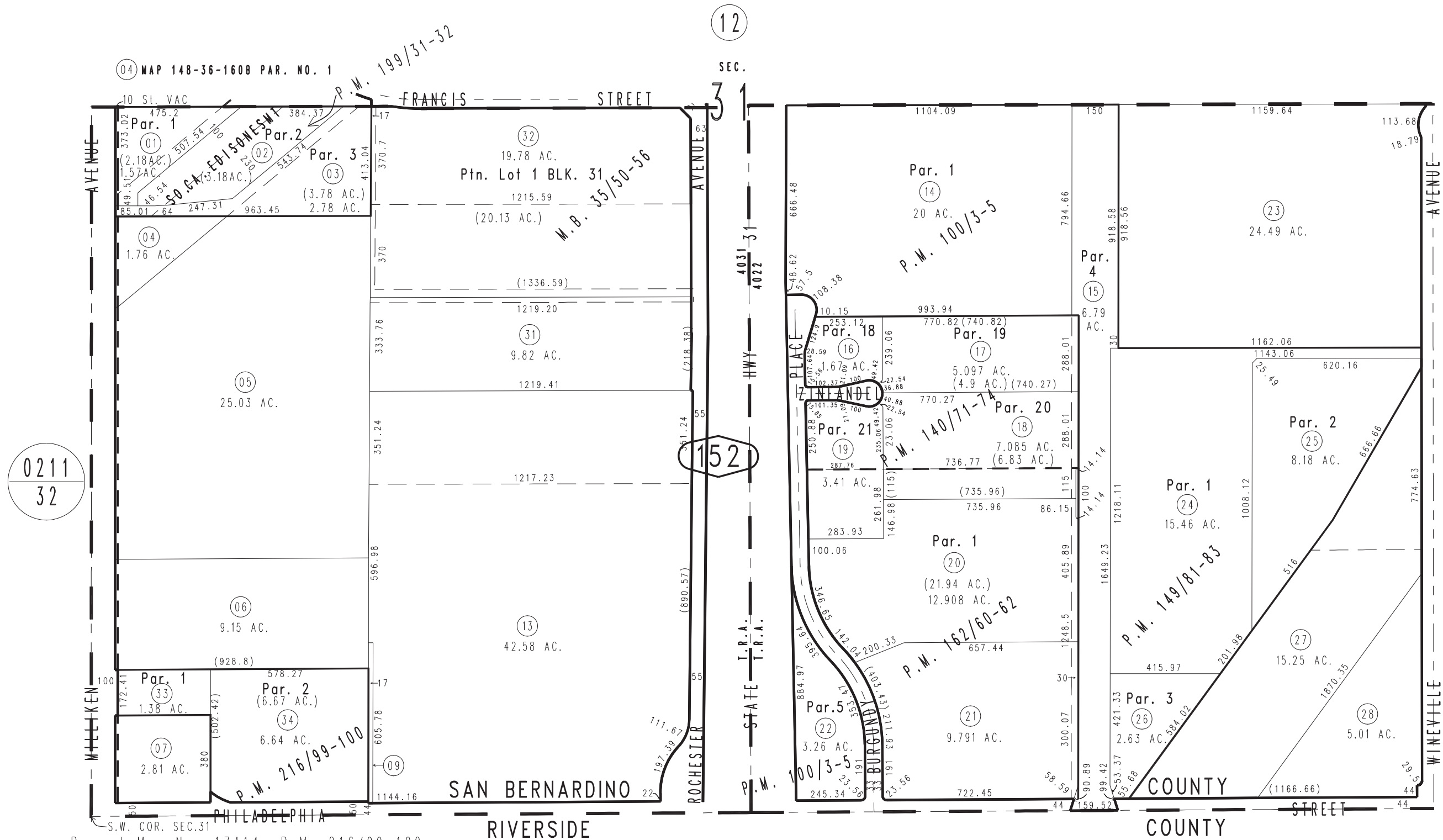


THIS MAP IS FOR THE PURPOSE OF AD VALOREM TAXATION ONLY.

Ptn. S.1/2 Sec.31, T.1S., R.6W., S.B.B.&M.

City of Ontario
Tax Rate Area
4022 4031

0238-15



0211
32

16

- Parcel Map No. 17414, P.M. 216/99-100
- Parcel Map No. 15851, P.M. 199/31-32
- Parcel Map No. 13022, P.M. 162/60-62
- Parcel Map No. 13061, P.M. 149/81-83
- Ptn. Parcel Map No. 11419, P.M. 140/71-74
- Ptn. Parcel Map No. 8498, P.M. 100/3-5
- Ptn. Tract No. 2244, M.B. 35/50-56

October 2004

Assessor's Map
Book 0238 Page 15
San Bernardino County

REVISED
04/23/19 KA