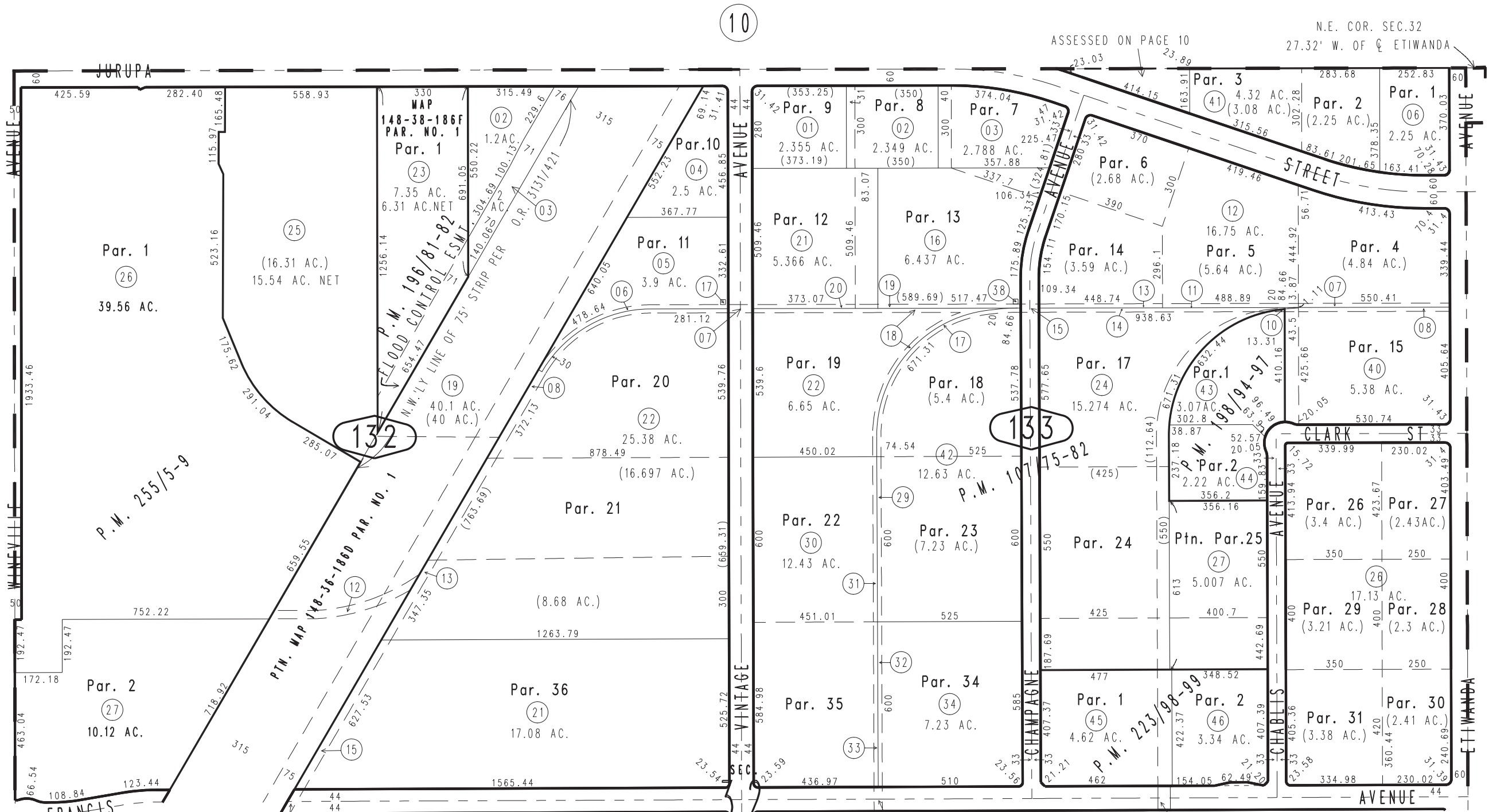


THIS MAP IS FOR THE PURPOSE OF AD VALOREM TAXATION ONLY.

N.1/2 Sec.32, T.1S.,R.6W., S.B.B.&M.

City of Ontario
Tax Rate Area
4022

0238-13



- (17) MAP 843-36-50A PAR. NO. 41 ESMT. ONLY
- (18) MAP 843-36-50, PAR. NO. 19, ESMT. ONLY
- (19) MAP 843-36-50, PAR. NO. 20, ESMT. ONLY
- (20) MAP 843-36-50, PAR. NO. 18, ESMT. ONLY
- (21) MAP 843-36-50, PAR. NO. 17, ESMT. ONLY
- (22) MAP 843-36-50, PAR. NO. 16, ESMT. ONLY
- (23) MAP 843-36-50, PAR. NO. 15, ESMT. ONLY
- (24) MAP 843-36-50, PAR. NO. 38, ESMT. ONLY
- (25) MAP 843-36-50, PAR. NO. 34, ESMT. ONLY
- (26) MAP 843-36-50, PAR. NO. 35, ESMT. ONLY
- (27) MAP 843-36-50, PAR. NO. 22, ESMT. ONLY
- (28) MAP 843-36-50, PAR. NO. 23, ESMT. ONLY
- (29) MAP 843-36-50, PAR. NO. 24, ESMT. ONLY
- (30) MAP 843-36-50, PAR. NO. 21, ESMT. ONLY
- (31) MAP 843-36-50, PAR. NO. 26, ESMT. ONLY
- (32) MAP 843-36-50, PAR. NO. 25, ESMT. ONLY
- (33) MAP 843-36-50, PAR. NO. 28, ESMT. ONLY
- (34) MAP 843-36-50, PAR. NO. 27, ESMT. ONLY
- (35) MAP 843-36-50, PAR. NO. 40, ESMT. ONLY
- (36) MAP 843-36-50, PAR. NO. 39, ESMT. ONLY
- (37) MAP 843-36-50, PAR. NO. 42 ESMT. ONLY

Parcel Map No. 19936, P.M. 255/5-9
 Parcel Map No. 18078, P.M. 223/98-99
 Parcel Map No. 15962, P.M. 198/94-97
 Parcel Map No. 15869, P.M. 196/81-82
 Ptn. Parcel Map No. 9252, P.M. 107/75-82