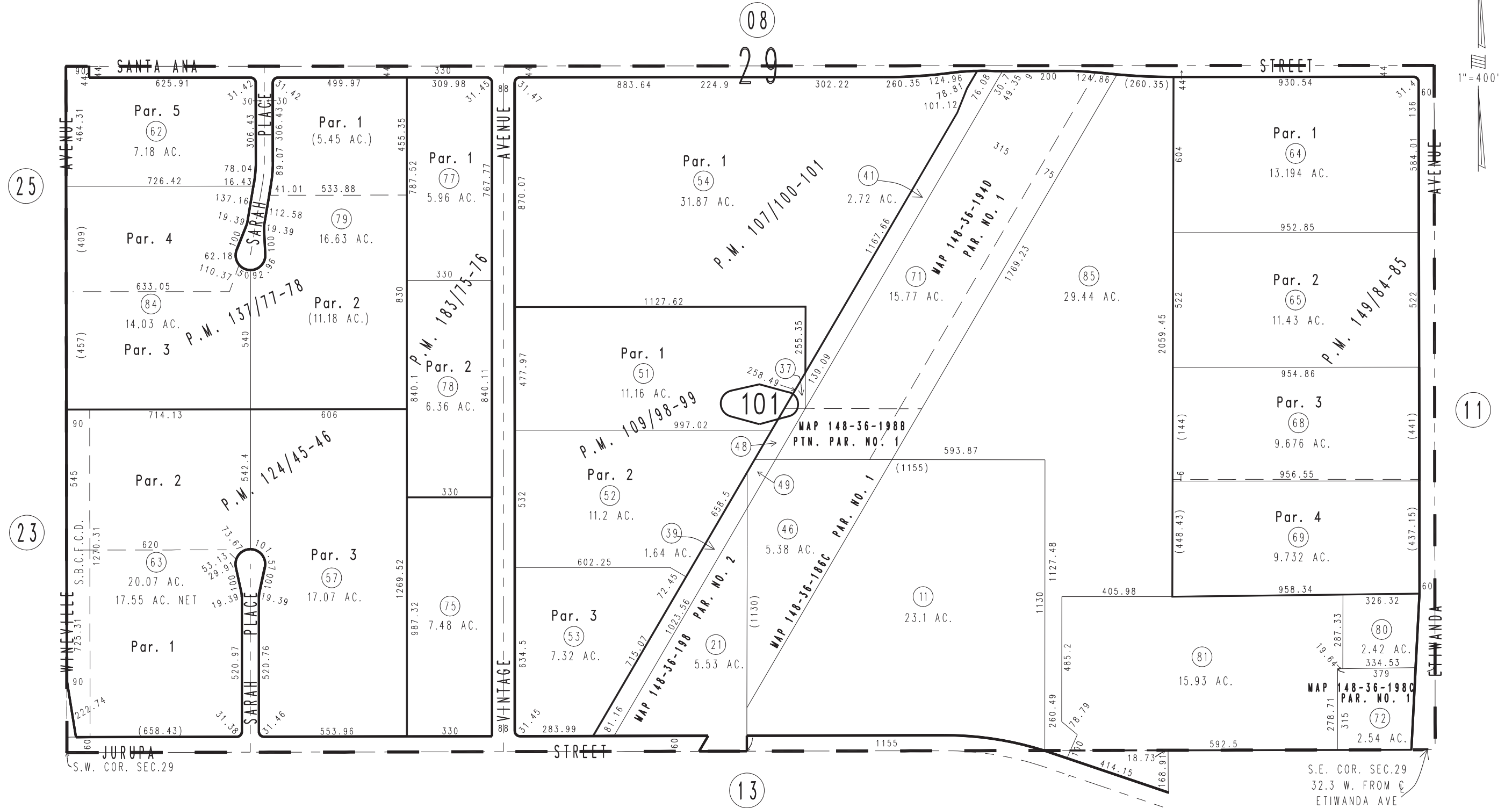


THIS MAP IS FOR THE PURPOSE OF AD VALOREM TAXATION ONLY.

Ptn. Sec.28, S.1/2 Sec.29, T.1S.,R.6W., S.B.B.&M.

City of Ontario
Tax Rate Area
4007

0238-10



Parcel Map No. 14965, P.M. 183/75-76
Parcel Map No. 10729, P.M. 148//25-26, Amending Map, P.M. 149/84-85
Parcel Map No. 11080, P.M. 137/77-78
Parcel Map No. 10392, P.M. 124/45-46
Parcel Map No. 10035, P.M. 109/98-99
Parcel Map No. 9037, P.M. 107/100-101

October 2004

Assessor's Map
Book 0238 Page 10
San Bernardino County

REVISED
03/28/14 GW
03/06/15 RU-MC