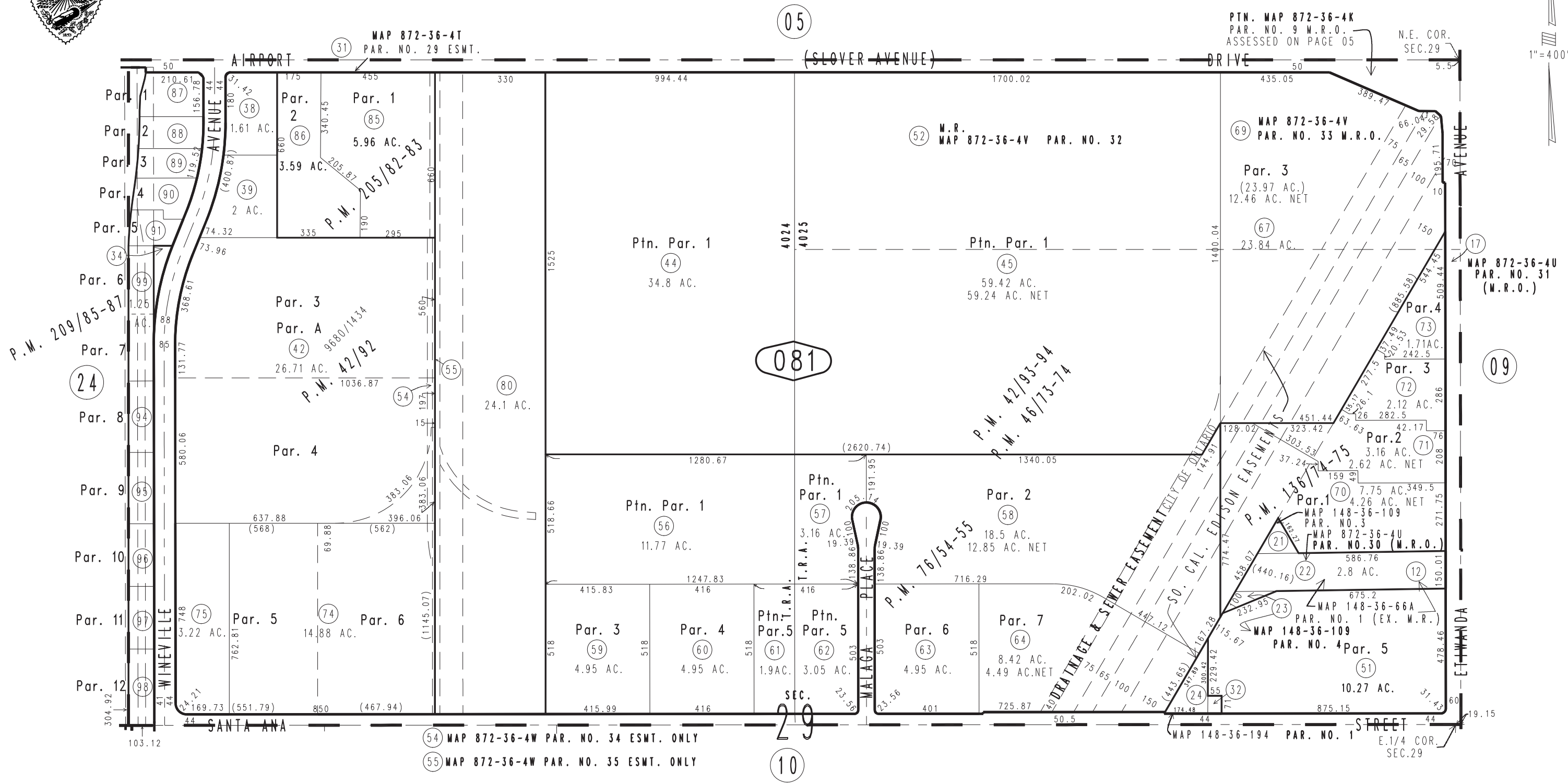
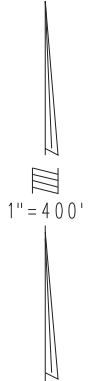


THIS MAP IS FOR THE PURPOSE OF AD VALOREM TAXATION ONLY.

N.1/2 Sec.29, T.1S.,R.6W., S.B.B.&M.

City of Ontario  
Tax Rate Area  
4024 4025

0238-08



Parcel Map No. 16246, P.M. 209/85-87  
Parcel Map No. 16106, P.M. 205/82-83  
Parcel Map No. 11358, P.M. 136/74-75  
Parcel Map No. 6084, P.M. 76/54-55  
Ptn. Parcel Map No. 4307, P.M. 42/93-94, Amended Map, P.M. 46/73-74  
Parcel Map No. 3661, P.M. 42/92

October 2004

Assessor's Map  
Book 0238 Page 08  
San Bernardino County

REVISED  
08/18/21 RU