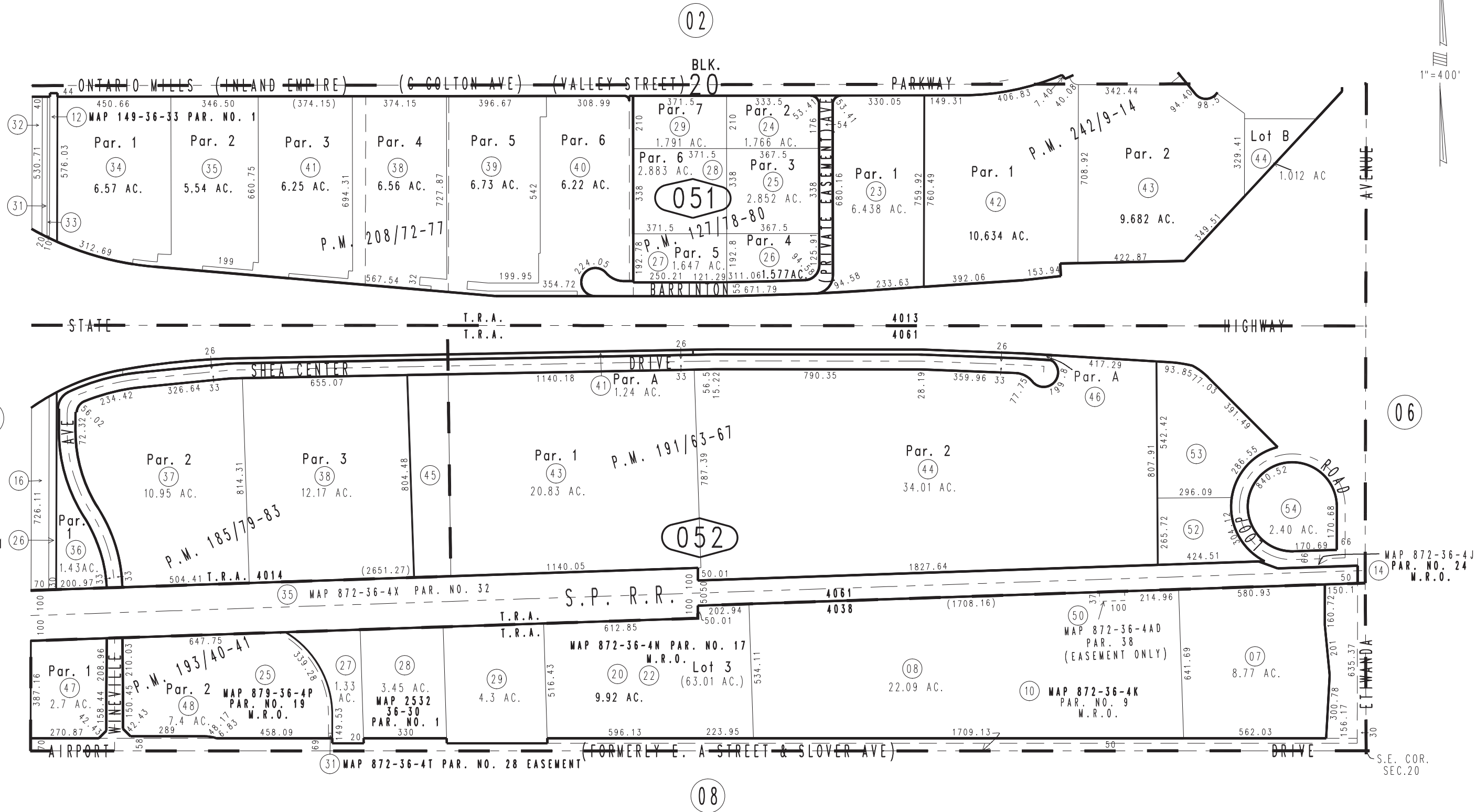


THIS MAP IS FOR THE PURPOSE OF AD VALOREM TAXATION ONLY.

Ptn. Tract No. 2244, M.B. 35/50-56

City of Ontario
Tax Rate Area
4013,4014
4038,4061

0238-05



Ptn. Parcel Map No. 19336, P.M. 242/9-14
 Parcel Map No. 16833, P.M. 208/72-77
 Parcel Map No. 15364, P.M. 193/40-41
 Parcel Map No. 12858, P.M. 191/63-67
 Ptn. Parcel Map No. 12858-1, P.M. 185/79-83
 Parcel Map No. 10898, P.M. 127/78-80

Ptn. N.1/2, Sec. 29
 T.1S., R.6W.

Assessor's Map
 Book 0238 Page 05
 San Bernardino County

REVISED
 02/14/17 KC
 09/07/17 KC
 09/17/19 KA