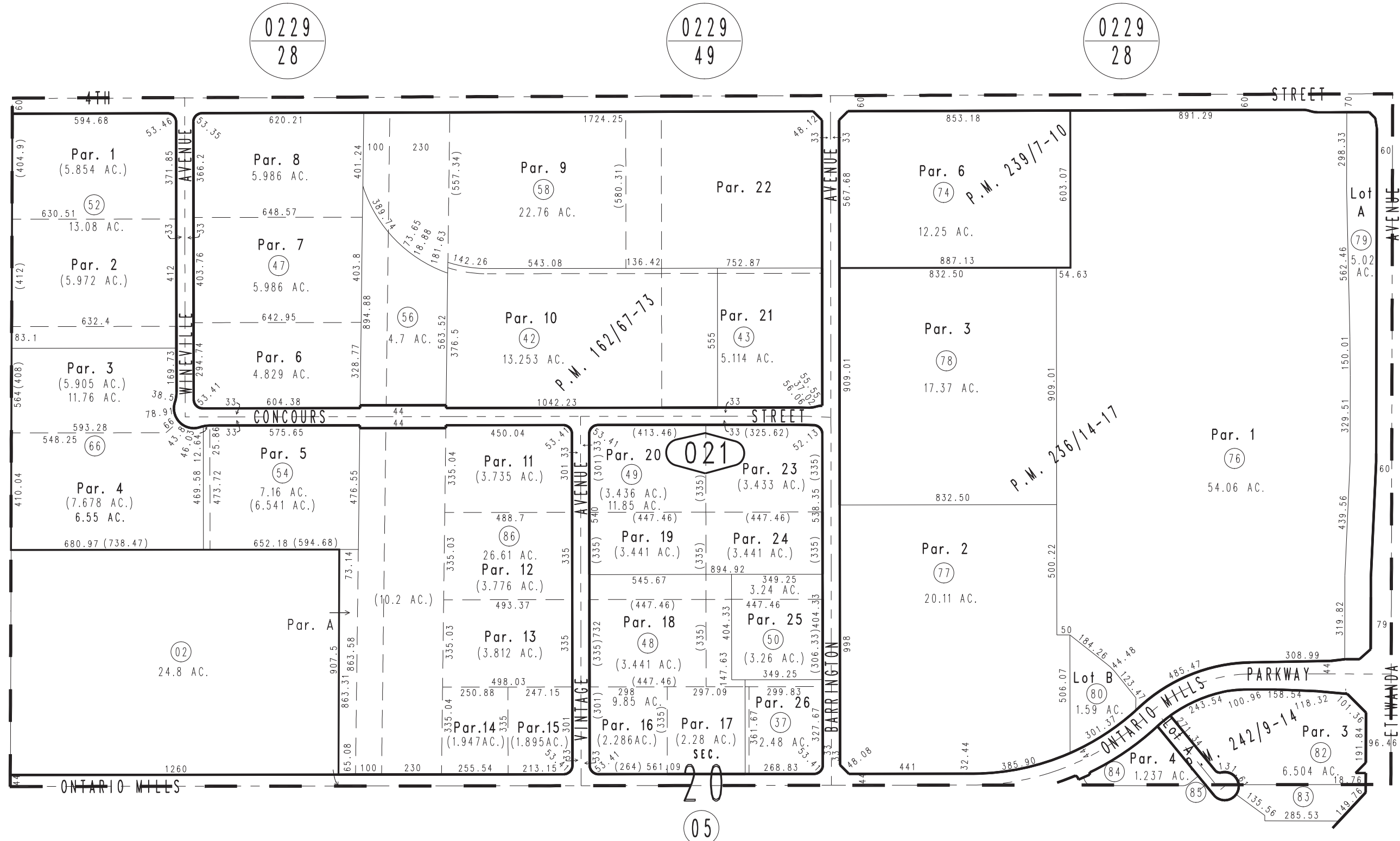


THIS MAP IS FOR THE PURPOSE
OF AD VALOREM TAXATION ONLY.

N.1/2 Sec.20, T.1S., R.6W., S.B.B.&M.

City of Ontario
Tax Rate Area
4020

0238-02



Ptn. Parcel Map No. 19336, P.M. 242/9-14
 Parcel Map No. 19003, P.M. 236/14-17
 Ptn. Parcel Map No. 17194, P.M. 209/25-27, Amending Map P.M. 239/7-10
 Parcel Map No. 10835, P.M. 162/67-73

Assessor's Map
 Book 0238 Page 02
 San Bernardino County