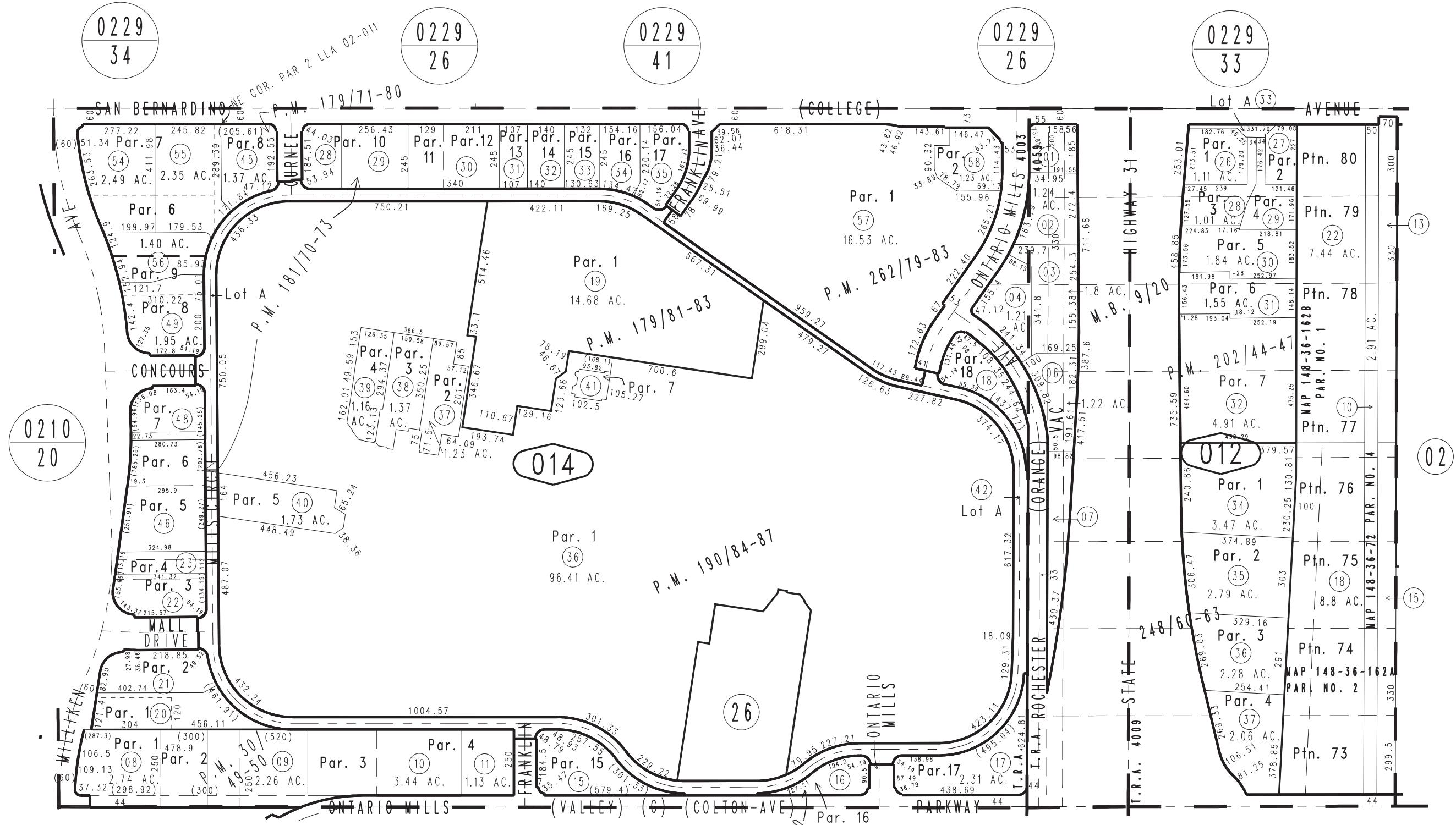


THIS MAP IS FOR THE PURPOSE OF AD VALOREM TAXATION ONLY.

# Ptn. Map of Rochester M.B. 9/20

City of Ontario  
Tax Rate Area  
4003 4009 4059

0238-01



Parcel Map No. 20087, P.M. 262/79-83  
 Parcel Map No. 15953, P.M. 202/44-47  
 Parcel Map No. 15255, P.M. 190/84-87  
 Parcel Map No. 14898, P.M. 181/70-73  
 Ptn. Parcel Map No. 14862, P.M. 179/81-83  
 Ptn. Parcel Map No. 13237, P.M. 179/71-80  
 Parcel Map No. 3259, P.M. 30/49-50

Parcel Map No. 19715, P.M. 248/60-63  
 Parcel Map No. 19715, P.M. 248/60-63  
 Parcel Map No. 19715, P.M. 248/60-63

Ptn. N.W.1/4, Sec. 19 T.1S., R.6W.

Assessor's Map  
Book 0238 Page 01  
San Bernardino County

REVISED  
11/01/22 KC  
04/04/24 RU