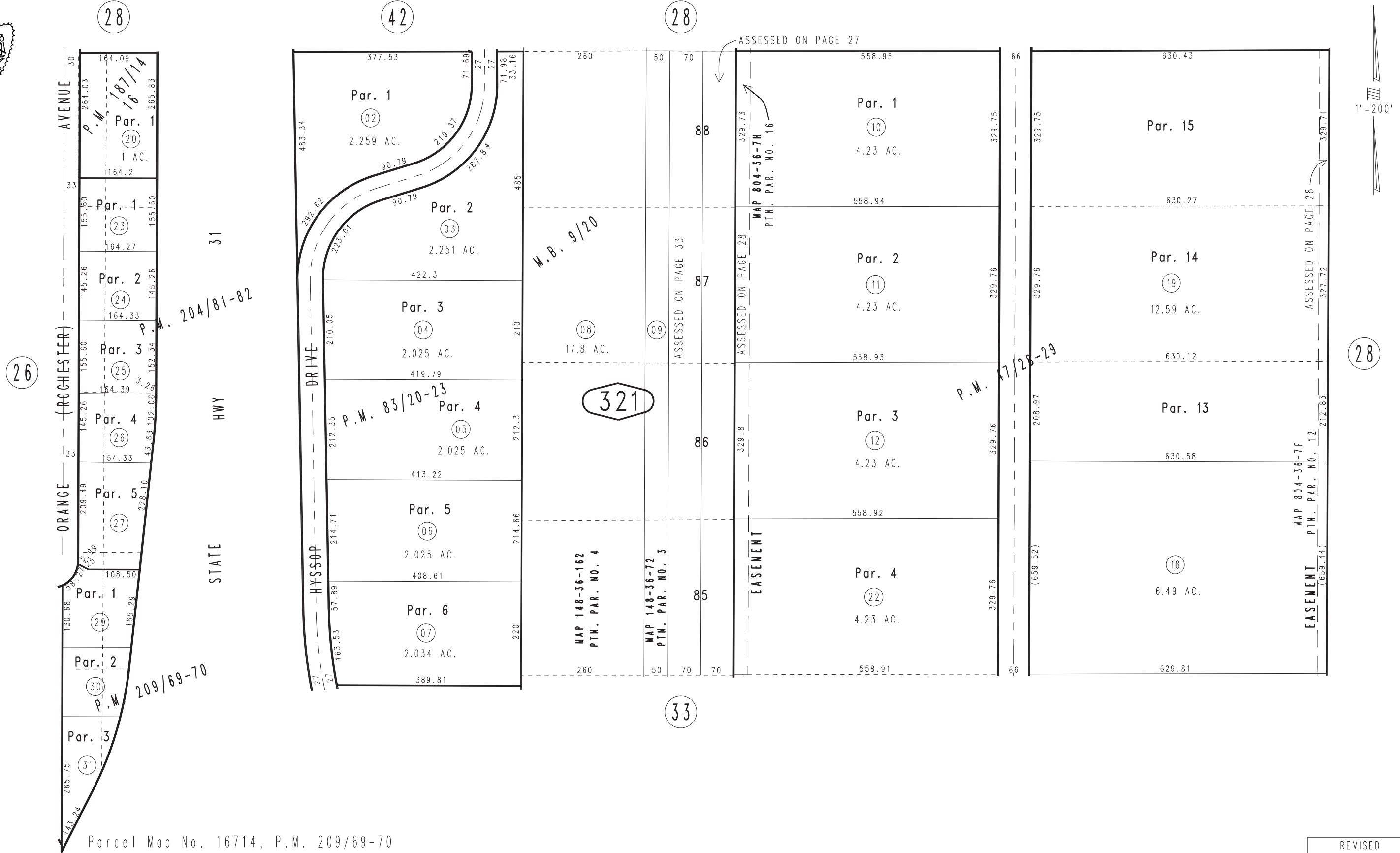


THIS MAP IS FOR THE PURPOSE OF AD VALOREM TAXATION ONLY.

Ptn. Map of Rochester M.B. 9/20

City of Rancho Cucamonga 0229-32
Tax Rate Area
15016



1" = 200'

Parcel Map No. 16714, P.M. 209/69-70
 Parcel Map No. 16118, P.M. 204/81-82
 Parcel Map No. 15207, P.M. 187/14-16
 Ptn. Parcel Map No. 7349, P.M. 83/20-23
 Ptn. Parcel Map No. 4749, P.M. 47/28-29

February 2004

Ptn. S.E.1/4, Sec. 18
T.1S., R.6W.

Assessor's Map
Book 0229 Page 32
San Bernardino County

REVISED
05/31/12 BK-MC