

THIS MAP IS FOR THE PURPOSE OF AD VALOREM TAXATION ONLY.

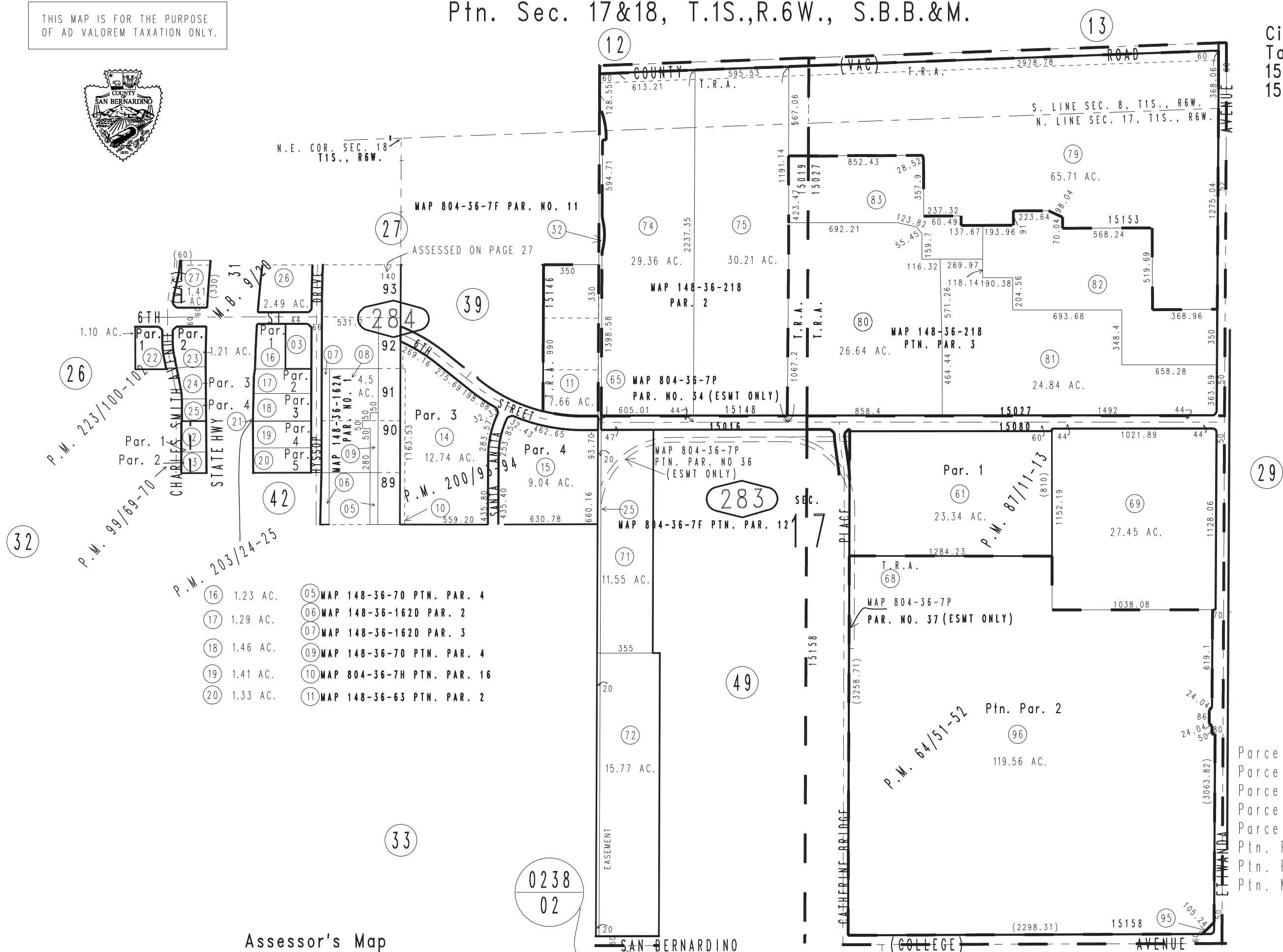


Ptn. Sec. 17&18, T.1S.,R.6W., S.B.B.&M.

0229-28

City of Rancho Cucamonga  
Tax Rate Area  
15016,15019,15080,15027  
15146,15148,15153,15158

1"=600'



- (16) 1.23 AC.      (05) MAP 148-36-70 PTN. PAR. 4
- (17) 1.29 AC.      (06) MAP 148-36-162D PAR. 2
- (18) 1.46 AC.      (07) MAP 148-36-162D PAR. 3
- (19) 1.41 AC.      (09) MAP 148-36-70 PTN. PAR. 4
- (20) 1.33 AC.      (10) MAP 804-36-7H PTN. PAR. 16
- (11) MAP 148-36-63 PTN. PAR. 2

Assessor's Map  
Book 0229 Page 28  
San Bernardino County

February 2004

Parcel Map No. 16009, P.M. 223/100-102  
Parcel Map No. 16010, P.M. 203/24-25  
Parcel Map No. 15665, P.M. 200/93-94  
Parcel Map No. 8891, P.M. 99/69-70  
Parcel Map No. 7951, P.M. 87/11-13  
Ptn. Parcel Map No. 6658, P.M. 64/51-52  
Ptn. Parcel Map No. 4749, P.M. 47/28-29  
Ptn. Map of Rochester M.B. 9/20

REVISED  
08/23/22 KA  
06/30/23 GW