

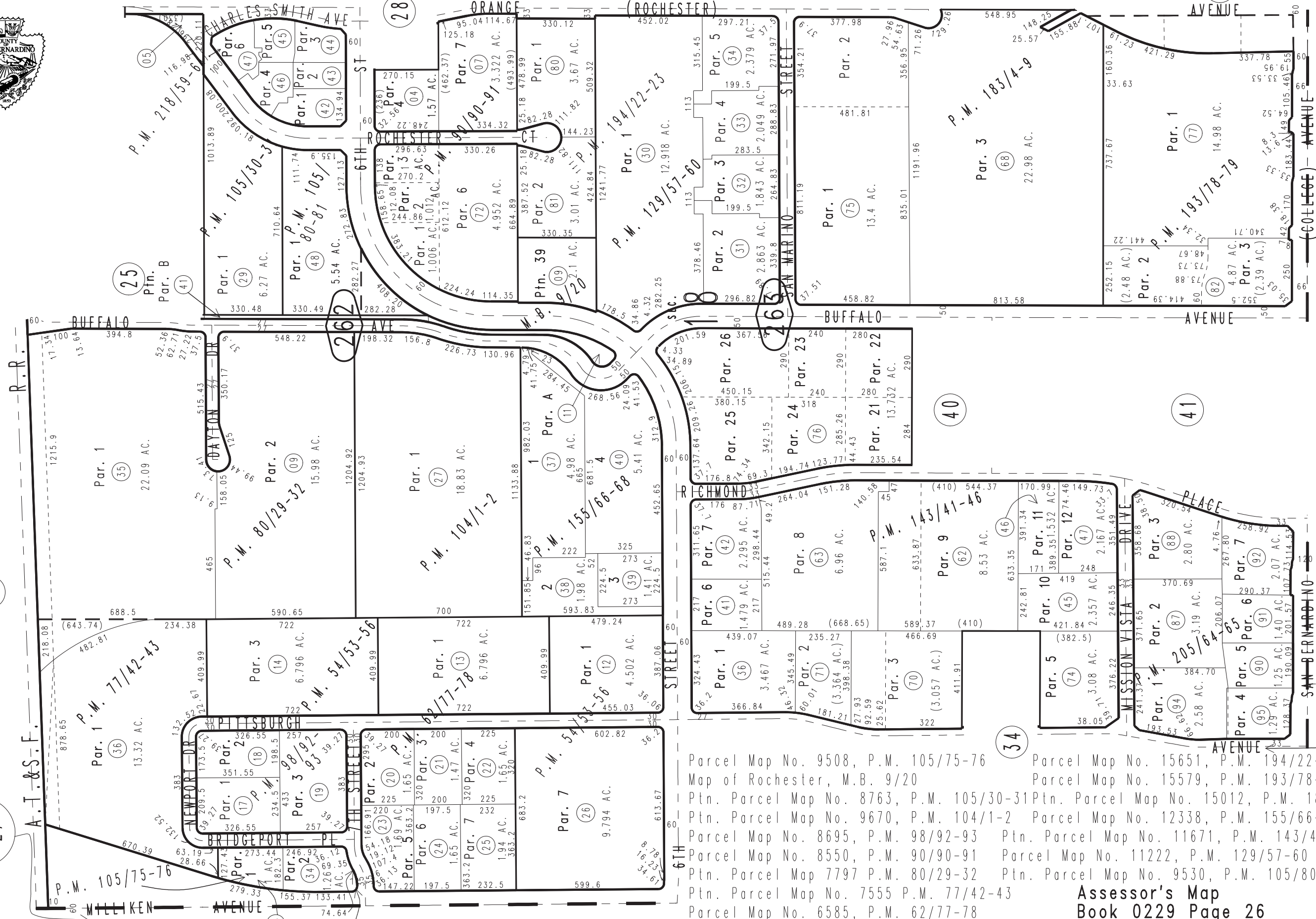
THIS MAP IS FOR THE PURPOSE OF AD VALOREM TAXATION ONLY.



Ptn. Sec.18, T.1S.,R.6W., S.B.B.&M.

City of Rancho Cucamonga 0229-26
Tax Rate Area 15016

1"=400'



0209
27

0238
01

0210
08

- Parcel Map No. 9508, P.M. 105/75-76
- Map of Rochester, M.B. 9/20
- Ptn. Parcel Map No. 8763, P.M. 105/30-31
- Ptn. Parcel Map No. 9670, P.M. 104/1-2
- Parcel Map No. 8695, P.M. 98/92-93
- Parcel Map No. 8550, P.M. 90/90-91
- Ptn. Parcel Map 7797 P.M. 80/29-32
- Parcel Map No. 7555 P.M. 77/42-43
- Parcel Map No. 6585, P.M. 62/77-78
- Ptn. Parcel Map No. 5760, P.M. 54/53-56
- Parcel Map No. 15651, P.M. 194/22-23
- Parcel Map No. 15579, P.M. 193/78-79
- Ptn. Parcel Map No. 15012, P.M. 183/4-9
- Parcel Map No. 12338, P.M. 155/66-6
- Ptn. Parcel Map No. 11671, P.M. 143/41-46
- Parcel Map No. 11222, P.M. 129/57-60
- Ptn. Parcel Map No. 9530, P.M. 105/80-81

Assessor's Map
Book 0229 Page 26
San Bernardino County

February 2004

REVISED
02/05/14 KC

Parcel Map No. 16300, P.M. 205/64-65
Parcel Map No. 16139, P.M. 218/59-61