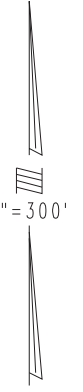
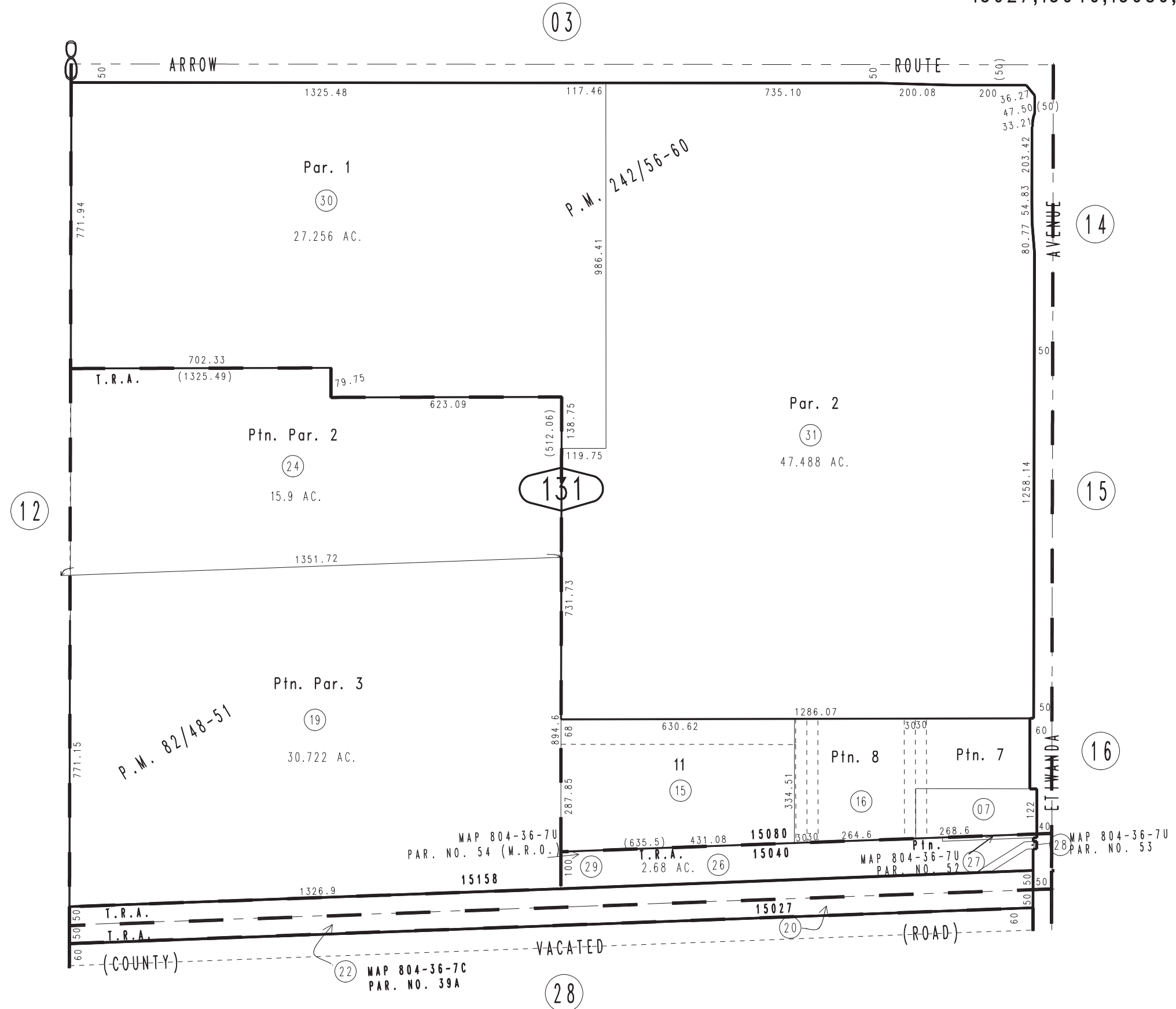


THIS MAP IS FOR THE PURPOSE
OF AD VALOREM TAXATION ONLY.



Ptn. S.E.1/4 Sec.8, T.1S.,R.6W., S.B.B.&M.

City of Rancho Cucamonga 0229-13
Tax Rate Area
15027,15040,15080,15158



Parcel Map No. 19448, P.M. 242/56-60
Ptn. Parcel Map No. 7847, P.M. 82/48-51
Ptn. Tract No. 5377, M.B. 62/90
West Etiwanda Land & Town Co. Sub. 15/12

February 2004

Assessor's Map
Book 0229 Page 13
San Bernardino County

REVISED
06/29/23 GW