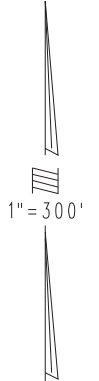
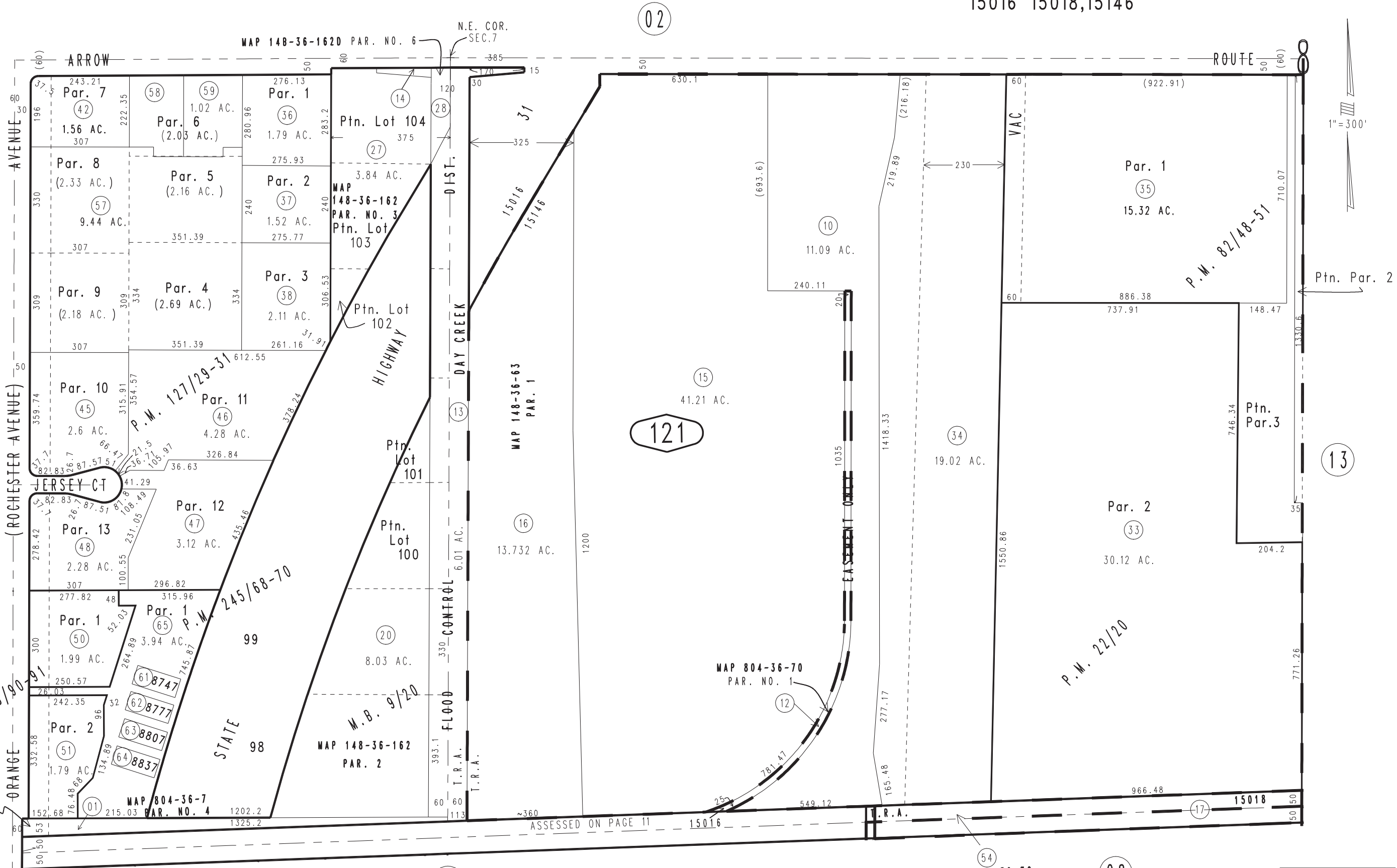


THIS MAP IS FOR THE PURPOSE
OF AD VALOREM TAXATION ONLY.

Ptn. E.1/2 Sec.7, & Ptn. S.W.1/4 Sec.8, T.1S.,R.6W., S.B.B.&M. City of Rancho Cucamonga 0229-12 Tax Rate Area 15016 15018,15146



11

121

13

53 MAP 804-36-7
PAR. NO. 4A

54 MAP 804-36-7G
PAR. NO. 14A

27

28

REVISED
06/30/23 GW

Parcel Map No. 10782, P.M. 127/29-31
Ptn. Parcel Map No. 7847, P.M. 82/48-51
Ptn. Parcel Map No. 2421, P.M. 22/20

Pin. Rochester M.B. 9/20
Parcel Map No. 19614, P.M. 245/68-70, Condo Plan 2016-0048439
Ptn. Parcel Map No. 12121, P.M. 143/90-91

Assessor's Map
Book 0229 Page 12
San Bernardino County