

THIS MAP IS FOR THE PURPOSE OF AD VALOREM TAXATION ONLY.

Ptn. S.1/2 Sec.7, T.1S.,R.6W., S.B.B.&M.

City of Rancho Cucamonga 0229-11  
Tax Rate Area  
15016 15017 15147



0209  
48

MAP 804-36-7N  
PAR. NO. 30

0209  
14

MAP 804-36-7N  
PAR. NO. 31

S.W. COR.  
SEC.7

MAP 804-36-7N  
PAR. NO. 23A

MAP 804-36-7N  
PAR. 24 M.R.O.

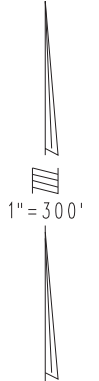
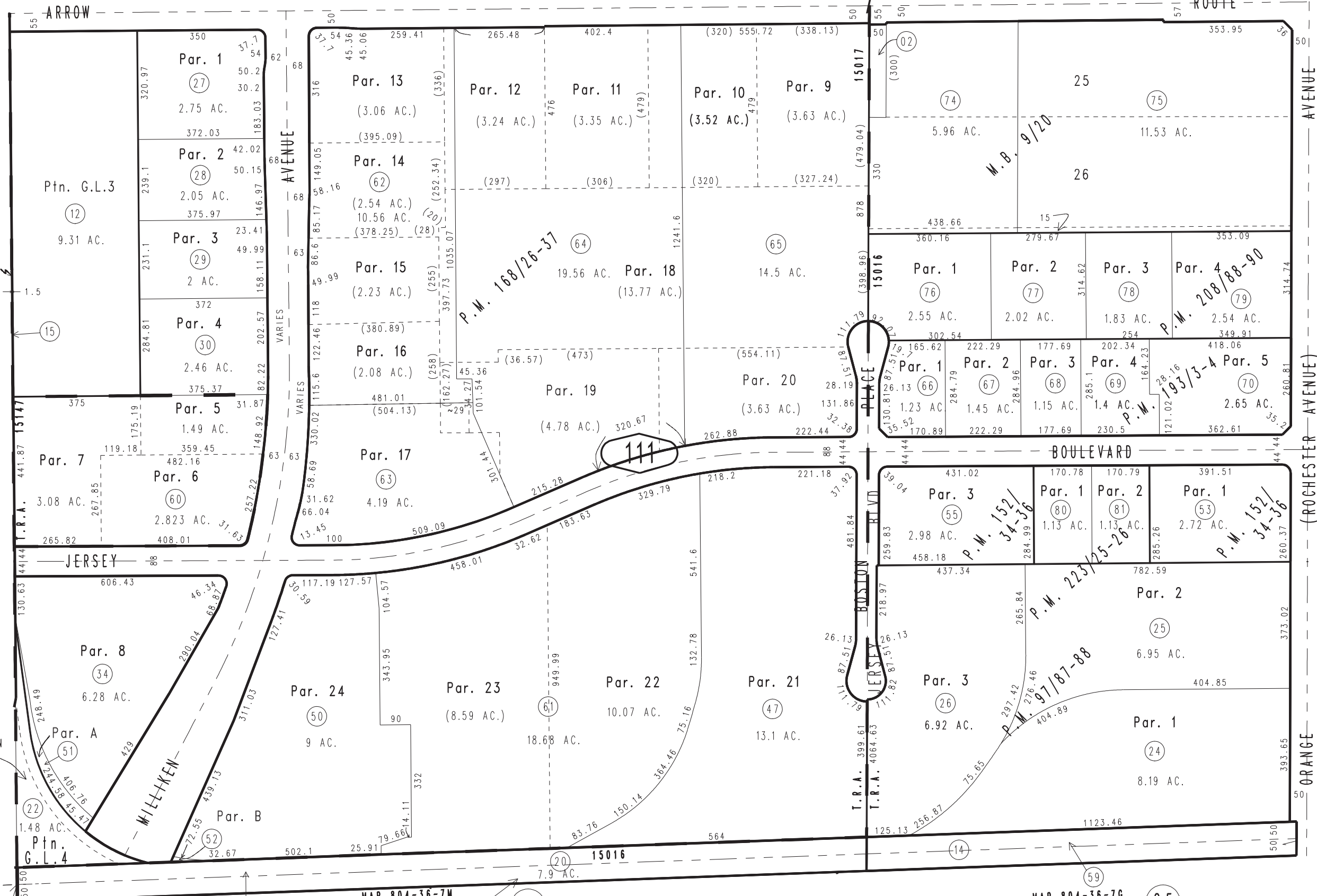
MAP 804-36-7G  
PAR. NO. 13A

Parcel Map No. 11891, P.M. 140/83-90, Amended Map 168/26-37  
Parcel Map No. 8648, P.M. 97/87-88  
Ptn. Rochester M.B. 9/20

Parcel Map No. 17988, P.M. 223/25-26  
Parcel Map No. 16507, P.M. 208/88-90  
Parcel Map No. 15516, P.M. 193/3-4  
Parcel Map No. 12781, P.M. 152/34-36

Assessor's Map  
Book 0229 Page 11  
San Bernardino County

REVISED  
07/03/23 GW



12

25

26

01

SEC.

0209

MAP 804-36-7N

0209

MAP 804-36-7N

S.W. COR.

MAP 804-36-7N

MAP 804-36-7N

MAP 804-36-7G

Parcel Map No. 11891, P.M. 140/83-90, Amended Map 168/26-37  
Parcel Map No. 8648, P.M. 97/87-88  
Ptn. Rochester M.B. 9/20

Parcel Map No. 17988, P.M. 223/25-26  
Parcel Map No. 16507, P.M. 208/88-90  
Parcel Map No. 15516, P.M. 193/3-4  
Parcel Map No. 12781, P.M. 152/34-36

Assessor's Map  
Book 0229 Page 11  
San Bernardino County

REVISED  
07/03/23 GW