

THIS MAP IS FOR THE PURPOSE OF AD VALOREM TAXATION ONLY.

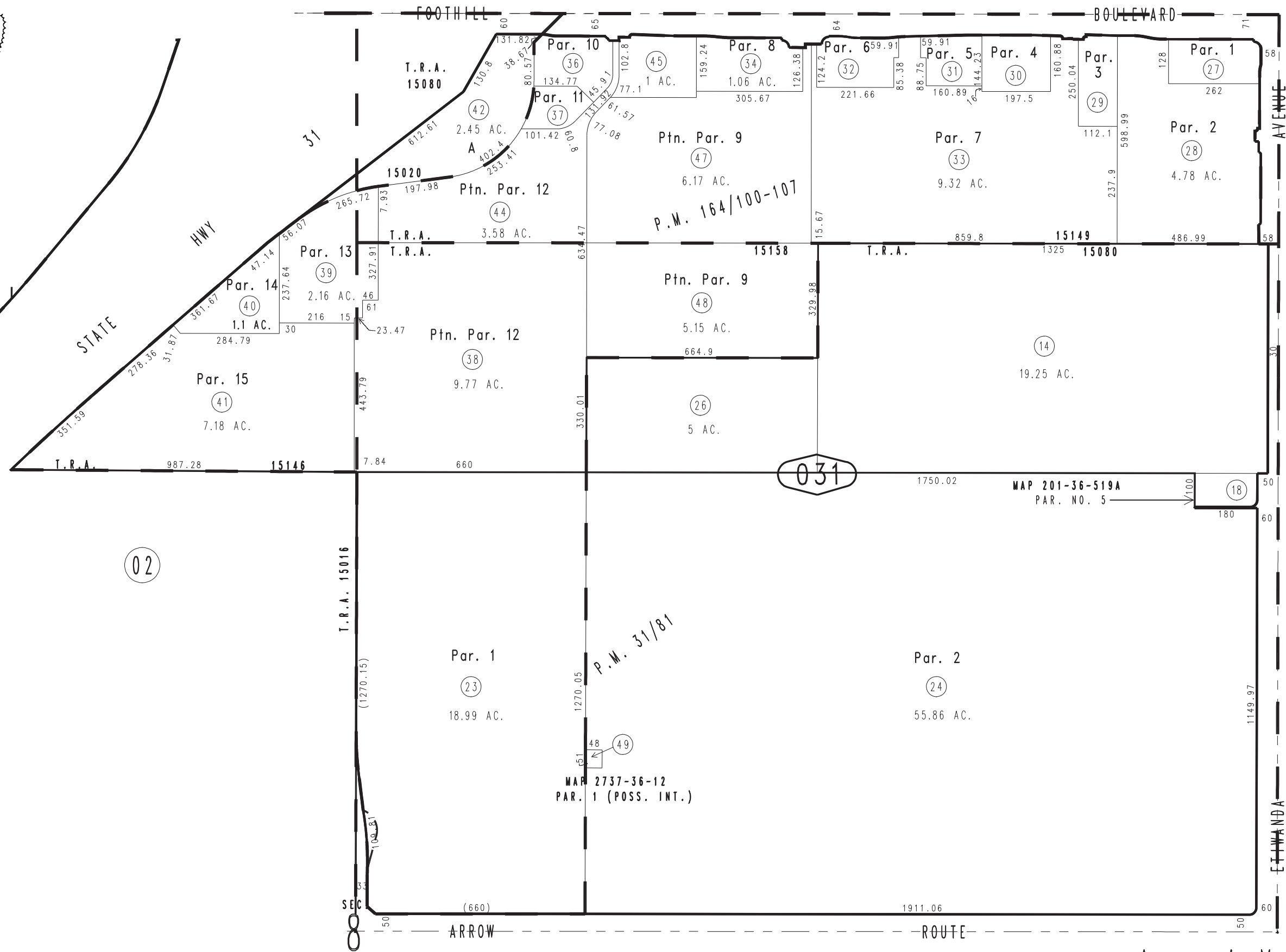
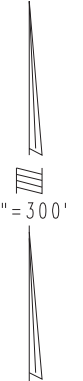


1090
56

N.E.1/4 Sec.8, T.1S.,R.6W., S.B.&M.

1090
60

City of Rancho Cucamonga 0229-03
Tax Rate Area
15020,15016,15080,15146,15149,15158



02

031

31

04

13

February 2004

Parcel Map No. 13724, P.M. 164/100-107
Parcel Map No. 3476, P.M. 31/81

Assessor's Map
Book 0229 Page 03
San Bernardino County

REVISED
06/30/23 GW