

THIS MAP IS FOR THE PURPOSE OF AD VALOREM TAXATION ONLY.

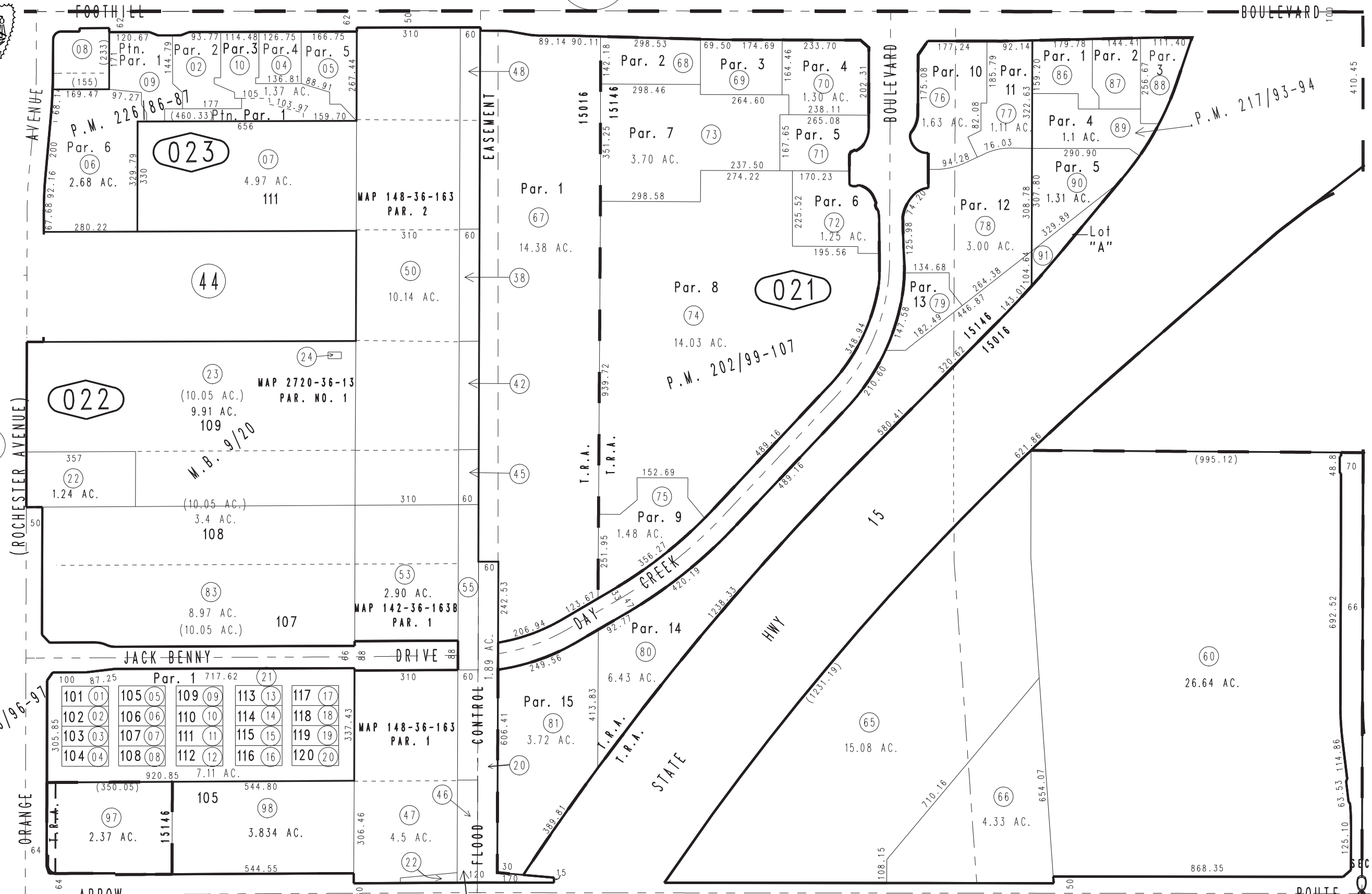
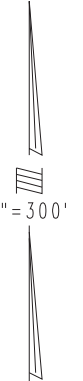
N.W.1/4 Sec.8, T.1S.,R.6W., S.B.B.&M.

City of Rancho Cucamonga 0229-02
Tax Rate Area
15016,15146

1090
12

1090
54

1090
55



Parcel Map No. 17229, P.M. 206/96-97, Condo Plan 05-0204208
Parcel Map No. 16033, P.M. 202/99-107
Ptn. Rochester, M.B. 9/20
MAP 148-36-163C
PAR. NO. 1

Parcel Map No. 17818, P.M. 226/86-87
Parcel Map No. 17077, P.M. 217/93-94

Assessor's Map
Book 0229 Page 02
San Bernardino County

REVISED
04/11/23 JH
04/13/23 JH
06/30/23 GW
09/19/23 KA