

THIS MAP IS FOR THE PURPOSE OF AD VALOREM TAXATION ONLY.

Ptn. N.1/2 Sec.7, T.1S.,R.6W., S.B.B.&M.

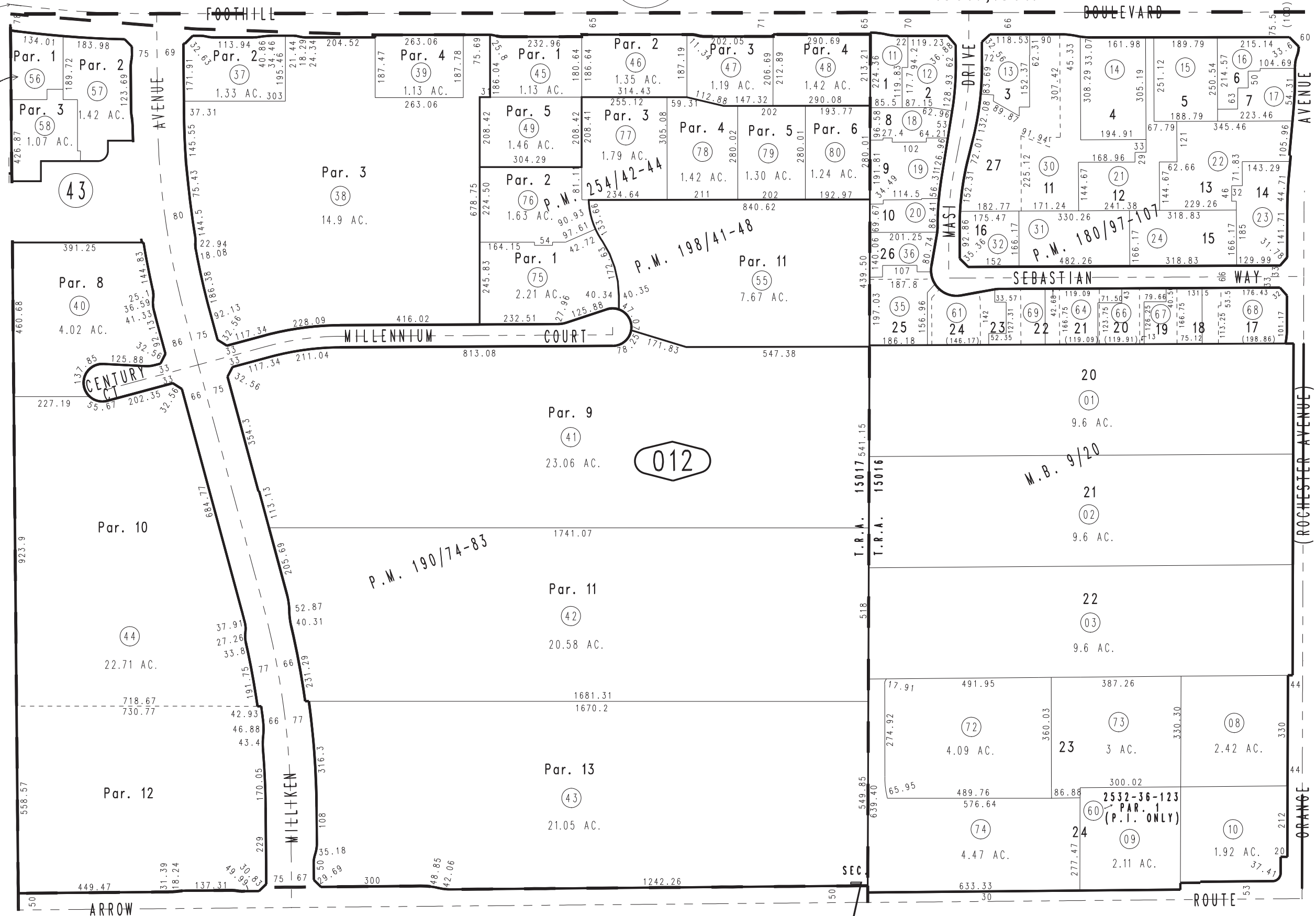
1090
12

City of Rancho Cucamonga 0229-01
Tax Rate Area
15016,15017



P.M. 216/65-66

N.W. COR.



0208
96

012

02

REVISED
03/14/18 GW
08/04/20 GW

Parcel Map No. 15295, P.M. 190/74-83
Parcel Map No. 13845, P.M. 180/97-107
Ptn. Rochester, M.B. 9/20

Parcel Map No. 19669, P.M. 254/42-44
Ptn. Parcel Map No. 17426, P.M. 216/65-66
Ptn. Parcel Map No. 15630, P.M. 198/41-48

11

Assessor's Map
Book 0229 Page 01
San Bernardino County