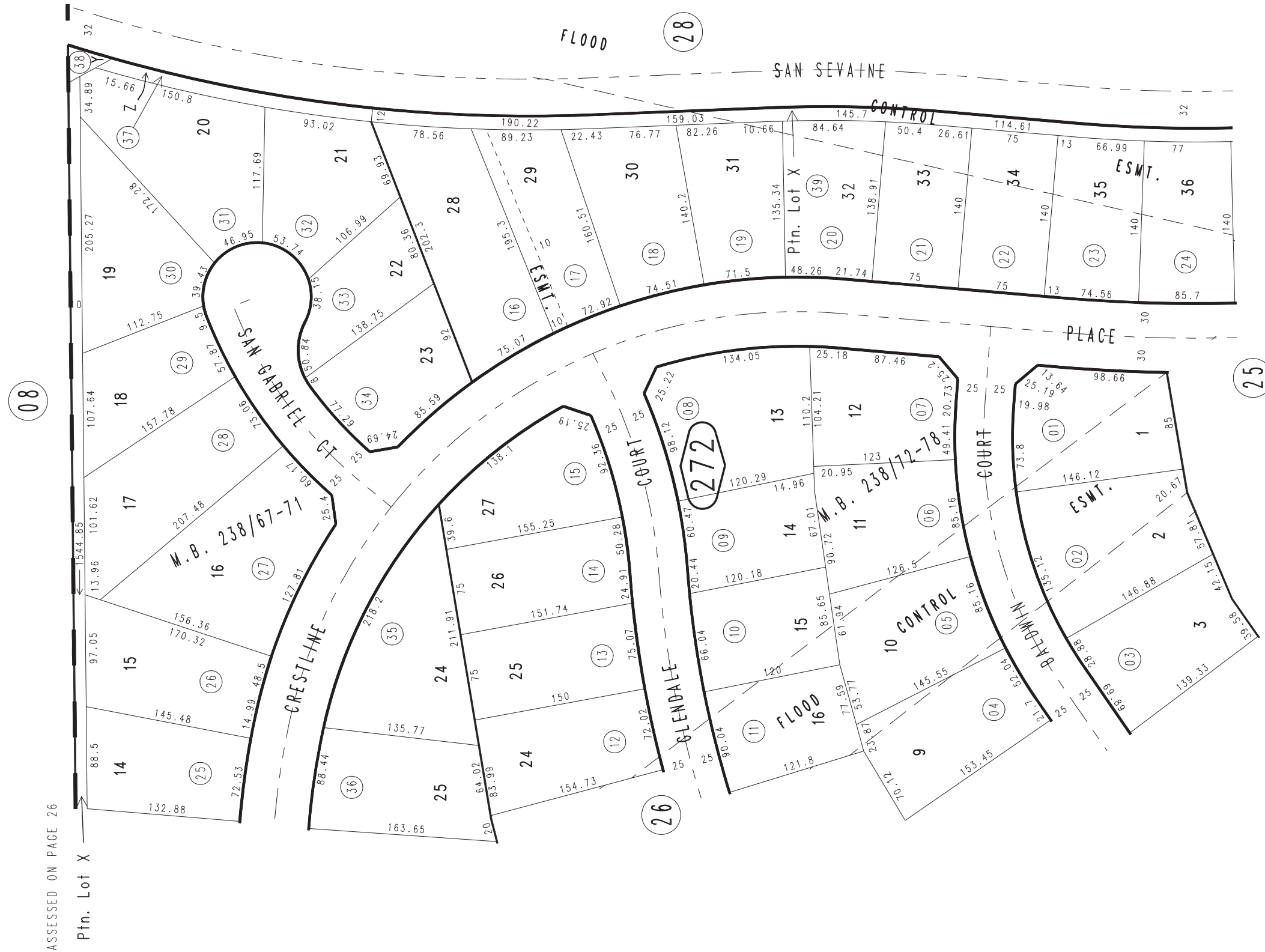


THIS MAP IS FOR THE PURPOSE
OF AD VALOREM TAXATION ONLY.

Ptn. Tract No. 13565-9, M.B. 217/53-58
Amended Map, M.B. 238/72-78

City of Rancho Cucamonga
Tax Rate Area
15109

0226-27



ASSESSED ON PAGE 26

Ptin. Lot X