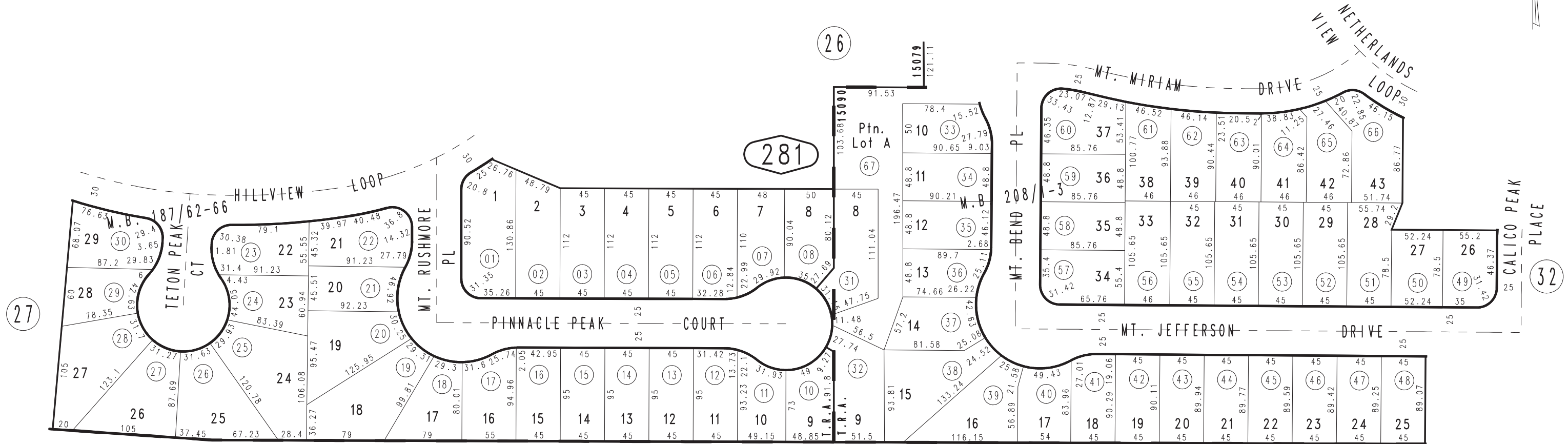


THIS MAP IS FOR THE PURPOSE OF AD VALOREM TAXATION ONLY.

Ptn. Tract No. 12942, M.B. 187/62-66

City of Rancho Cucamonga 0225-28
Tax Rate Area
15079,15090



STATE

HIGHWAY

210

1089
01

1089
15

1089
16

July 2004

Ptn. Tract No. 13563, M.B. 208/1-3

Ptn. S.W.1/4, Sec.30
T.1N.,R.6W.

Assessor's Map
Book 0225 Page 28
San Bernardino County

REVISED
08/08/25 RU