

THIS MAP IS FOR THE PURPOSE
OF AD VALOREM TAXATION ONLY.

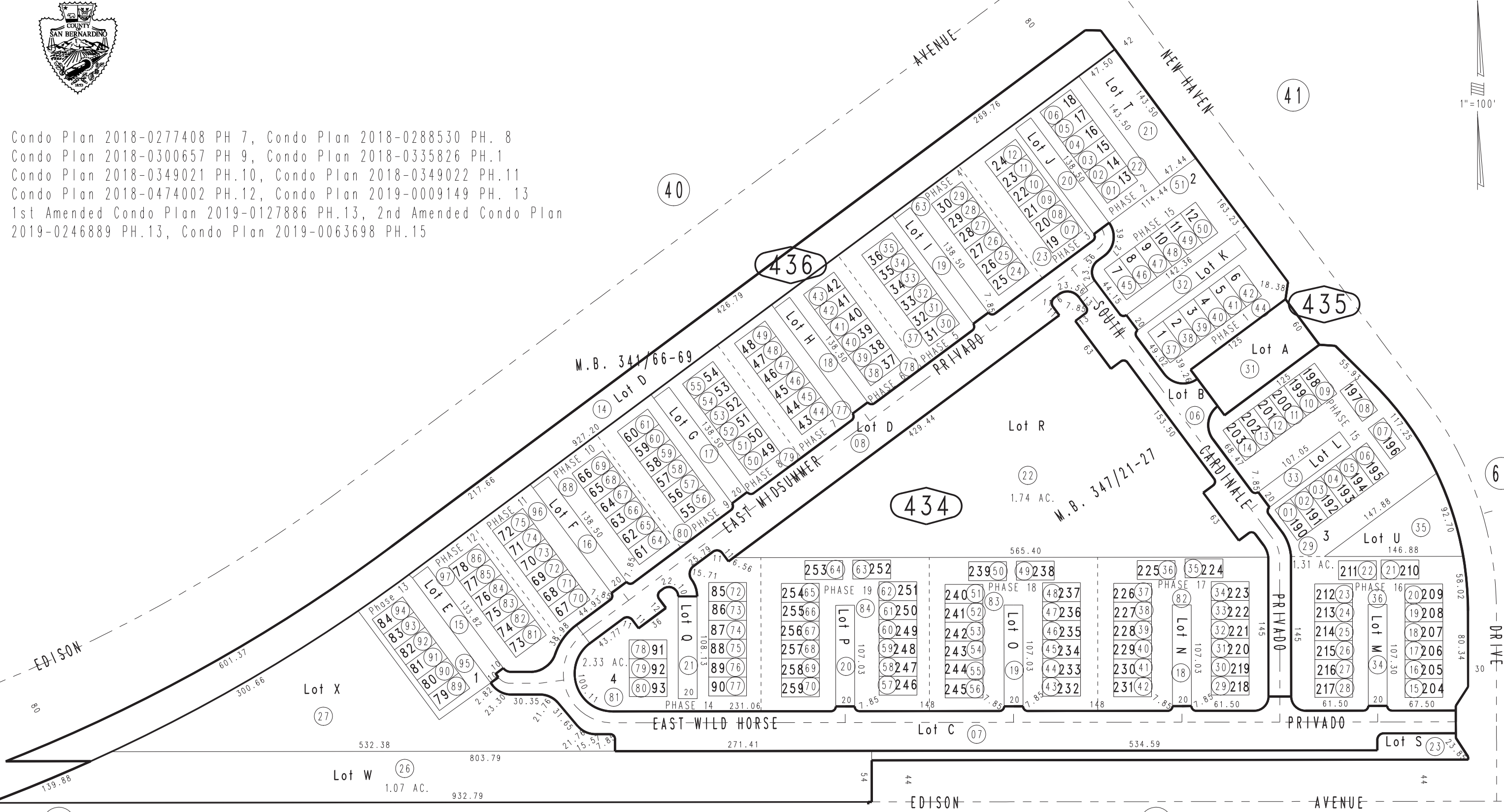
Ptn. Tract No. 18922-4, M.B. 341/66-69

City of Ontario
Tax Rate Area
4090

0218 - 43



Condo Plan 2018-0277408 PH 7, Condo Plan 2018-0288530 PH. 8
Condo Plan 2018-0300657 PH 9, Condo Plan 2018-0335826 PH.1
Condo Plan 2018-0349021 PH.10, Condo Plan 2018-0349022 PH.11
Condo Plan 2018-0474002 PH.12, Condo Plan 2019-0009149 PH. 13
1st Amended Condo Plan 2019-0127886 PH.13, 2nd Amended Condo Plan
2019-0246889 PH.13, Condo Plan 2019-0063698 PH.15



September 2017 RU

Tract No. 20061, M.B. 347/21-27, Condo Plan 2018-0070558 PH.15, Condo Plan 2018-0121463 PH.16,
Condo Plan 2018-0121464 PH.17, Condo Plan 2018-0121465 PH.18, Condo Plan 2018-0121466 PH.19,
Condo Plan 2018-0148968 PH.2, Condo Plan 2018-0148969 PH.3, Condo Plan 2018-0212530 PH. 4
Condo Plan 2018-0212531 PH 5, Condo Plan 2018-0267219 PH. 6
Condo Plan 2018-0218465 PH 14, Amended Condo Plan 2019-0041177 PH. 14
Ptn. N.E. 1/4, Sec. 14
T.2S., R.7W.

Assessor's Map
Book 0218 Page 43
San Bernardino County

REVISED	
02/15/19	GW
04/10/19	GW
05/16/19	GW
05/28/19	GW
05/29/19	GW
09/16/19	RU