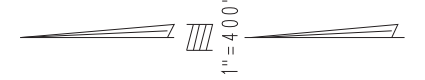


THIS MAP IS FOR THE PURPOSE OF AD VALOREM TAXATION ONLY.

W.1/2 Sec.12, T.2S.,R.7W., S.B.B.&M.

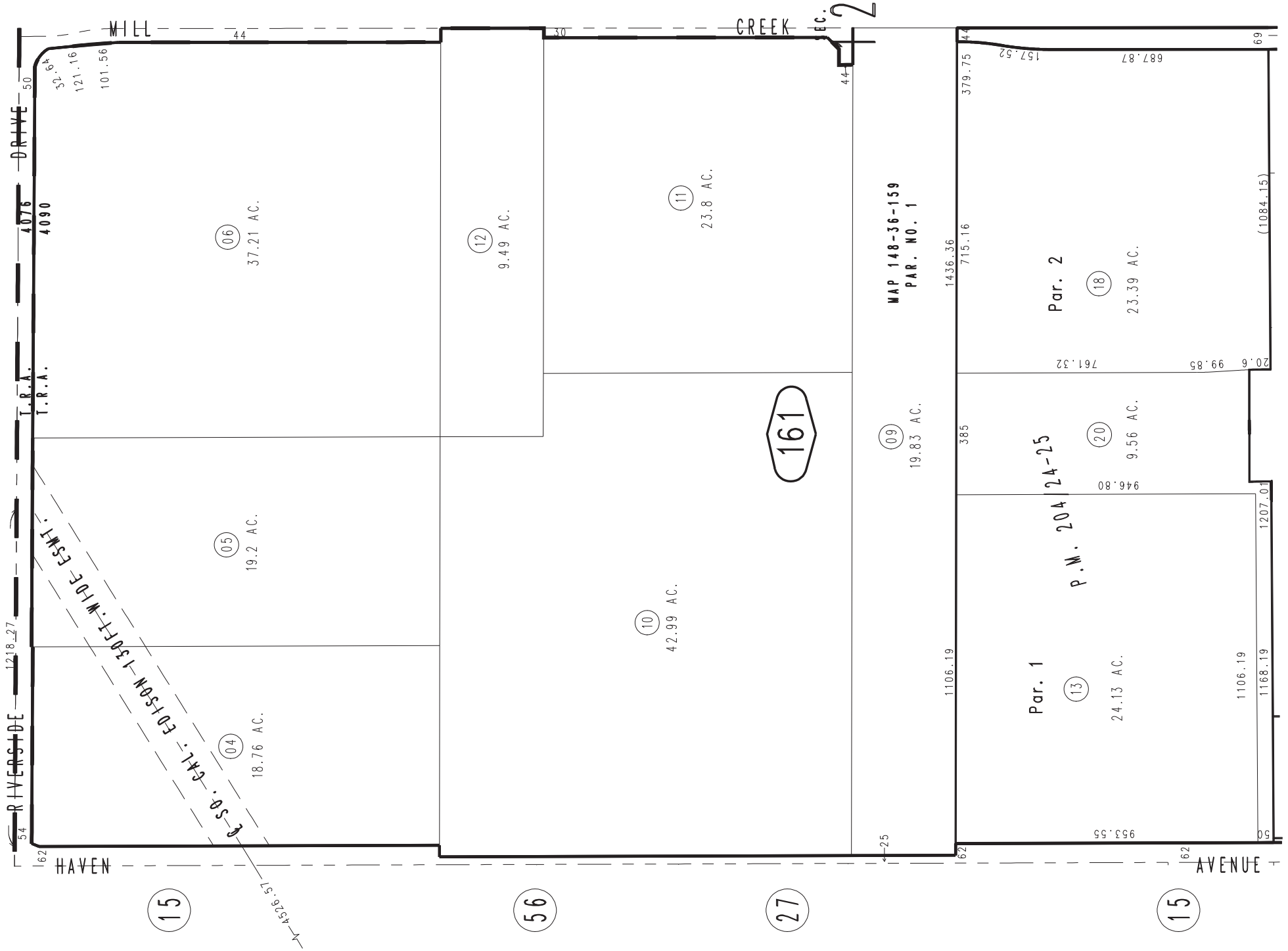
City of Ontario
Tax Rate Area
4076 4090

0218 - 16



1083
45

1083
40



01

20

08

REVISED	
04/12/23	KA
06/26/23	KA
07/11/23	KA
01/26/24	KA
05/09/24	RU
06/21/24	RU