

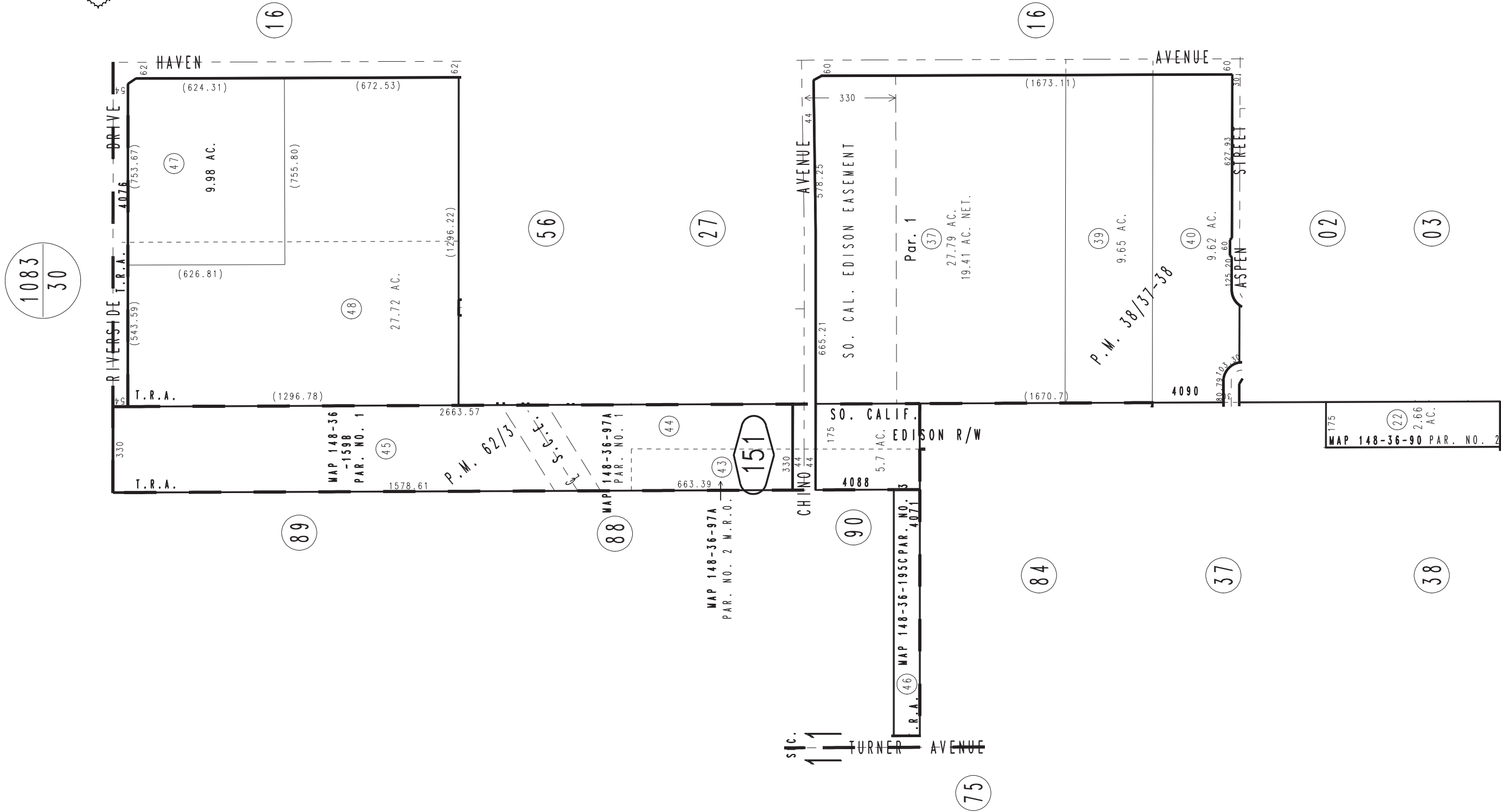
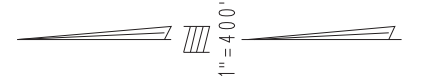
THIS MAP IS FOR THE PURPOSE OF AD VALOREM TAXATION ONLY.



E.1/2 Sec.11, T.2S.,R.7W., S.B.B.&M.

City of Ontario  
Tax Rate Area  
4071 4088 4090

0218 - 15



1083  
30

September 2004

Ptn. Parcel Map No. 5978, P.M. 62/3  
Ptn. Parcel Map No. 4117, P.M. 38/37-38

Assessor's Map  
Book 0218 Page 15  
San Bernardino County

REVISED  
05/09/24 RU