

THIS MAP IS FOR THE PURPOSE OF AD VALOREM TAXATION ONLY.

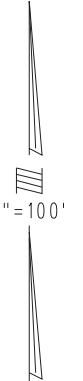


Ptn. Tract No. 18048. M.B. 334/10-15

City of Ontario
Tax Rate Area
4089

0218 - 07

23

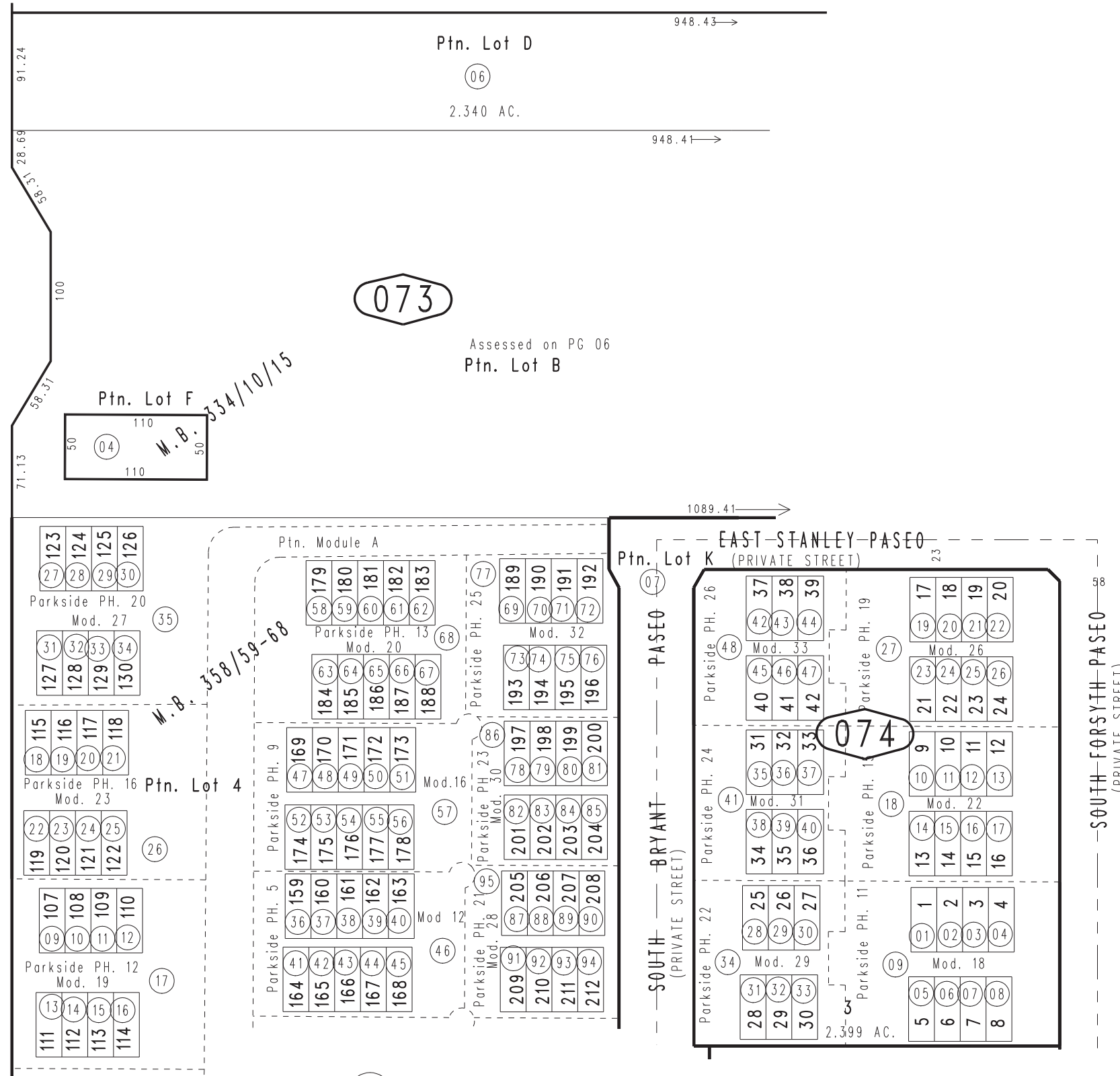


23

06

073

Assessed on PG 06
Ptn. Lot B



Ptn. Tract No. 20316, M.B. 358/59-68
Parkside Condo Plans:
2021-0465926 Mod. A, 2022-0236582 Mod. 12 PH. 5
2022-0313685 Mod. 16 PH. 9, 2022-0314110 Mod. 19 PH.12
2022-0314303 Mod. 20 PH.13, 2022-0314582 Mod. 23 PH.16
2022-0358008 Mod. 27 PH. 20, 2022-0359120 Mod. 28 PH. 21
2022-0359327 Mod. 30 PH. 23, 2022-0359766 Mod. 32 PH. 25
2022-0313909 Mod. 18 PH. 11, 2022-0314550 Mod. 22 PH.15
2022-0357843 Mod. 26 PH. 19, 2022-0359121 Mod. 29 PH. 22
2022-0359328 Mod. 31 PH. 24, 2022-0407184 Mod. 33 PH. 26

98

Ptn. S.E. 1/4, Sec. 15
T.2S., R.7W.

Assessor's Map
Book 0218 Page 07
San Bernardino County

REVISED
11/23/21 RU
03/04/23 GW
03/11/23 GW
04/04/23 RU