

THIS MAP IS FOR THE PURPOSE
OF AD VALOREM TAXATION ONLY.

Ptn. Tract No. 10086, M.B. 139/59-61

City of Ontario
Tax Rate Area
4053

0216 - 41



STATE

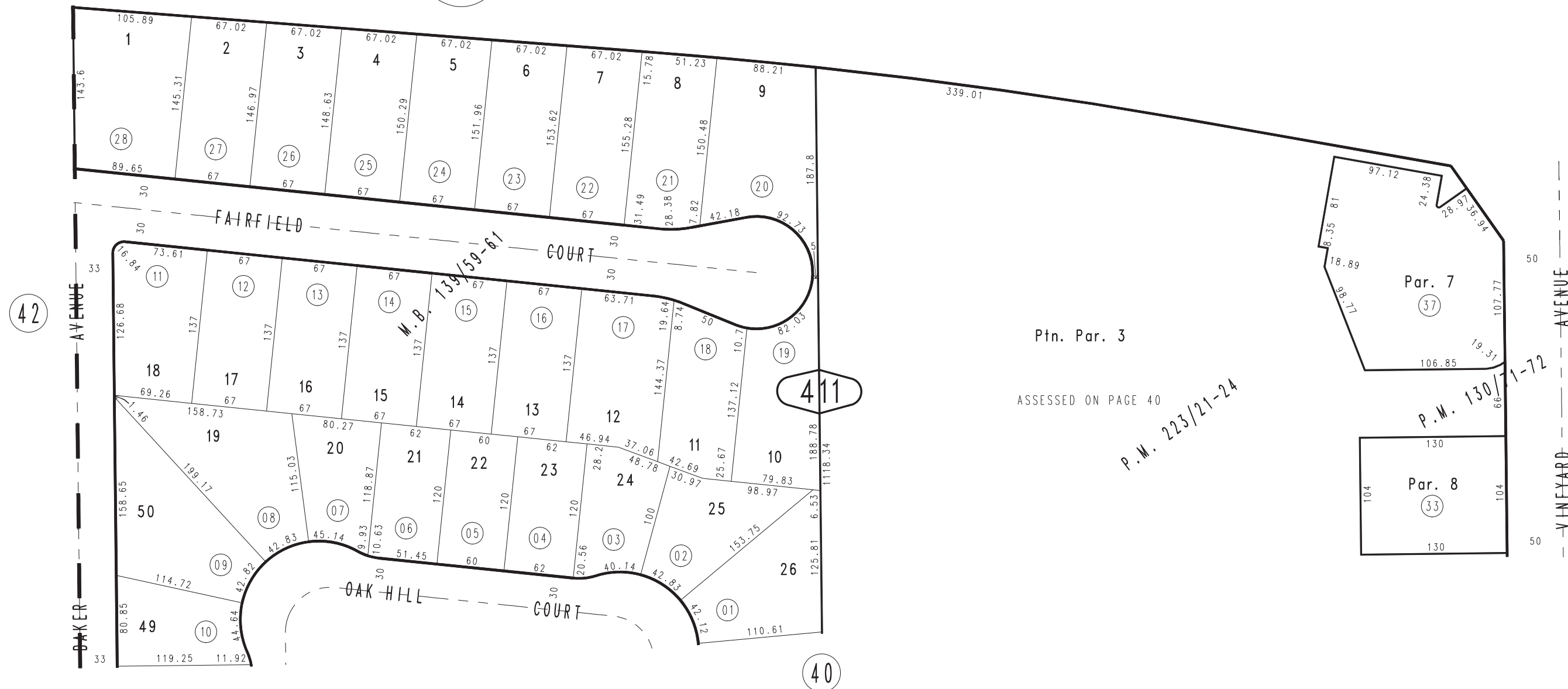
HIGHWAY

NO.

60

1"=100'

0113
28



September 2004

Ptn. Parcel Map No. 17726, P.M. 223/21-24
Ptn. Parcel Map No. 9857, P.M. 130/71-72

Ptn. N.E.1/4, Sec.4
T.2S., R.7W.

Assessor's Map
Book 0216 Page 41
San Bernardino County

REVISED
10/10/07 RM