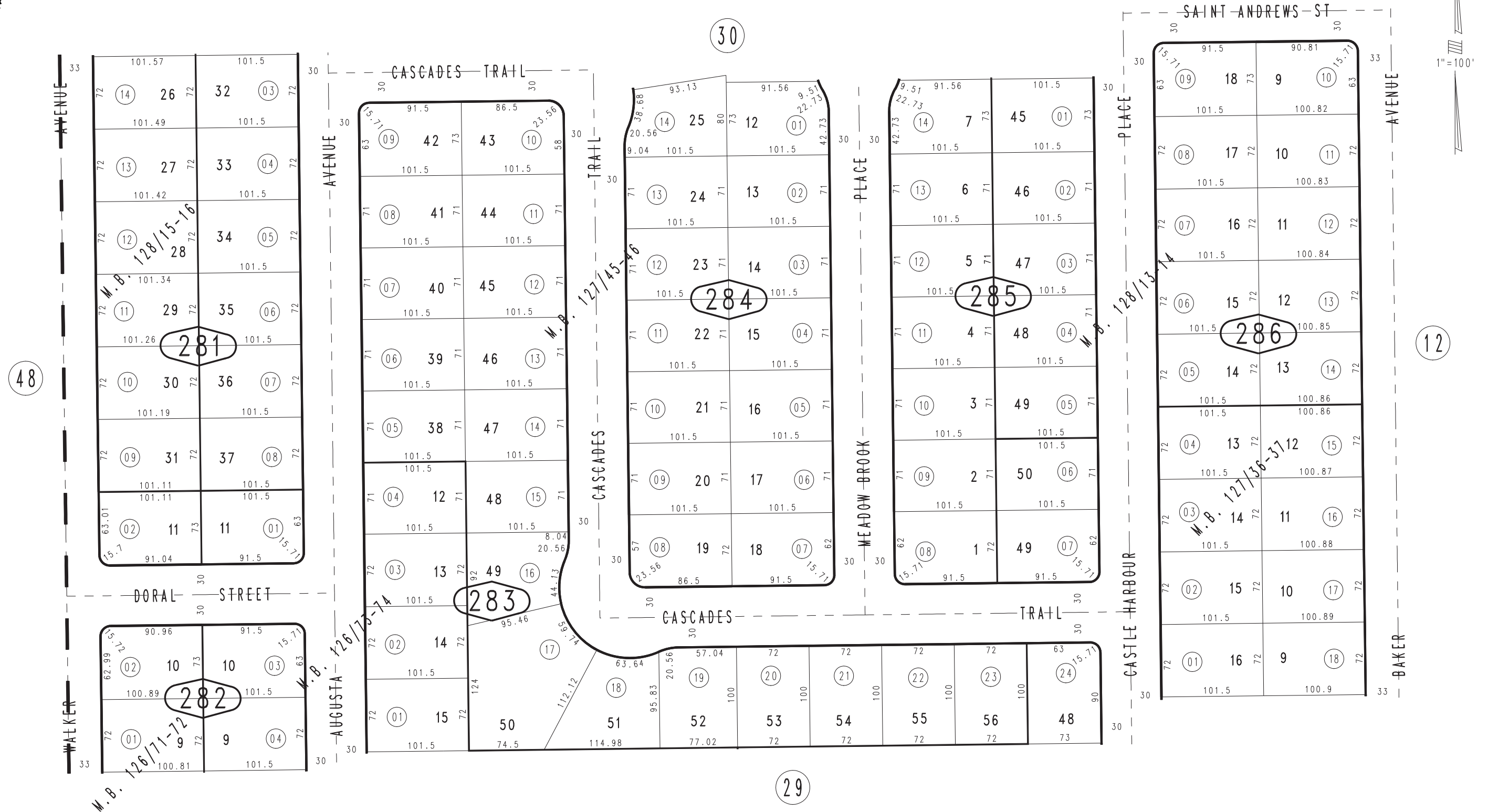


THIS MAP IS FOR THE PURPOSE OF AD VALOREM TAXATION ONLY.

Ptn. Tract No. 8792, M.B. 126/71-72

City of Ontario
Tax Rate Area
4016

0216 - 28



Ptn. Tract No. 8739, M.B. 128/15-16
 Ptn. Tract No. 9266, M.B. 128/13-14
 Ptn. Tract No. 8794, M.B. 127/45-46
 Ptn. Tract No. 8793, M.B. 127/36-37
 Ptn. Tract No. 8791, M.B. 126/73-74

September 2004

Ptn. S.E.1/4, Sec.4
T.2S.,R.7W.

Assessor's Map
Book 0216 Page 28
San Bernardino County

REVISED