

THIS MAP IS FOR THE PURPOSE
OF AD VALOREM TAXATION ONLY.

Ptn. S.W.1/4 Sec.36, T.1S.,R.7.W., S.B.B.&M.
C.S. 1241 (28)

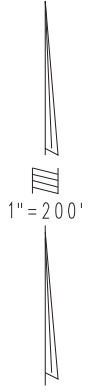
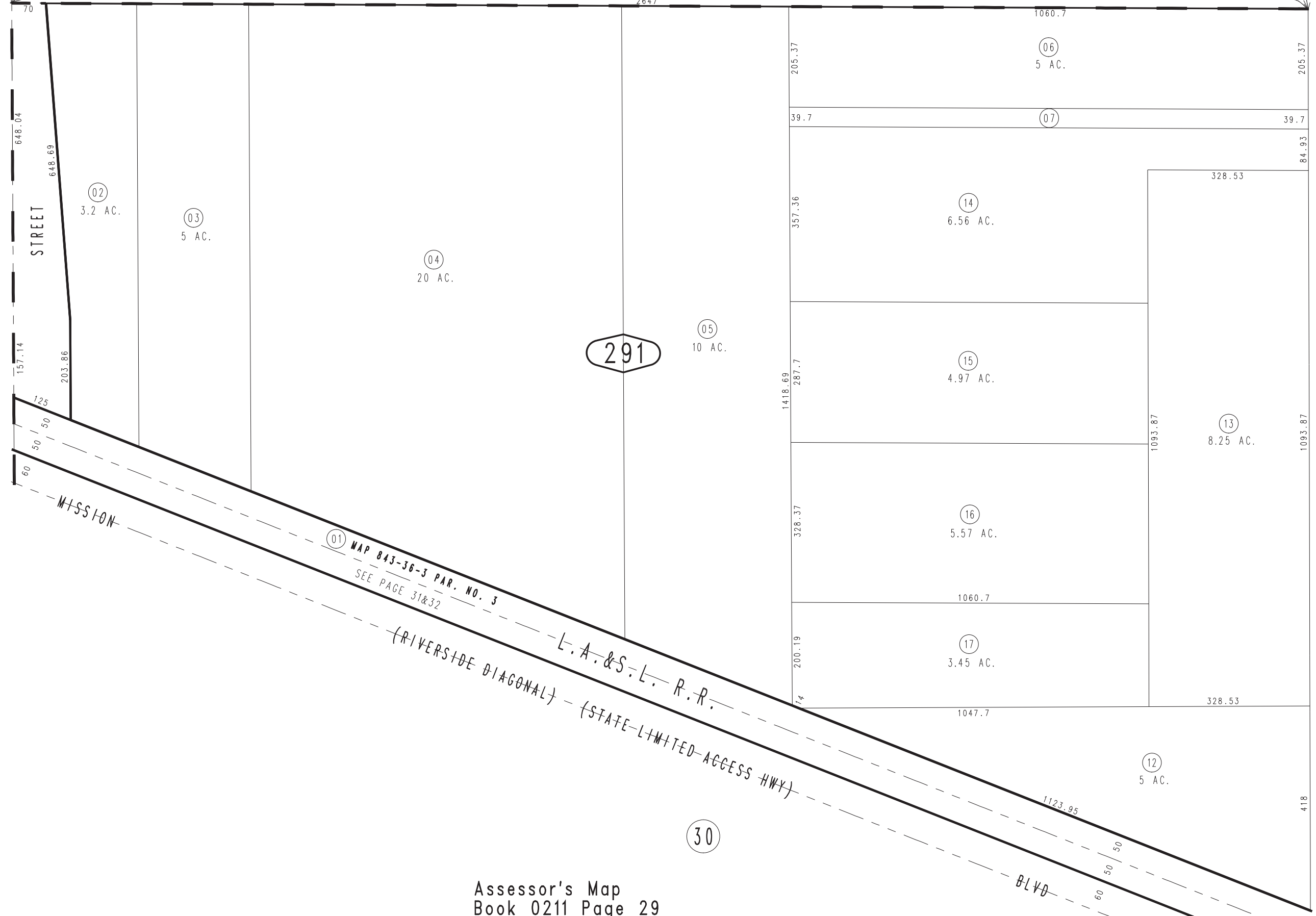
City of Ontario
Tax Rate Area
4063

0211 - 29



W.1/4 COR. SEC.36
T.1S.,R.7W.

CENTER SEC.36 T.1S.,R.7W.



(01) MAP 843-36-3 PAR. NO. 3
SEE PAGE 31&32

(RIVERSIDE DIAGONAL) - L.A. & S.L. R.R. - (STATE-LIMITED ACCESS HWY)

BLVD

Assessor's Map
Book 0211 Page 29
San Bernardino County