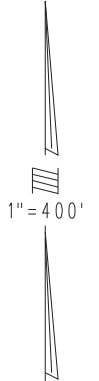
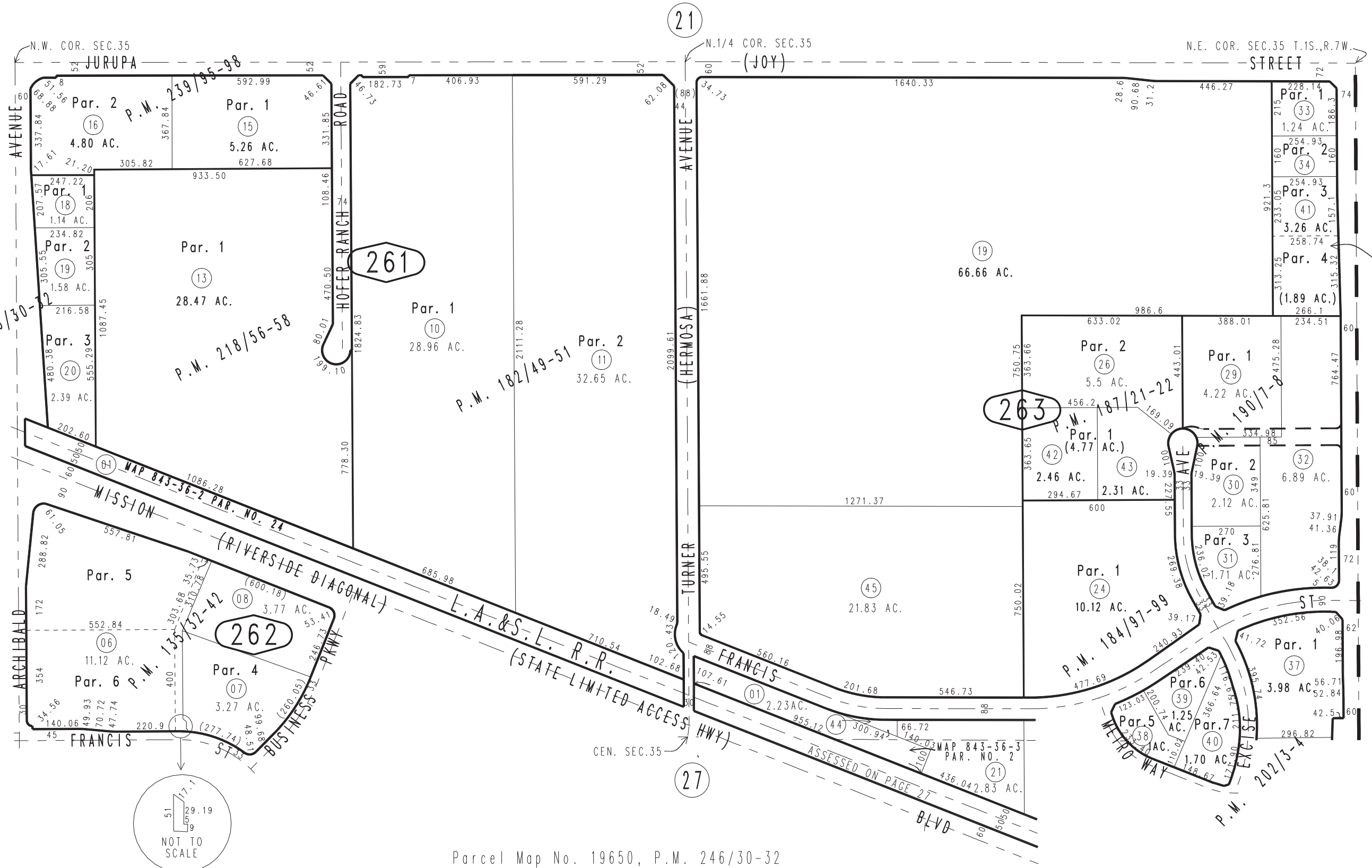


THIS MAP IS FOR THE PURPOSE OF AD VALOREM TAXATION ONLY.

N.1/2 Sec.35, & Ptn. S.1/2 Sec.35, T.1S.,R.7W., S.B.B.&M.

City of Ontario  
Tax Rate Area  
4004

0211 - 26



P.M. 192/19-20

0113  
27

24

28

NOT TO SCALE

- Parcel Map No. 19650, P.M. 246/30-32
- Parcel Map No. 19342, P.M. 239/95-98
- Ptn. Parcel Map No. 18024, P.M. 218/56-58
- Ptn. Parcel Map No. 14860-4, P.M. 202/3-4
- Parcel Map No. 15528, P.M. 192/19-20
- Parcel Map No. 14860-3, P.M. 190/7-8

- Parcel Map No. 14860-2, P.M. 187/21-22
- Parcel Map No. 14860-1, P.M. 184/97-99
- Parcel Map No. 14850, P.M. 182/49-51
- Ptn. Parcel Map No. 11181, P.M. 135/32-42

Assessor's Map  
Book 0211 Page 26  
San Bernardino County

REVISED  
08/15/14 RU  
12/23/15 RU  
08/24/16 RU