

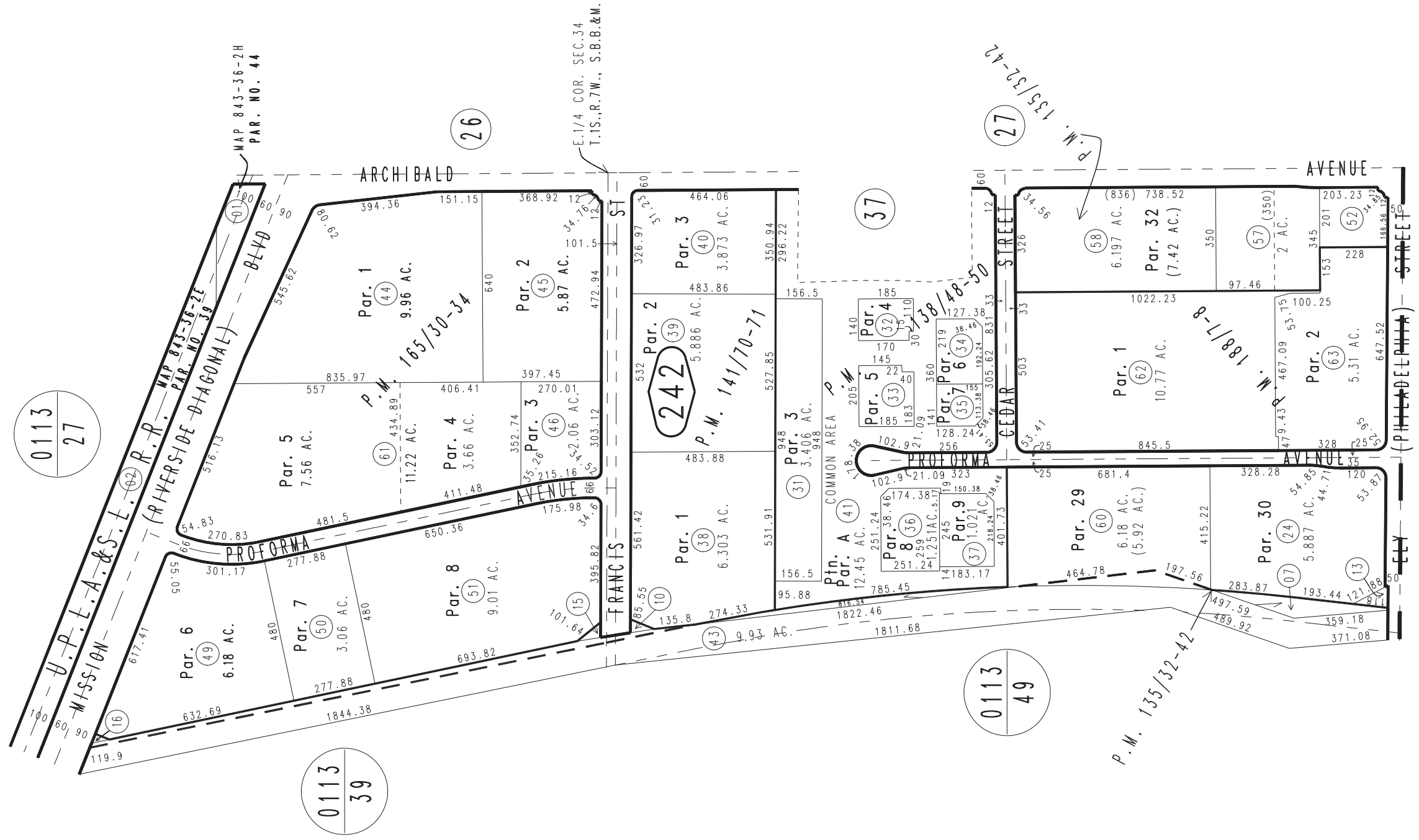
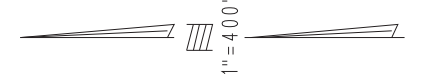
THIS MAP IS FOR THE PURPOSE  
OF AD VALOREM TAXATION ONLY.



Ptn. E.1/2 Sec.34, T.1S.,R.7W., S.B.B.&M.

City of Ontario  
Tax Rate Area  
4004

0211 - 24



Parcel Map No. 14918, P.M. 188/7-8  
Parcel Map No. 13870, P.M. 165/30-34  
Parcel Map No. 11209, P.M. 141/70-71  
Ptn. Parcel Map No. 11850, P.M. 138/48-50  
Ptn. Parcel Map No. 11181, P.M. 135/32-42

October 2004

Assessor's Map  
Book 0211 Page 24  
San Bernardino County

REVISED  
03/19/19 GW