

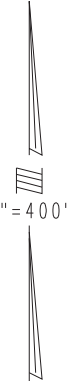
THIS MAP IS FOR THE PURPOSE OF AD VALOREM TAXATION ONLY.

Ptn. Tract No. 2244, M.B. 35/50-56

City of Ontario
Tax Rate Area
4008

0211 - 22

0210
21



1" = 400'

N.W. COR. SEC. 25
T.1S., R.7W.

N.E. COR. SEC. 25
T.1S., R.7W.

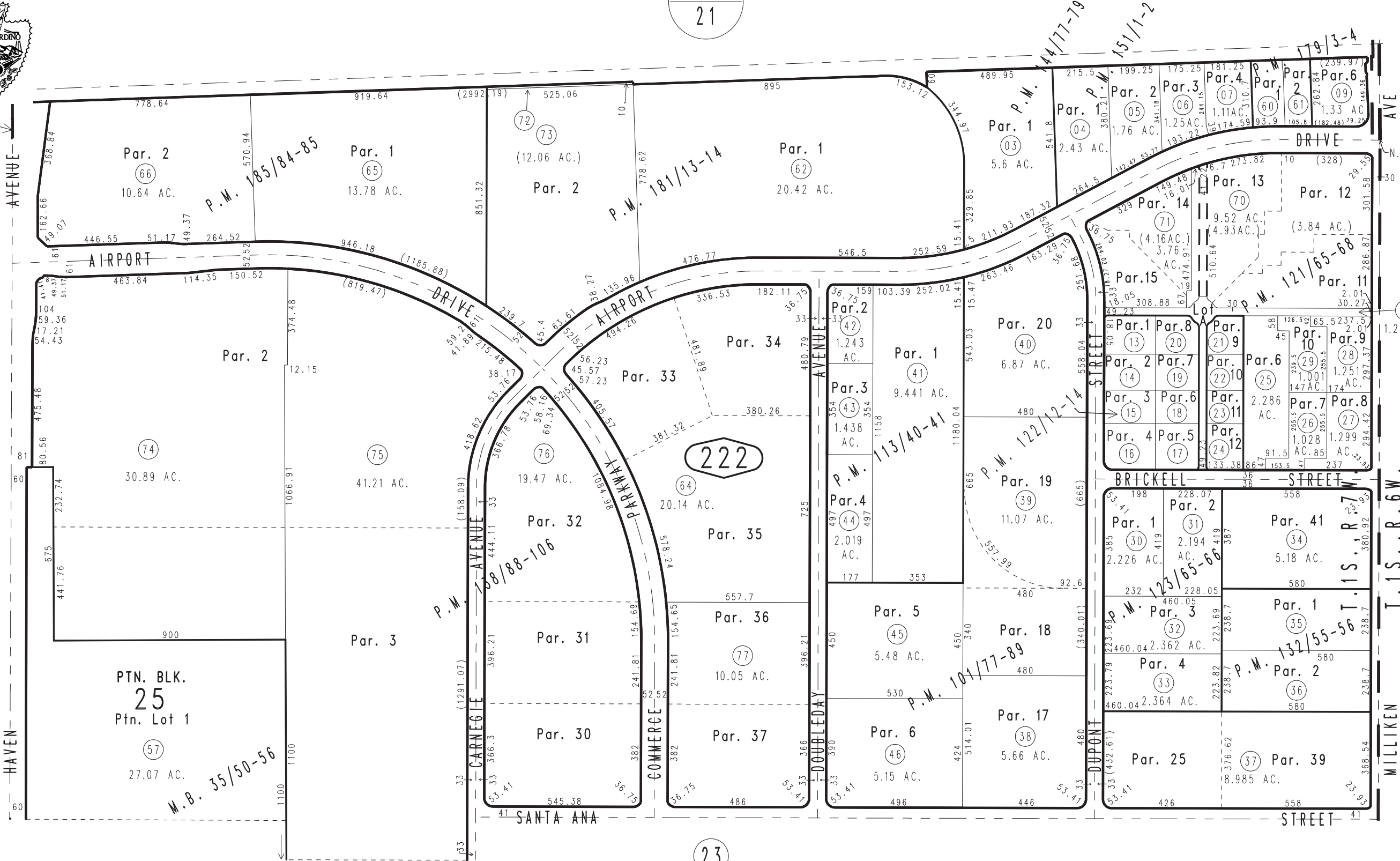
0238
18

0238
19

20

222

23



Parcel Map No. 10904, P.M. 132/55-56
 Parcel Map No. 10675, P.M. 123/65-66
 Parcel Map No. 10457, P.M. 122/12-14
 Ptn. Parcel Map No. 10098, P.M. 121/65-68
 Parcel Map No. 9869, P.M. 113/40-41
 Ptn. Parcel Map No. 8776, P.M. 101/77-89

Parcel Map No. 15162, P.M. 185/84-85
 Parcel Map No. 14914, P.M. 181/13-14
 Parcel Map No. 14630, P.M. 179/3-4
 Ptn. Parcel Map No. 12458, P.M. 151/1-2
 Ptn. Parcel Map No. 12274, P.M. 144/77-79
 Ptn. Parcel Map No. 10112, P.M. 138/88-106

Ptn. N.1/2, Sec. 25
T.1S., R.7W.

Assessor's Map
Book 0211 Page 22
San Bernardino County

October 2004

REVISED
04/16/24 RU