

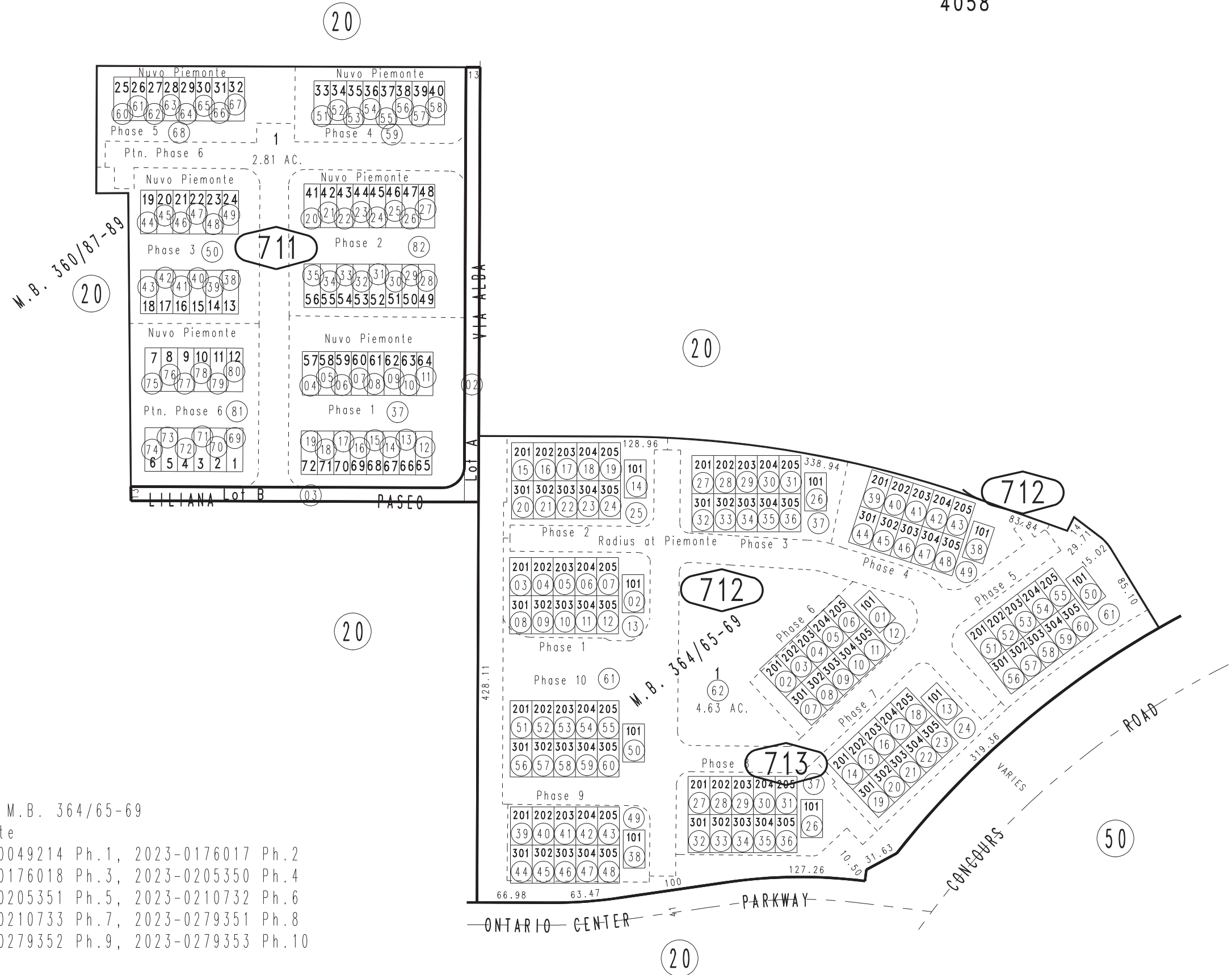
THIS MAP IS FOR THE PURPOSE
OF AD VALOREM TAXATION ONLY.



Tract No. 20308, M.B. 360/87-89

City of Ontario
Tax Rate Area
4058

0210 - 71



Tract No. 20303, M.B. 364/65-69
Radius at Piemonte
Condo Plan 2023-0049214 Ph. 1, 2023-0176017 Ph. 2
Condo Plan 2023-0176018 Ph. 3, 2023-0205350 Ph. 4
Condo Plan 2023-0205351 Ph. 5, 2023-0210732 Ph. 6
Condo Plan 2023-0210733 Ph. 7, 2023-0279351 Ph. 8
Condo Plan 2023-0279352 Ph. 9, 2023-0279353 Ph. 10

Nuvo Piemonte
Condo Plan 2021-0571612 Ph. 1, 2021-0571613 Ph. 2,
Condo Plan 2022-0101465 Ph. 3, 2022-0101466 Ph. 4
Condo Plan 2022-0195201 Ph. 5, 2022-0195202 Ph. 6

Ptn. N.1/2, Sec. 24
T.1S., R.7W.

Assessor's Map
Book 0210 Page 71
San Bernardino County

REVISED
08/18/22 GW
03/23/23 RU
11/13/23 KC
01/31/24 KC