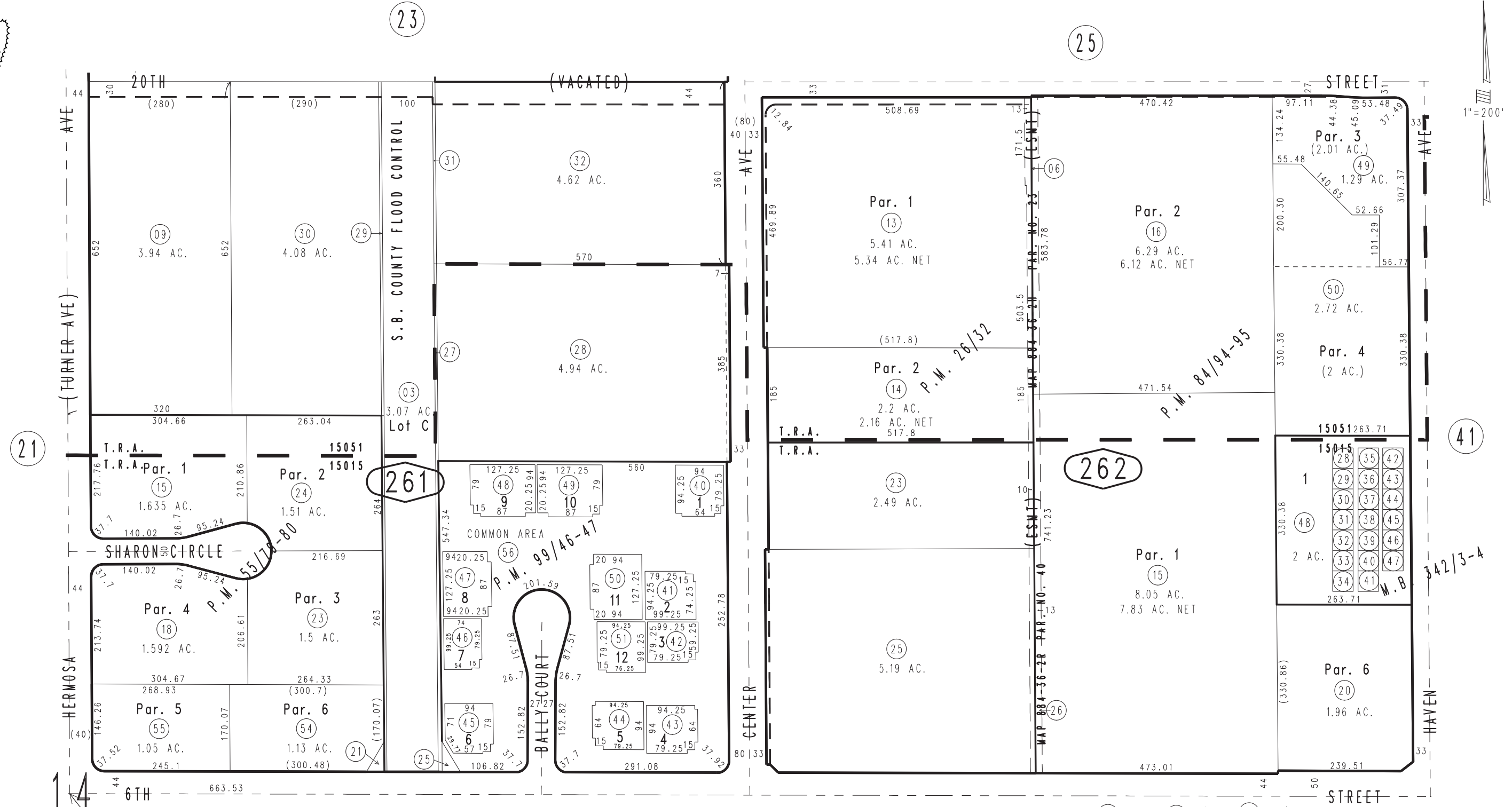


THIS MAP IS FOR THE PURPOSE OF AD VALOREM TAXATION ONLY.



Ptn. North Cucamonga
M.B. 13/15

City of Rancho Cucamonga 0209-26
Tax Rate Area
15051 15015



SEC. 14
T. 1S., R. 7W.

0210
07

28	100	35	210	42	301
29	101	36	220	43	320
30	102	37	225	44	330
31	103	38	230	45	340
32	105	39	240	46	350
33	108	40	250	47	360
34	120	41	260		

Tract No. 19932, M.B. 342/3-4
Parcel Map No. 9302, P.M. 99/46-47, Condo Plan 85-262764
Ptn. Parcel Map No. 7731, P.M. 84/94-95
Ptn. Parcel Map No. 5499, P.M. 55/79-80
Parcel Map No. 1892, P.M. 26/32

Ptn. N.E.1/4, Sec. 14
T.1S., R.7W.

Assessor's Map
Book 0209 Page 26
San Bernardino County

REVISED
11/14/18 RU
08/12/20 KC
12/28/20 KA