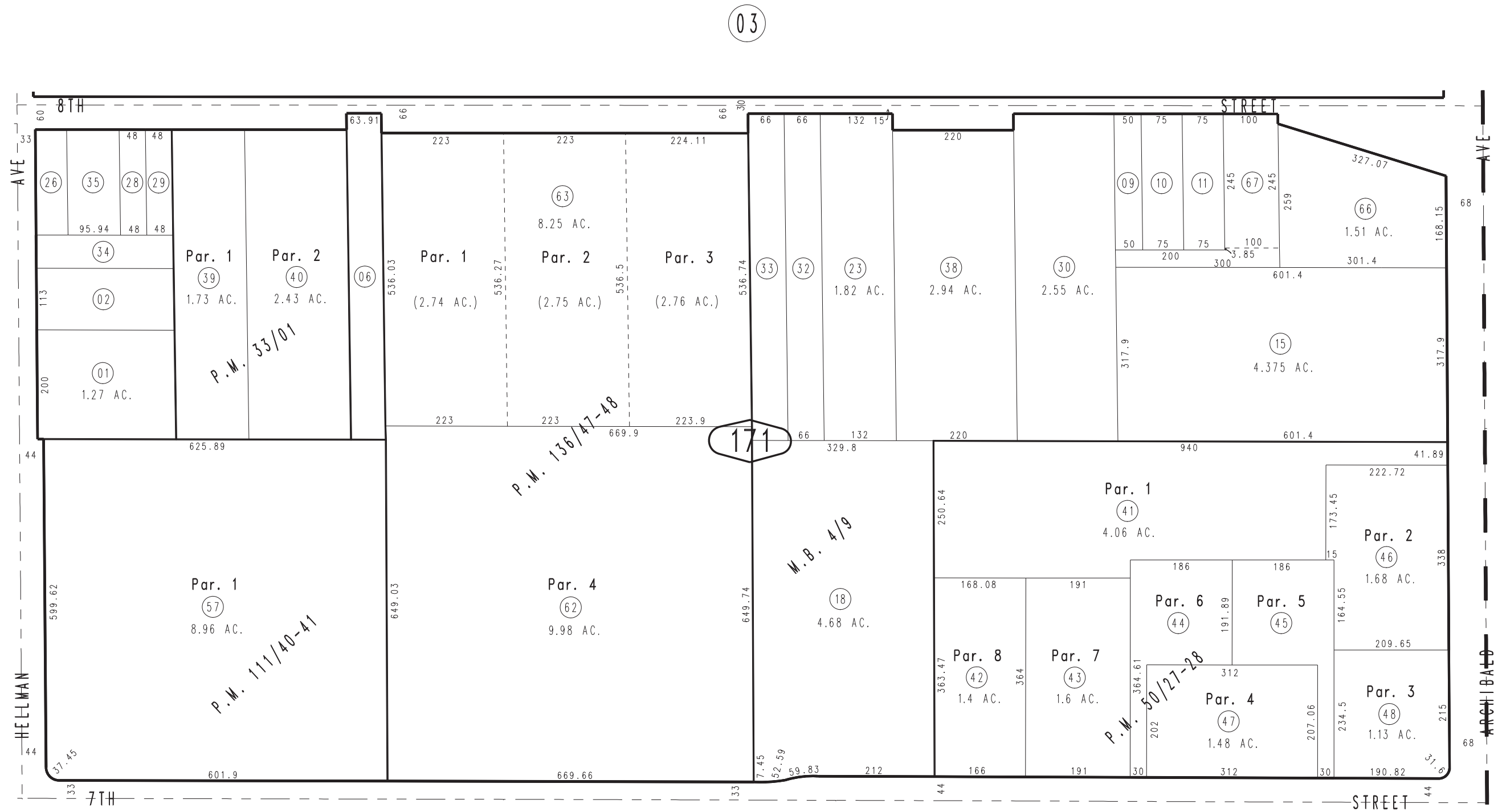
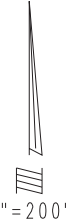


THIS MAP IS FOR THE PURPOSE
OF AD VALOREM TAXATION ONLY.

Ptn. N.E.1/4, Sec.15, T.1S.,R.7W., S.B.B.&M.

City of Rancho Cucamonga 0209-17
Tax Rate Area
15013



Parcel Map No. 10981, P.M. 136/47-48
 Ptn. Parcel Map No. 9481, P.M. 111/40-41
 Parcel Map No. 4912, P.M. 50/27-28
 Parcel Map No. 3370, P.M. 33/01
 Ptn. Cucamonga Fruit Lands, M.B. 4/9

September 2004

Assessor's Map
 Book 0209 Page 17
 San Bernardino County

REVISED
 10/01/19 GW
 10/07/19 GW
 11/06/19 GW