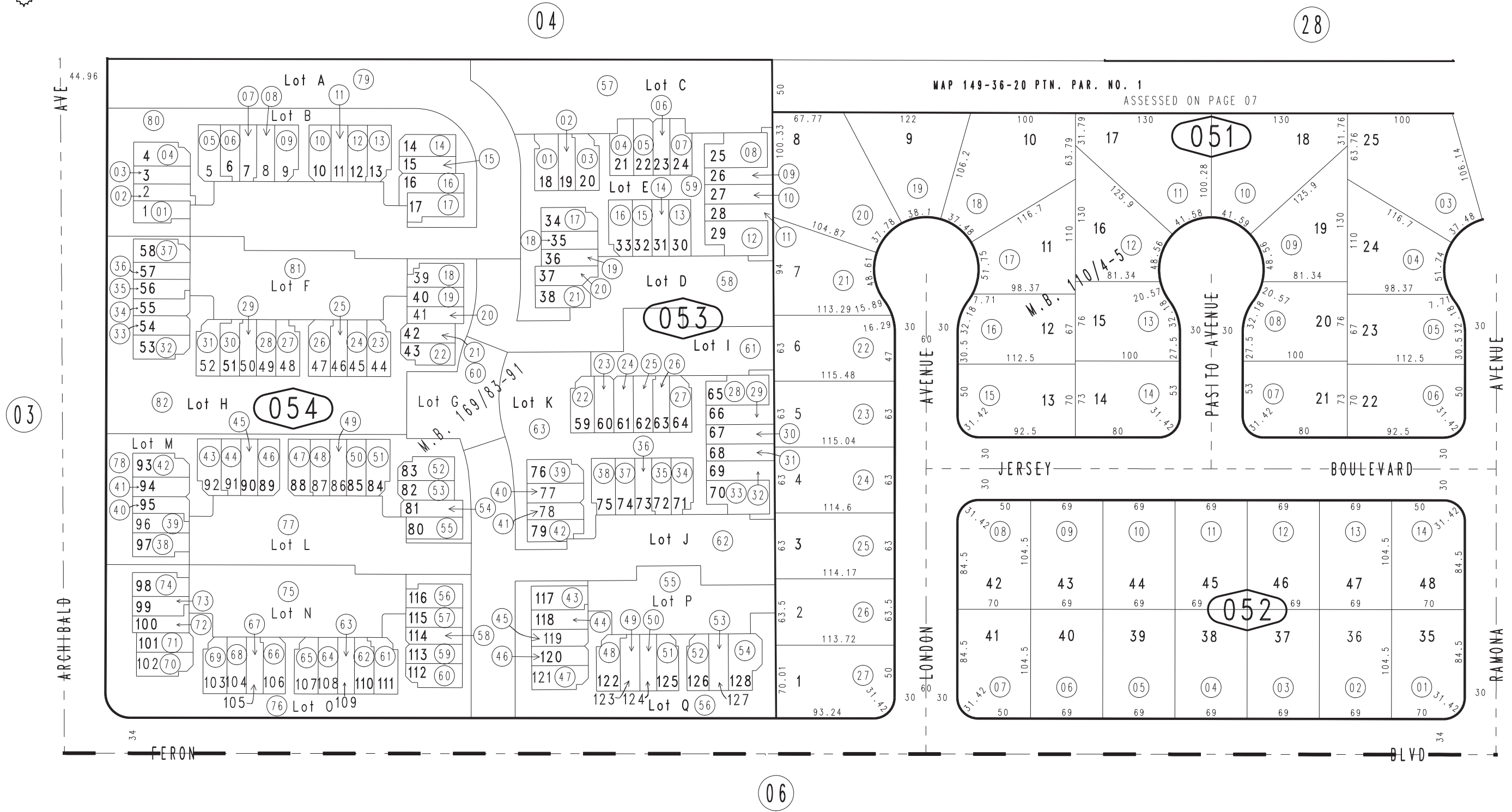


THIS MAP IS FOR THE PURPOSE OF AD VALOREM TAXATION ONLY.

Ptn. S.W.1/4, Sec.11, T.1S.,R.7W., S.B.B.&M.

City of Rancho Cucamonga 0209-05  
Tax Rate Area  
15013



September 2004

Tract No. 12090, M.B. 166/30-38 = Amended Map M.B. 169/83-91  
Ptn. Tract No. 4454, M.B. 110/4-5

Assessor's Map  
Book 0209 Page 05  
San Bernardino County

REVISED  
08/04/11 RM