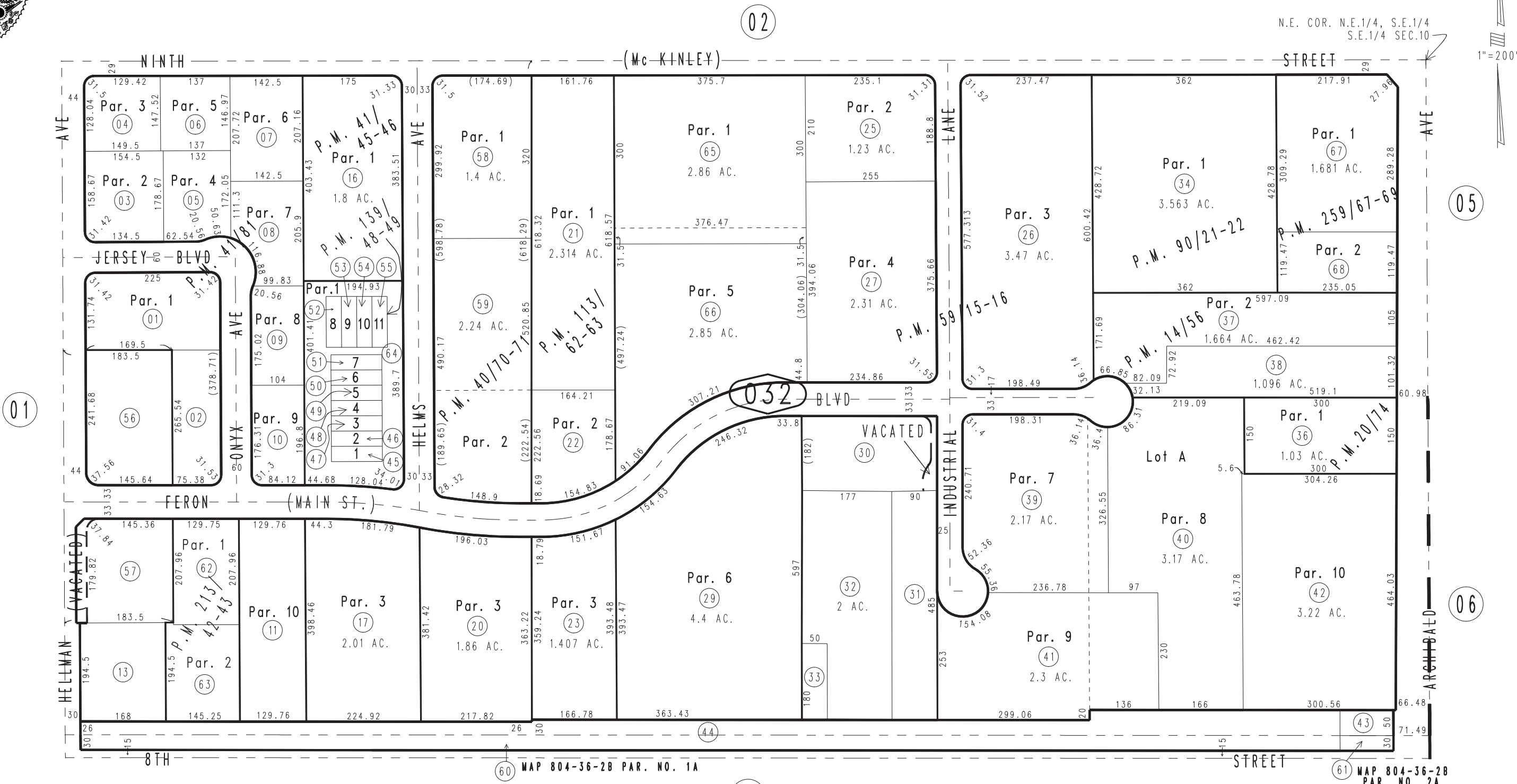


THIS MAP IS FOR THE PURPOSE OF AD VALOREM TAXATION ONLY.

Ptn. S.E.1/4, Sec.10, T.1S.,R.7W., S.B.B.&M.

City of Rancho Cucamonga 0209-03
Tax Rate Area
15013



- Ptn. Parcel Map No. 8653, P.M. 90/21-22
- Ptn. Parcel Map No. 4511, P.M. 56/37-38, Amended Map P.M. 59/15-16
- Parcel Map No. 4320, P.M. 41/81
- Ptn. Parcel Map No. 4499, P.M. 41/45-46
- Parcel Map No. 4366, P.M. 40/70-71
- Parcel Map No. 2265, P.M. 20/74
- Parcel Map No. 1528, P.M. 14/56
- Parcel Map No. 20164, P.M. 259/67-69
- Parcel Map No. 17063, P.M. 213/42-43
- Parcel Map No. 12057, P.M. 139/48-49
- Parcel Map No. 10366, P.M. 113/62-63
- Condominium Plan, O.R. 89-235285

REVISED
02/23/23 KA
03/07/23 KA