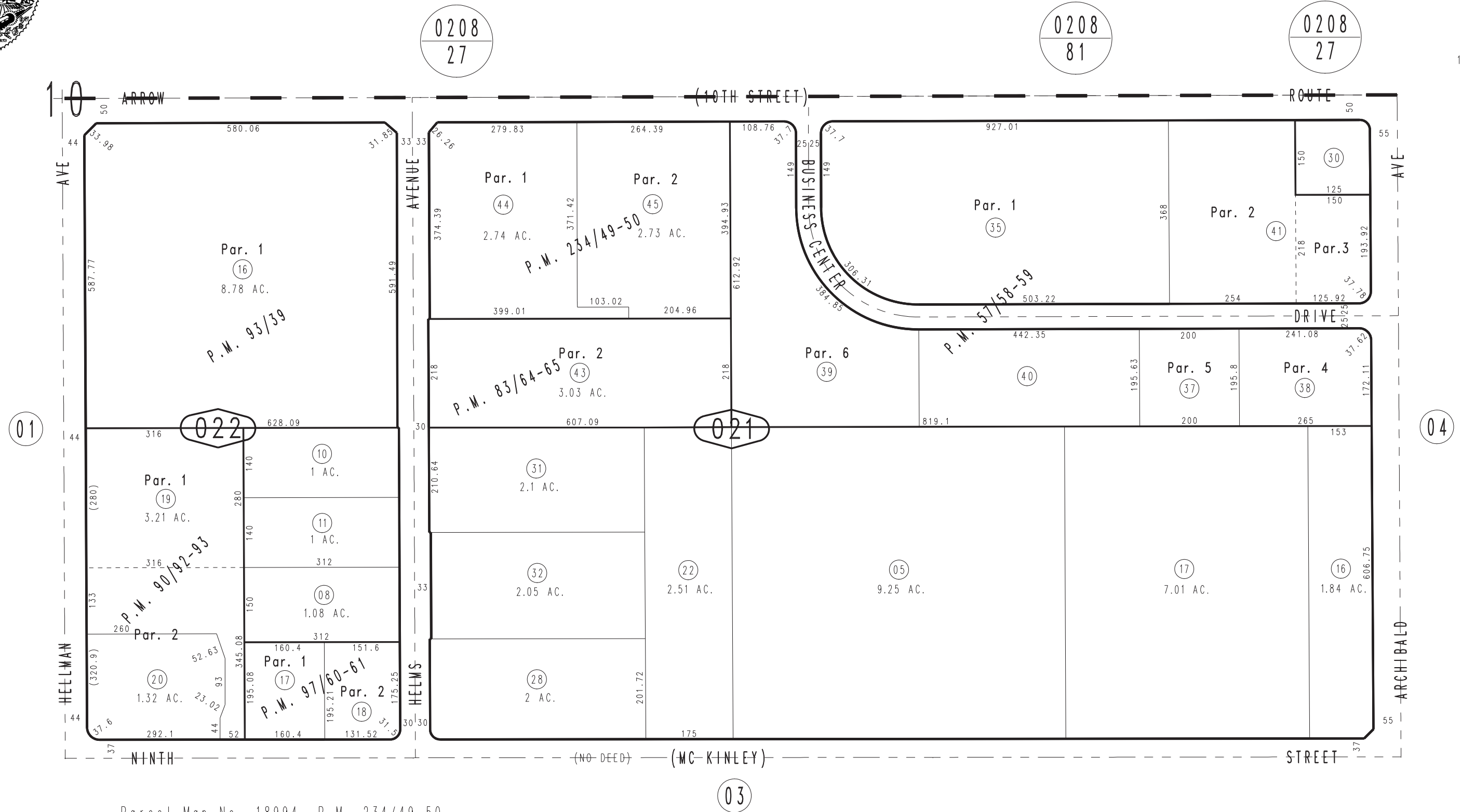


THIS MAP IS FOR THE PURPOSE
OF AD VALOREM TAXATION ONLY.

Ptn. S.E.1/4, Sec.10, T.1S.,R.7W., S.B.B.&M.

City of Rancho Cucamonga 0209-02
Tax Rate Area
15013



Parcel Map No. 18994, P.M. 234/49-50
 Parcel Map No. 8060, P.M. 97/60-61
 Parcel Map No. 8280, P.M. 93/39
 Parcel Map No. 8583, P.M. 90/92-93
 Parcel Map No. 7972, P.M. 83/64-65
 Ptn. Parcel Map No. 5684, P.M. 57/58-59

September 2004

Assessor's Map
 Book 0209 Page 02
 San Bernardino County

REVISED
 12/11/19 KA