

THIS MAP IS FOR THE PURPOSE OF AD VALOREM TAXATION ONLY.



Ptn. Sub. Lot 10, Cucamonga Vineyard Tract, M.B. 20/44
Ptn. Cucamonga Vineyard Tract, M.B. 20/41

City of Rancho Cucamonga
Tax Rate Area
15013

0209-01

0208

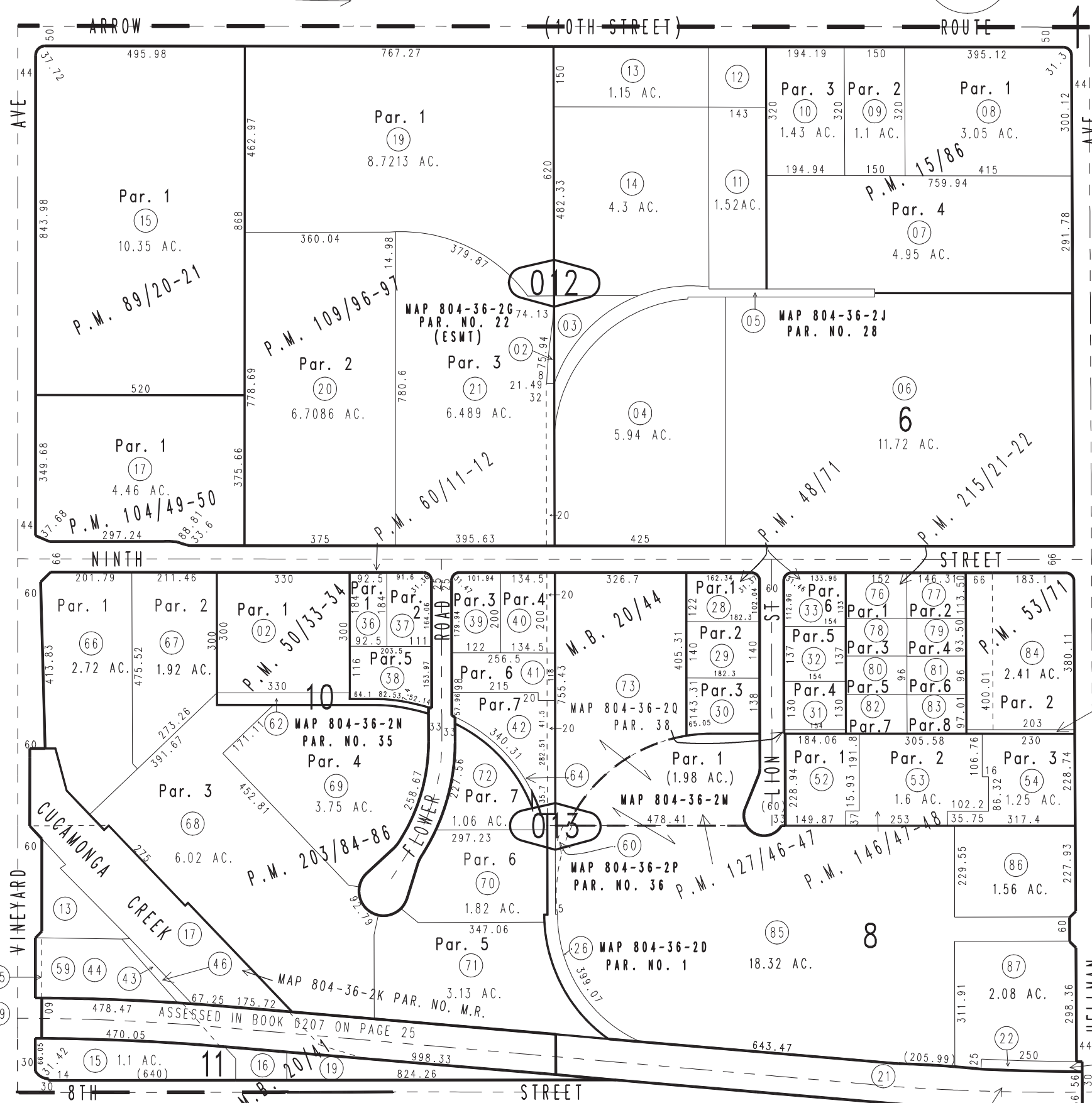
36

T.1S., R.7W.

0208
25

0207
26

0207
27



02

03

Ptn. S.W.1/4, Sec.10
T.1S.,R.7W.

MAP NO. 804-36-020 PAR. NO. 39

- Parcel Map No. 16899, P.M. 215/21-22
- Parcel Map No. 16167, P.M. 203/84-86
- Parcel Map No. 12058, P.M. 146/47-48
- Ptn. Parcel Map No. 9180, P.M. 127/46-47
- Parcel Map No. 9972, P.M. 109/96-97
- Ptn. Parcel Map No. 9537, P.M. 104/49-50
- Ptn. Parcel Map No. 8597, P.M. 89/20-21
- Parcel Map No. 6005, P.M. 60/11-12
- Ptn. Parcel Map No. 4820, P.M. 53/71
- Ptn. Parcel Map No. 5194, P.M. 50/33-34
- Parcel Map No. 4804, P.M. 48/71
- Parcel Map No. 1802, P.M. 15/86

MAP 804-36-2K
PAR. NO. 31 M.R.
MAP 804-36-2K
PAR. NO. 30 M.R.

MAP 804-36-2 PAR. NO. 5A

Assessor's Map
Book 0209 Page 01
San Bernardino County

REVISED
08/14/14 RM-MC