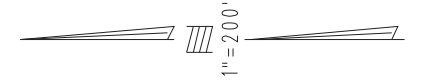


THIS MAP IS FOR THE PURPOSE
OF AD VALOREM TAXATION ONLY.

Ptn. Parcel Map No. 7244, P.M. 76/74-77

City of Rancho Cucamonga 0208-96
Tax Rate Area
15049,15051,15154



1077
42

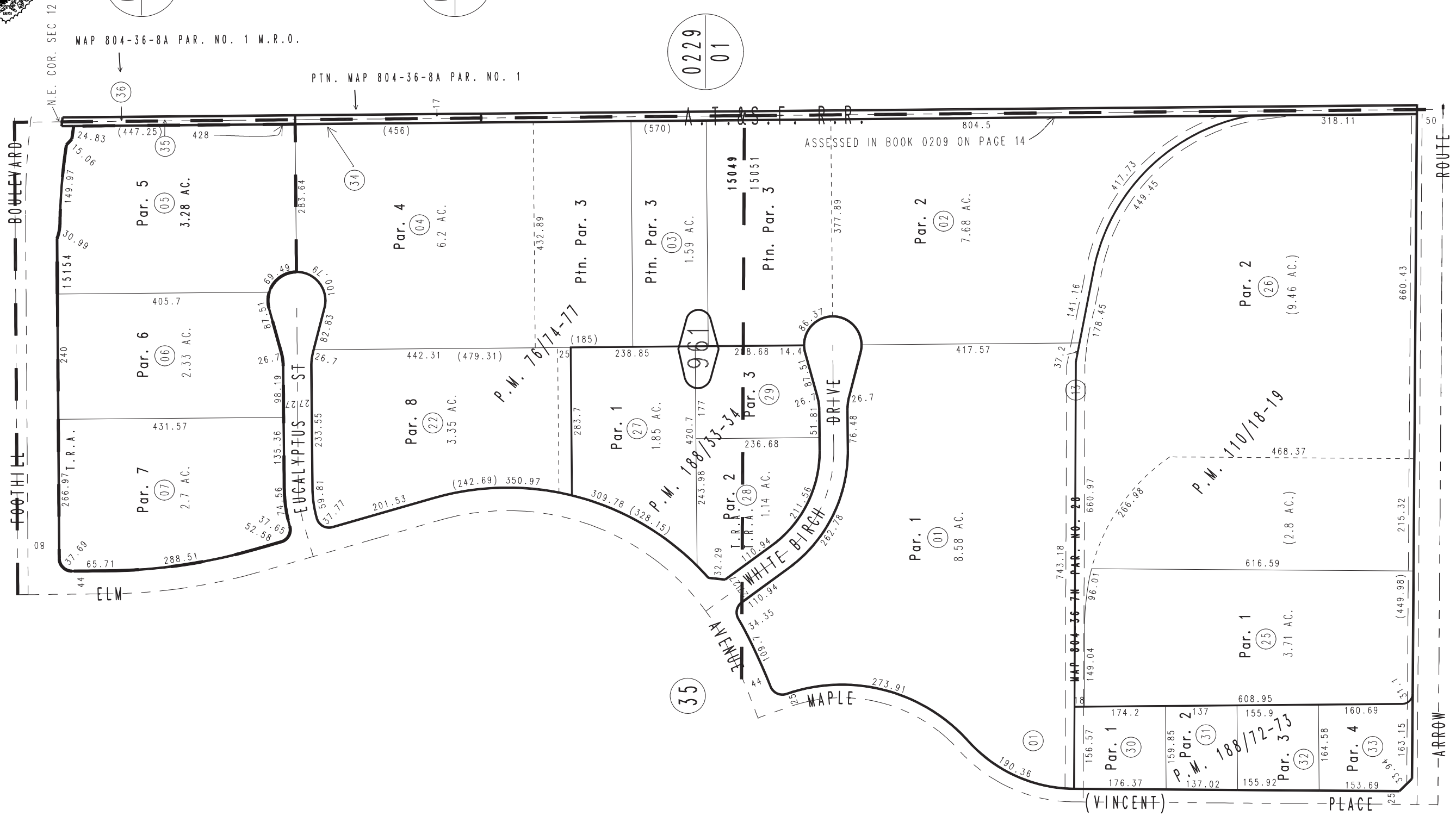
0229
01

0229
43

0229
01

0209
48

0209
47



August 2004

Parcel Map No. 14038, P.M. 188/72-73
Parcel Map No. 15268, P.M. 188/33-34
Parcel Map No. 10007, P.M. 110/18-19

Ptn. N.E.1/4, Sec.12
T.1S.,R.7W.

Assessor's Map
Book 0208 Page 96
San Bernardino County

REVISED
07/19/23 GW