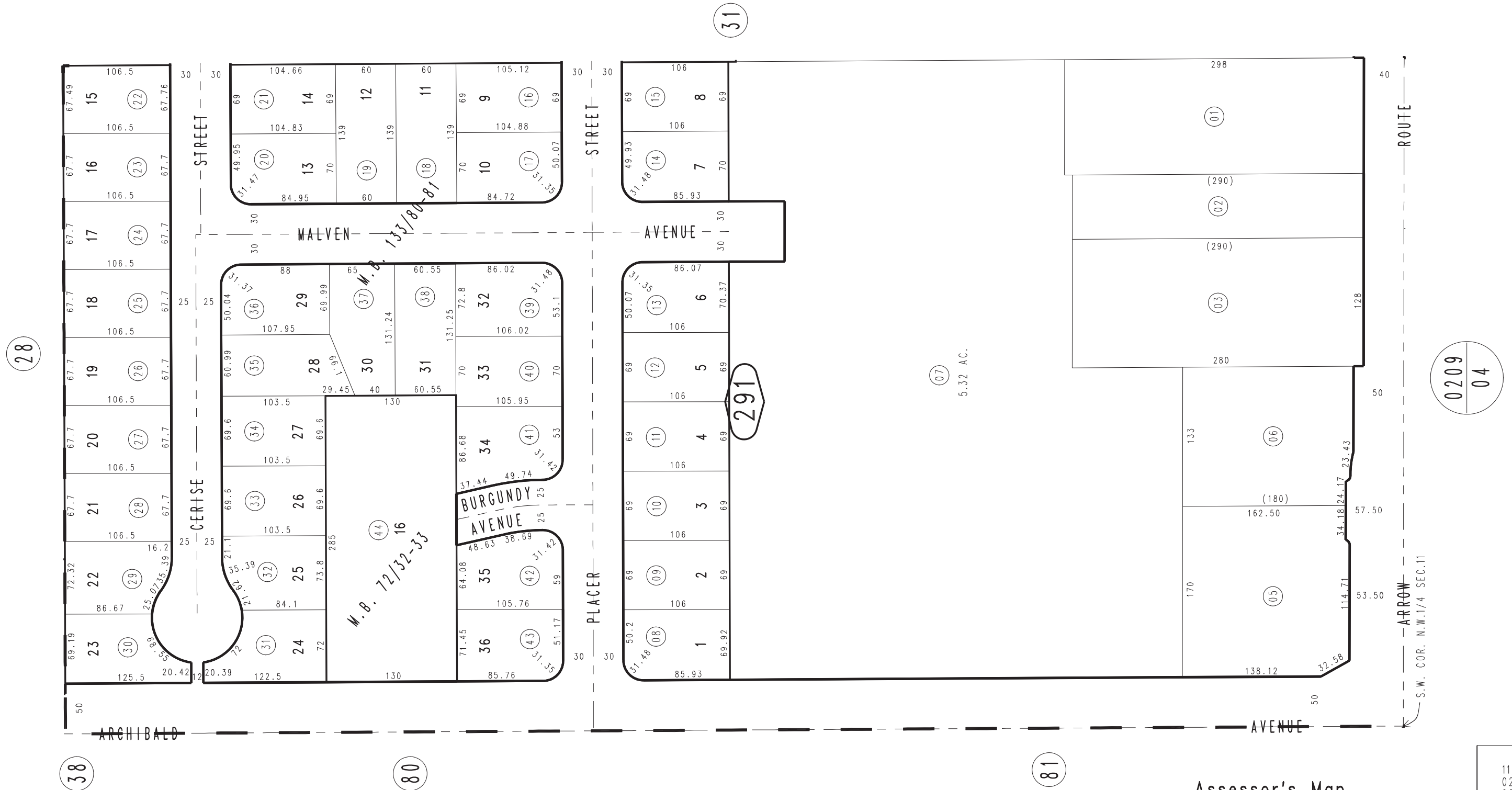


THIS MAP IS FOR THE PURPOSE OF AD VALOREM TAXATION ONLY.

Ptn. N.W.1/4, Sec.11, T.1S.,R.7W., S.B.B.&M.

City of Rancho Cucamonga 0208-29  
Tax Rate Area  
15013



August 2004

Tract No. 9419, M.B. 133/80-81  
Tract No. 5839, M.B. 72/32-33

Assessor's Map  
Book 0208 Page 29  
San Bernardino County

REVISED  
11/24/21 KA  
02/25/22 RU  
03/03/22 RU