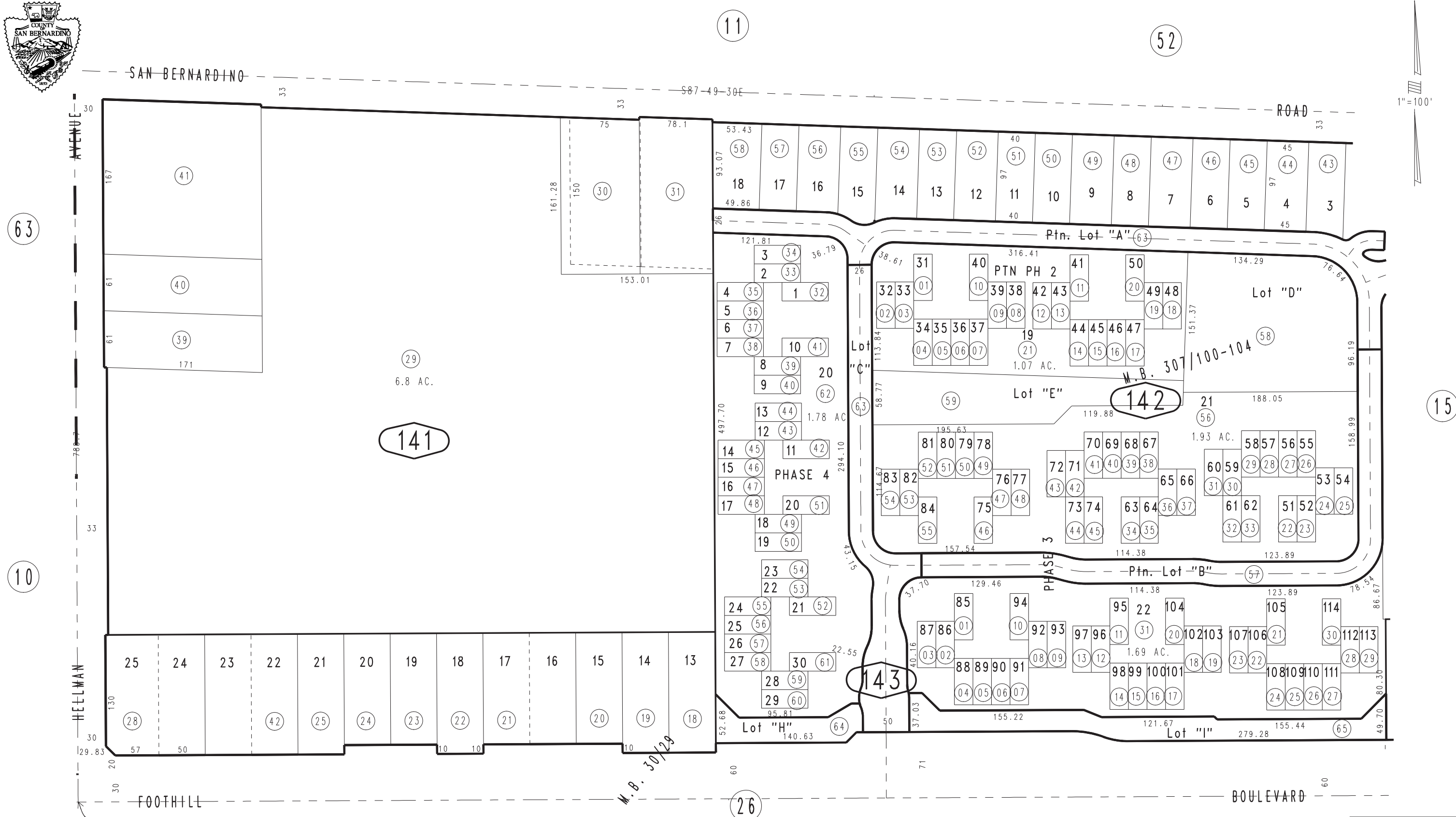


THIS MAP IS FOR THE PURPOSE OF AD VALOREM TAXATION ONLY.

Ptn. S.E.1/4 Sec.3, T.1S.,R.7W., S.B.B.&M.

City of Rancho Cucamonga 0208-14
Tax Rate Area
15049



63

10

11

52

15

26

141

142

143

Ptn. Tract No. 16567, M.B. 307/100-104, Condo Plan 06-0157434, Ptn Ph 2, 06-0167917 Ph 3, 06-0347282 Ph 4
Tract No. 2076, M.B. 30/29

Assessor's Map
Book 0208 Page 14
San Bernardino County

REVISED
10/05/05 GW
06/19/06 GL
11/28/06 BK

August 2004