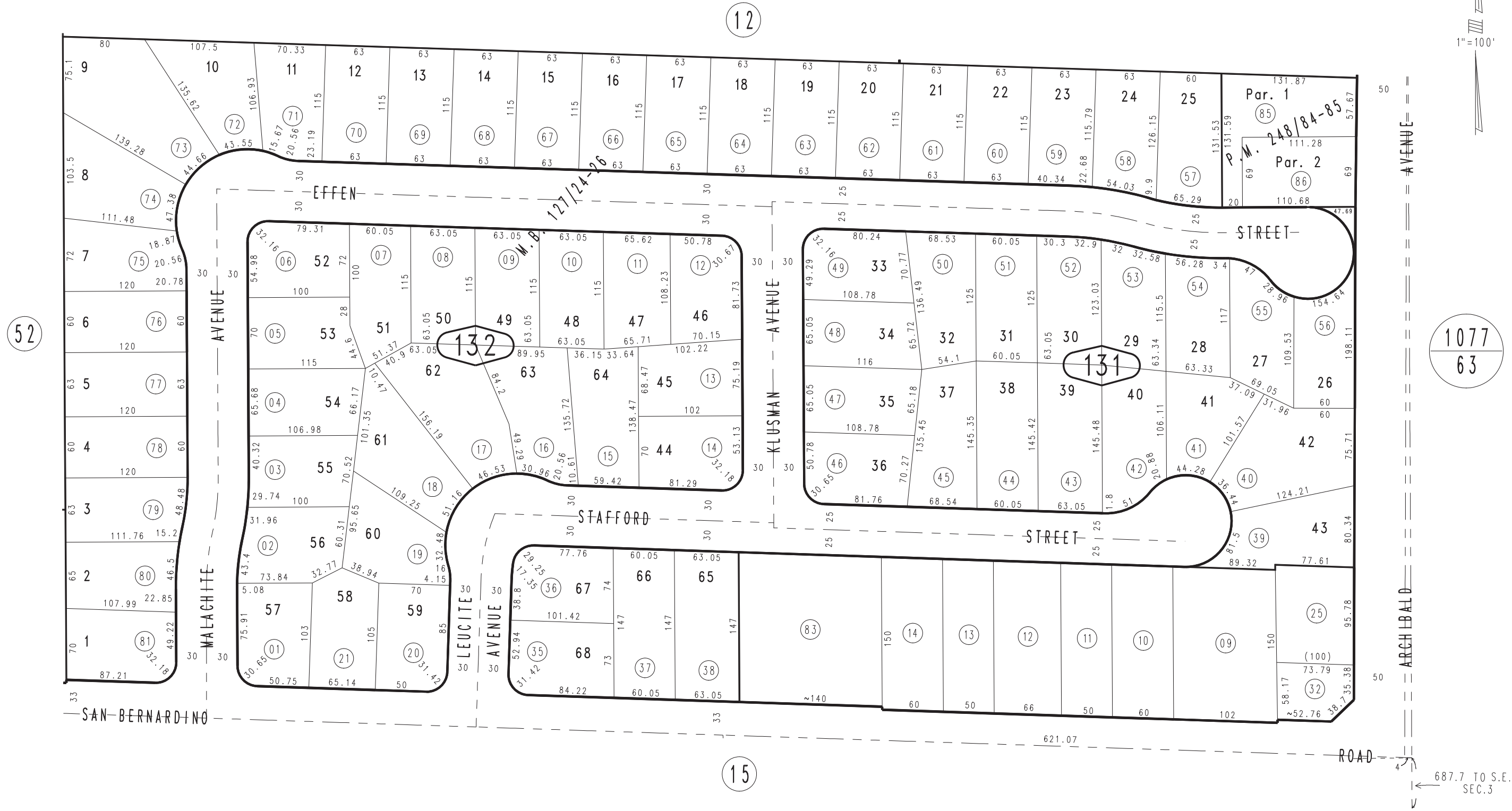
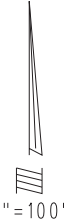


THIS MAP IS FOR THE PURPOSE OF AD VALOREM TAXATION ONLY.

Ptn. S.E.1/4 Sec.3, T.1S.,R.7W., S.B.B.&M.

City of Rancho Cucamonga 0208-13  
Tax Rate Area  
15009



Parcel Map No. 17663, P.M. 248/84-85  
Tract No. 9187, M.B. 127/24-26

Assessor's Map  
Book 0208 Page 13  
San Bernardino County

August 2004

REVISED  
09/21/17 KA

687.7 TO S.E. COR.  
SEC.3