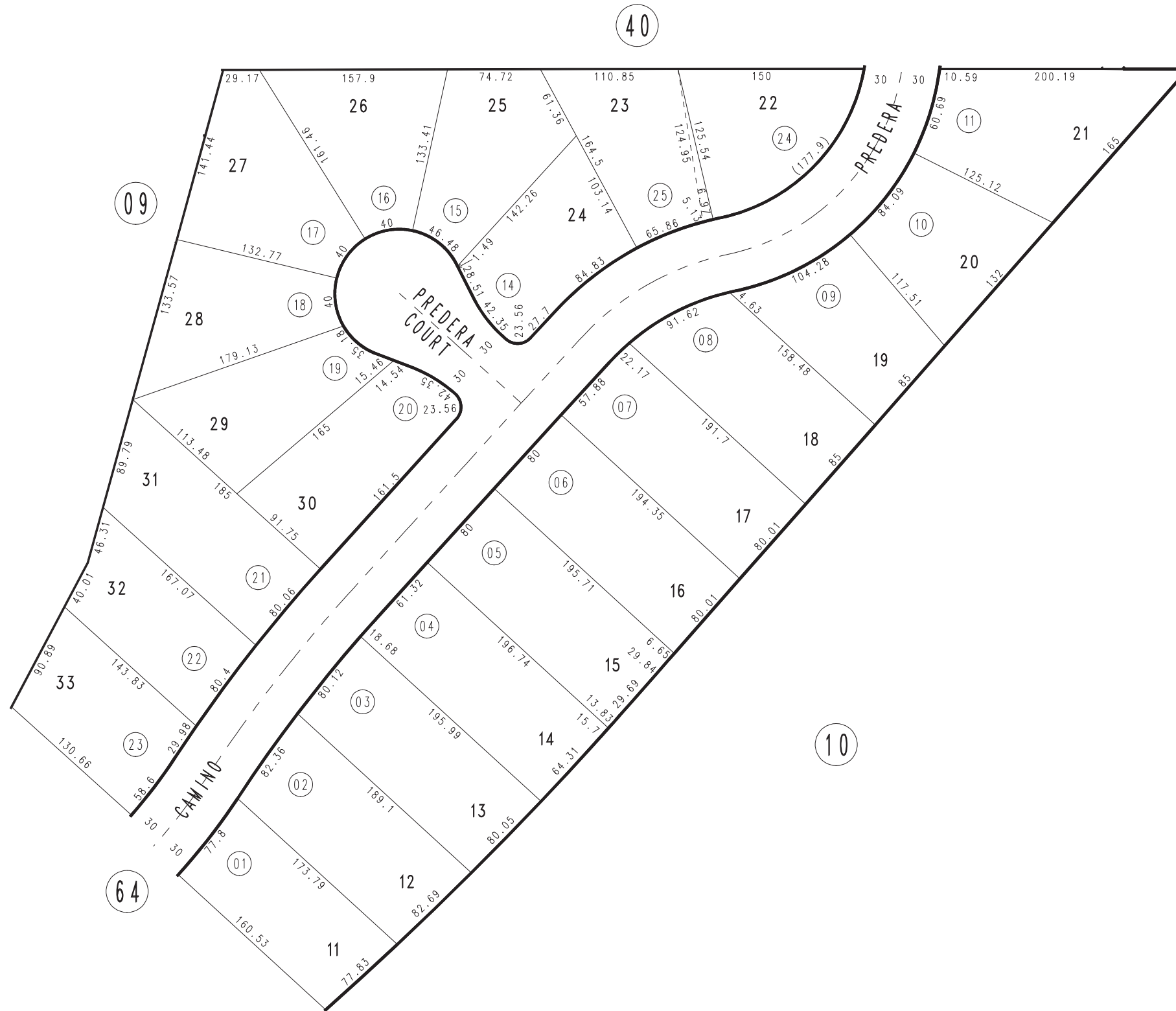


THIS MAP IS FOR THE PURPOSE
OF AD VALOREM TAXATION ONLY.

Ptn. Tract No. 10035, M.B. 179/33-35

City of Rancho Cucamonga
Tax Rate Area
15011

0207-63



July 2004

Ptn. S.E.1/4, Sec.4
T.1S.,R.7W.

Assessor's Map
Book 0207 Page 63
San Bernardino County

REVISED
08/14/14 RM-MC