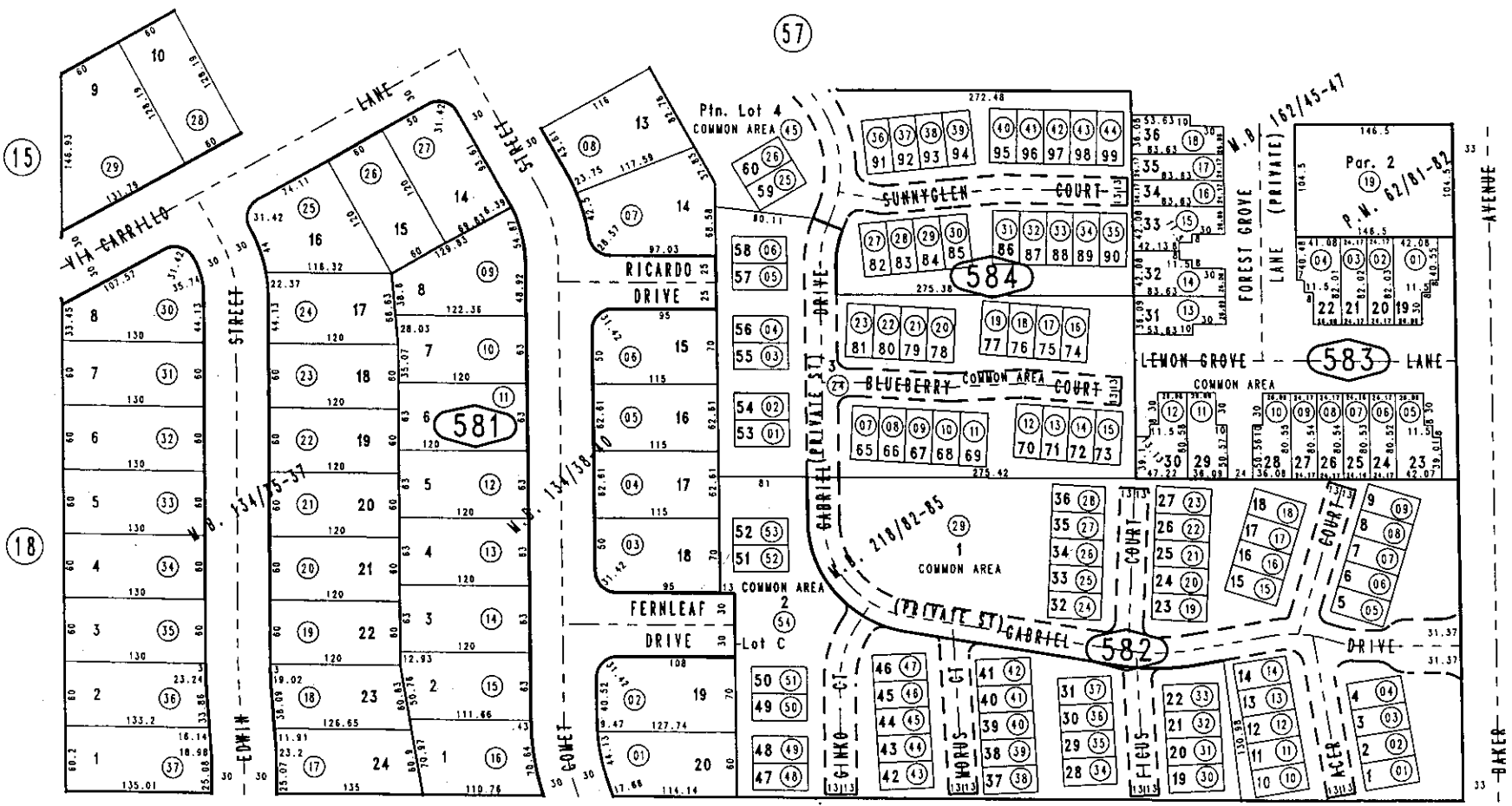


THIS MAP IS FOR THE PURPOSE OF AD VALOREM TAXATION ONLY.

Ptn. Tract No. 9518, M.B. 134/35-37

City of Rancho Cucamonga 0207-58
Tax Rate Area
15009



Ptn. Tract No. 12895, M.B. 218/82-85, Condominium Plan 90-188203
Ptn. Cucamonga Fruit Lands, M.B. 4/9
Ptn. Tract No. 10762, M.B. 162/17-19, (Amending, M.B. 162/45-47)
Ptn. Parcel Map No. 6011, P.W. 62/81-82
Ptn. Tract No. 9519, M.B. 134/38-40

Ptn. N.W.1/4, Sec.9
T.1S.,R.7W.

Assessor's Map
Book 0207 Page 58
San Bernardino County

July 2004

REVISED