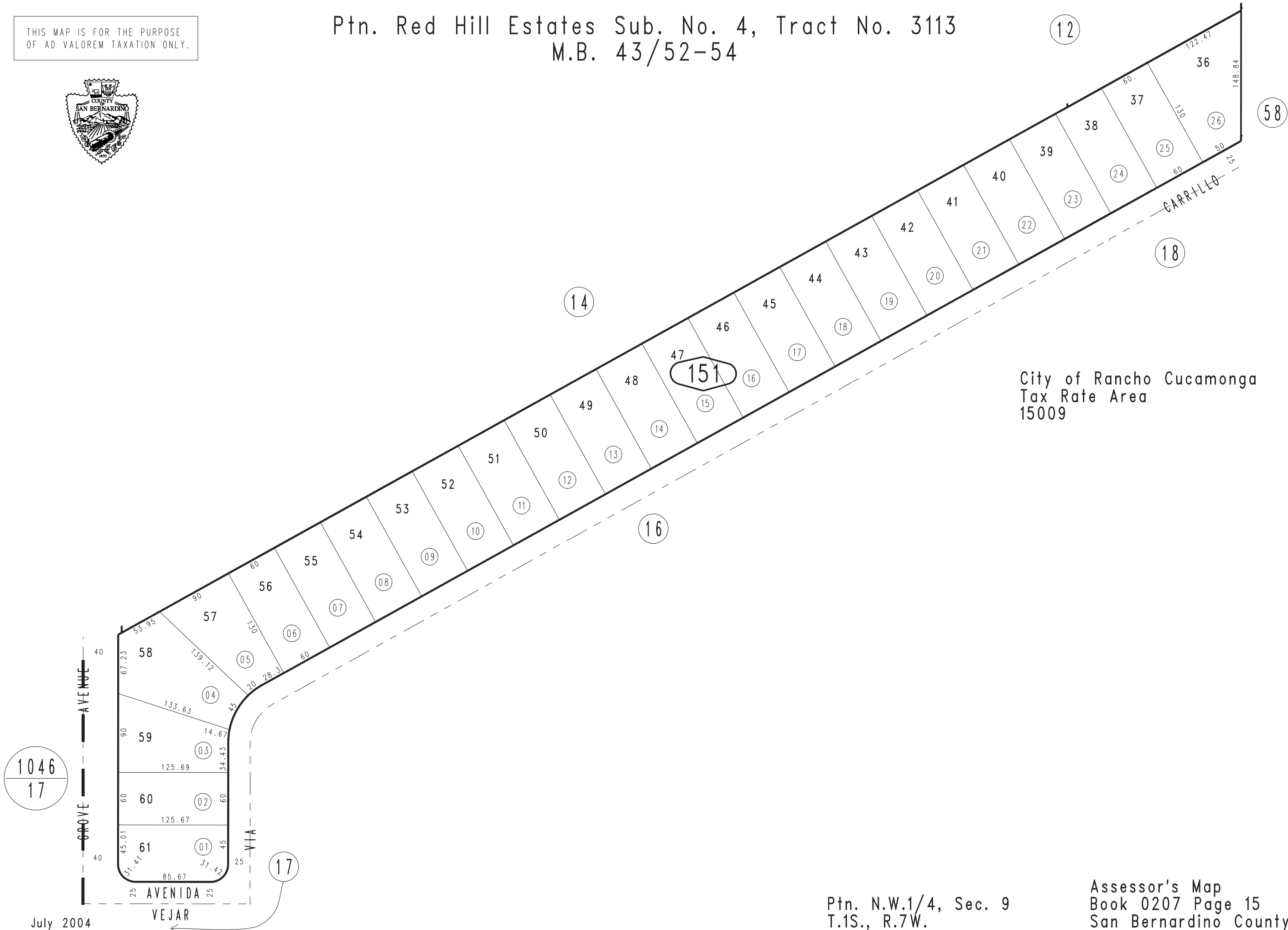


THIS MAP IS FOR THE PURPOSE  
OF AD VALOREM TAXATION ONLY.

Ptn. Red Hill Estates Sub. No. 4, Tract No. 3113  
M.B. 43/52-54

0207-15



City of Rancho Cucamonga  
Tax Rate Area  
15009

July 2004

Ptn. N.W.1/4, Sec. 9  
T.1S., R.7W.

Assessor's Map  
Book 0207 Page 15  
San Bernardino County

REVISED  
10/09/14 RM-MC