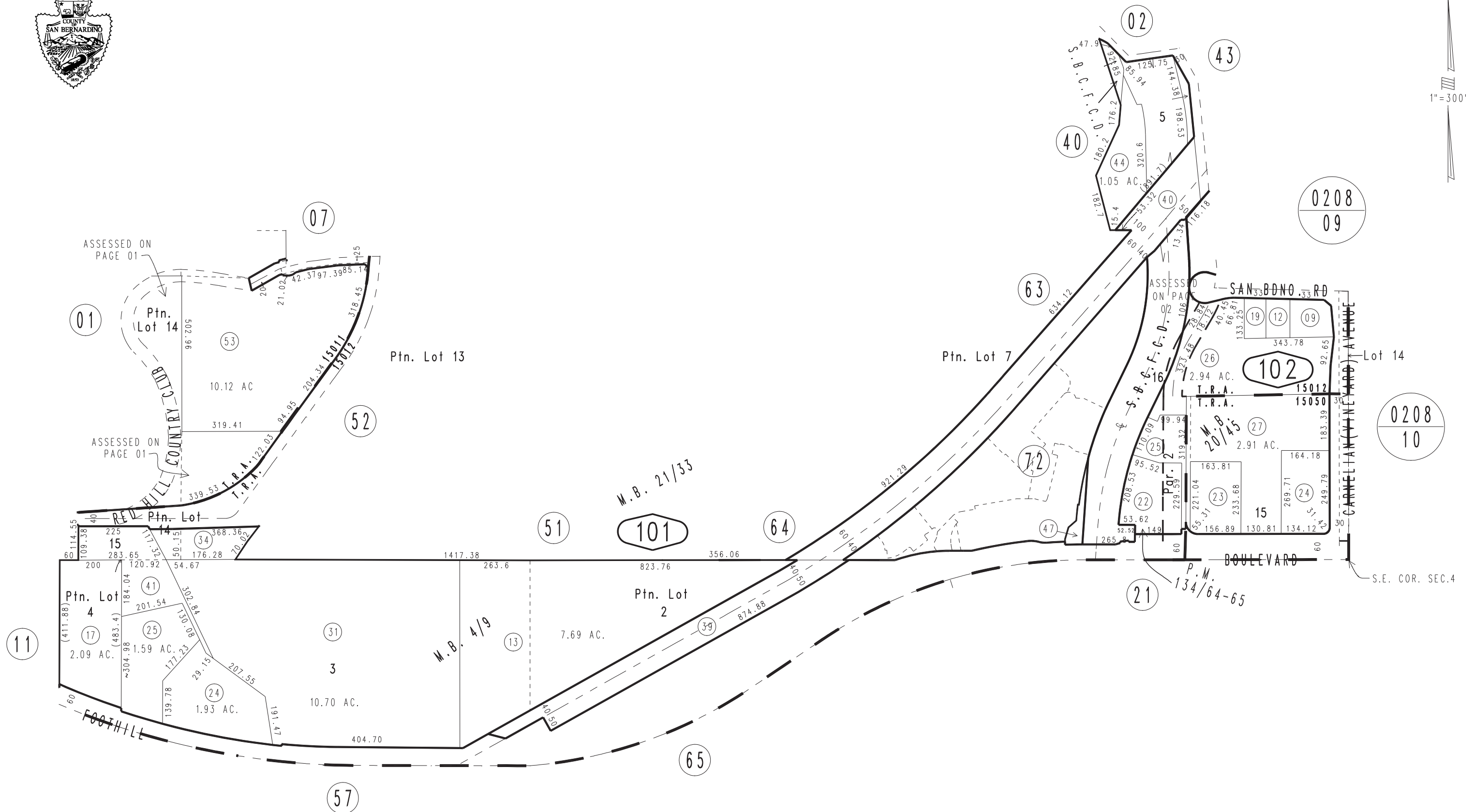
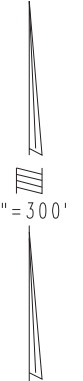


THIS MAP IS FOR THE PURPOSE OF AD VALOREM TAXATION ONLY.

Ptn. S.E.1/4, S.E.1/4 Sec.4, T.1S.,R.7W., S.B.B.&M.

City of Rancho Cucamonga 0207-10
Tax Rate Area
15011 15012 15050



July 2004

Ptn. Red Hill Sub., M.B. 21/33
Ptn. Cucamonga Vineyard Tract Sub."B", M.B. 20/45
Ptn. Cucamonga Fruit Lands, M.B. 4/9

Ptn. Parcel Map No. 10238, P.M. 134/64-65

Assessor's Map
Book 0207 Page 10
San Bernardino County

REVISED
10/10/19 KC