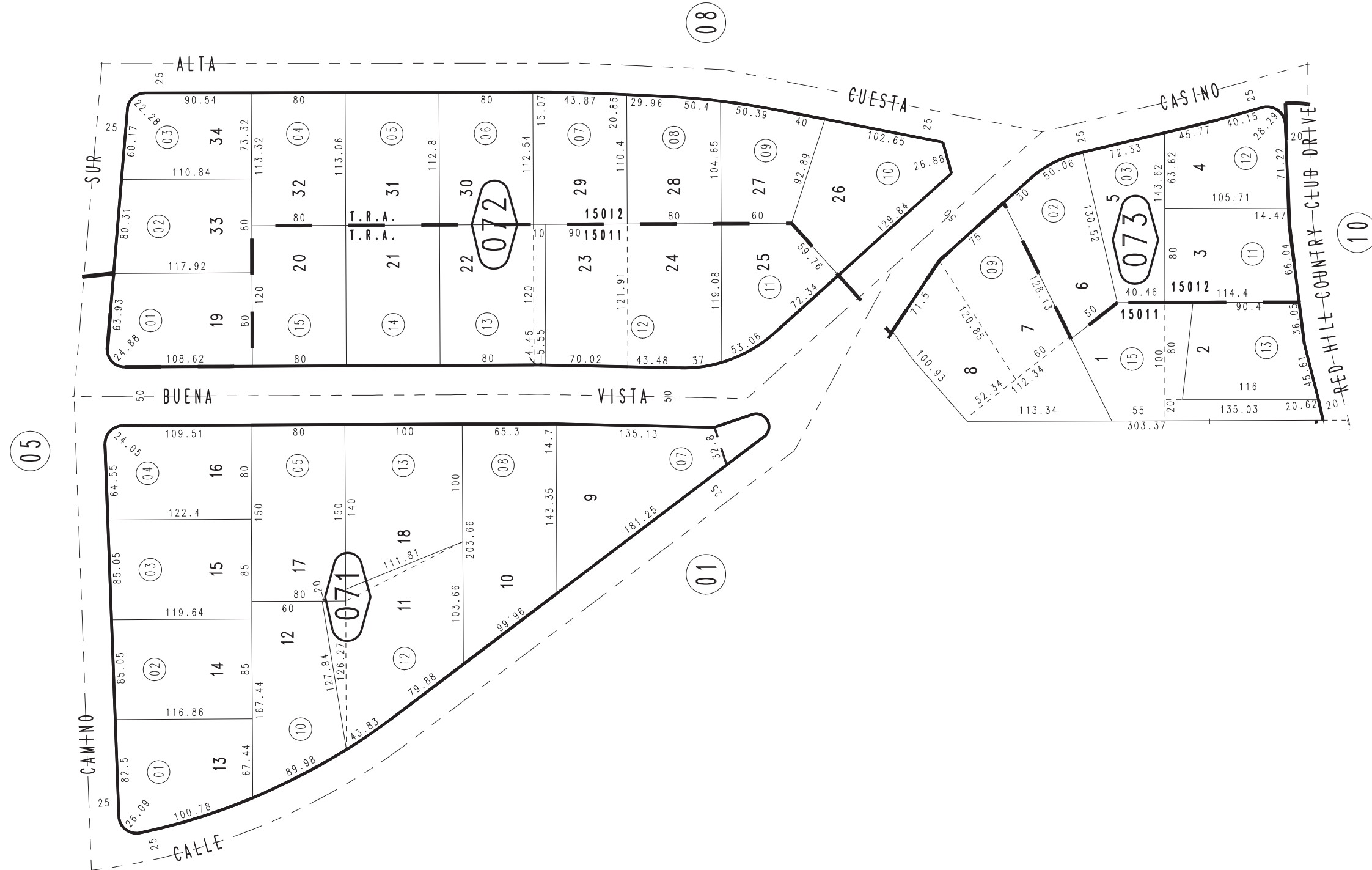
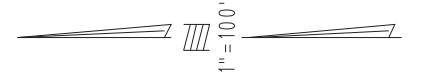


THIS MAP IS FOR THE PURPOSE OF AD VALOREM TAXATION ONLY.

Ptn. Tract No. 2386, M.B. 34/14-16

City of Rancho Cucamonga 0207-07
Tax Rate Area
15011, 15012



July 2004

Ptn. S.W.1/4, Sec. 4
T.1S., R.7W.

Assessor's Map
Book 0207 Page 07
San Bernardino County

REVISED
12/04/09 GW